

H A V A N A  
C R O S S I N G



STANLEY  
FURNITURE





## HAVANA CROSSING

---

DINING

7

BEDROOM

19

LIVING

49

MATERIALS & FINISHES

84

INDEX

88

The Malecón is a roadway, esplanade and seawall that runs five miles west from the mouth of Havana Harbor to the Vedado neighborhood.





Photo 1 (left to right): Victor Marin, Doc Ford's Cuba Expeditions, Lynn Wright, Director of Visual Display, Stanley Furniture | Photo 2 (left to right): Richard Ledger, George Jordan, President, The MT Company, Randy Wells, VP, Creative, Stanley Furniture, Denis Kissane, Furniture Designer, Stanley Furniture, Dr. Justin White, President, Doc Ford's Cuba

Expeditions | Photo 3: Rick Schroeder, VP, Design, Stanley Furniture | Photo 4: Maggie Aardema, Principal, Design Associates | Photo 5: Denis Kissane, Furniture Designer, Stanley Furniture | Photo 6 (left to right): Victor Avila, Doc Ford's Cuba Expeditions, Glenn Prillaman, President & CEO, Stanley Furniture.

## INTRODUCTION

Most people who grow up north of Miami-Dade County learn only the basics about Cuba and its tumultuous history. Yet, a mere ninety miles from Key West, across the Straits of Florida, lies an island nation — larger than all the other islands of the Caribbean combined — with a story that would seem inconceivable were it not true.

No book or photograph can prepare you for the enormity of what you see and feel upon arrival in Havana. The architecture, the landscape, the food, the music, the art and the people are all exceptional. To experience Havana and see, firsthand, remnants of what it was before the Cuban Revolution, what it is today, and to catch a glimpse of the gradual changes the entire country is undergoing is breathtaking, enchanting and, at the same time, haunting.

Thanks to the expertise of our guides, Dr. Justin White, Roberto Giraudy, Yovani Santana Guerrero, Victor Avila and Victor Marin, over the course of fifteen months and three trips our team experienced Havana from the vantage point of local experts with an eye on how five hundred years of history has shaped its culture, its aesthetic and its architecture.

*Havana Crossing™* is the product of our travels and our passion for distilling that experience into an eclectic yet well-edited wood residential furnishings collection that is both reflective of the Stanley Furniture design language and authentic to Cuba.

Randy Wells  
Vice President, Creative  
Stanley Furniture  
High Point, North Carolina





La Habana Vieja. One of the many vintage automobiles that inspired this collection's *Auto Mirror*.





## PIECES

A *Concordia Dining Table* in Colonial Mahogany 678-11-36

B *Lasa Side Chair* in Colonial Mahogany 678-11-60

C *Baró Host Chair* in Colonial Mahogany 678-11-75

D *Nuevo Vedado Buffet* in Colonial Mahogany 678-11-05

*Details pp.88, 89*





#### PIECES

A *Concordia Dining Table* in *Finca White* 678-21-36

B *Lasa Side Chair* in *Finca White* 678-21-60

C *Lasa Arm Chair* in *Finca White* 678-21-70

*Details pp. 88, 89*



## PIECES

A *La Rampa Dining Table* in *Finca White* with *Santiago Parchment Base* 678-21-30

B *Baró Host Chairs* in *Finca White* 678-21-75

*Details pp. 88, 89*





#### PIECES

A *La Rampa Dining Table* in Colonial Mahogany with Santiago Parchment Base 678-11-30

B *Lasa Arm Chair* in Colonial Mahogany 678-11-70

C *Promenade Sideboard* in Colonial Mahogany 678-11-06

*Details pp. 88, 89*



#### PIECES

A *Cadena Dining Table* in Malecón Stone 678-51-34

B *Lasa Arm Chair* in Finca White 678-21-70

C *Promenade Sideboard* in Finca White 678-21-06

*Details pp. 88, 89*





# PIECES

A *Lasa Counter Stool* in *Colonial Mahogany* 678-11-72

B *Lasa Barstool* in *Colonial Mahogany* 678-11-73

*Details p. 89*



# PIECES

A *Promenade Sideboard* in *Finca White* 678-21-06

B *Five Eleven Mirror* in *Murciélago Brass* 678-93-30

*Details pp. 89, 93*





BEDROOM

Balcony view from Paladar La Guarida, Centro Habana.





#### PIECES

A *Villa Virginia Bed, King* in Colonial Mahogany 678-13-45

B *Cadena Bedside Chest* in Masonic Red 678-33-13

C *Villa Virginia Dresser* in Colonial Mahogany 678-13-05

D *Ventana Mirror* in Colonial Mahogany 678-13-34

*Details pp. 90, 92, 93*





## PIECES

A *Villa Virginia Bed, King* in *Finca White* 678-23-45

B *Villa Virginia Nightstand* in *Finca White* 678-23-80

*Details pp. 91, 92*



The garden room at Casa de la Amistad.



#### PIECES

A Amistad Fretwork Bed, King in Finca White 678-23-55

Details p.92





## PIECES

A *Amistad Fretwork Bed, King in Colonial Mahogany* 678-13-55

B *Cojimar Bachelor's Chest in Colonial Mahogany* 678-13-16

C *Portico Lamp Table in Masonic Red* 678-35-09

*Details pp. 91, 92, 95*





Palacio del Segundo Cabo (Palace of the Second in Command), La Habana Vieja.





## PIECES

- A *Segundo Cabo Bed, King in Colonial Mahogany* 678-13-57
- B *Copa Colonial Nightstand in Colonial Mahogany* 678-13-82
- C *Copa Colonial Dresser in Colonial Mahogany* 678-13-06
- D *Ventana Mirror in Colonial Mahogany* 678-13-34

*Details pp. 90, 91, 92, 93*



## PIECES

- A *Segundo Cabo Upholstered Bed, King in Finca White* 678-23-47
- B *Copa Colonial Dresser in Finca White* 678-23-06
- C *Ventana Mirror in Finca White* 678-23-34
- D *Cadena Bedside Chest in Finca White* 678-23-13
- E *Five Eleven Mirror in Murciélagos Brass* 678-93-30

*Details pp. 90, 91, 92, 93*





# PIECES

A Copa Colonial Dresser in Finca White 678-23-06

B Ventana Mirror in Finca White 678-23-34

Details pp. 90, 93



# PIECES

A Villa Virginia Dresser in Finca White 678-23-05

B Ventana Mirror in Finca White 678-23-34

Details pp. 90, 93



**PIECES**

A *Villa Virginia Drawer Chest in Finca White* 678-23-10

*Details p. 90*



**PIECES**

A *Villa Virginia Nightstand in Finca White* 678-23-80

B *Villa Virginia Bed in Finca White* 678-23-45

*Details pp. 91, 92*





# PIECES

A Villa Virginia Dresser in Colonial Mahogany 678-13-05

B Ventana Mirror in Colonial Mahogany 678-13-34

Details pp. 90, 93



# PIECES

A Villa Virginia Media Chest in Colonial Mahogany 678-13-11

Details p. 90



The lobby promenade of the Hotel Havana Riviera.





# PIECES

A Cadena Bedside Chest in Finca White 678-23-13

Details p. 90



# PIECES

A Cadena Bedside Chest in Indigo Blue 678-43-13

Details p. 90





The fishing village of Cojimar, located eight miles east of Havana.





# PIECES

A Cojimar Bachelor's Chest in Indigo Blue 678-43-16

B Museum Mirror in Oro Oscuro Gold Leaf 678-83-33

Details pp. 91, 93



# PIECES

A Cojimar Bachelor's Chest in Finca White 678-23-16

Details p. 91



The Floridita, La Habana Vieja.





# PIECES

- A *Portico Console in Colonial Mahogany* 678-15-05
- B *Portico Cocktail Tables in Indigo Blue* 678-45-01
- C *Cadena Conversation Chairs in Colonial Mahogany* 678-15-75
- D *Portico Lamp Table in Indigo Blue* 678-45-09

Details pp. 94, 95, 96



## PIECES

A Lobby Lamp Table in Murciélago Brass 678-95-14

B Portico Cocktail Tables in Finca White 678-25-01

C Cadena Conversation Chairs in Finca White 678-25-75

Details pp. 94, 95, 96





# PIECES

- A *High Dive End Table in Colonial Mahogany* 678-15-10
- B *Portico Cocktail Table in Colonial Mahogany* 678-15-01
- C *Cadena Demilune Console in Indigo Blue* 678-45-07
- D *Portico Lamp Table in Colonial Mahogany* 678-15-09

Details pp. 94, 95





## PIECES

- A *High Dive End Table in Masonic Red* 678-35-10
- B *Cadena Conversation Chairs in Colonial Mahogany* 678-15-75
- C *Daiquiri Table in Murciélago Brass* 678-95-16
- D *Cadena Cocktail Table in Malecón Stone* 678-55-02
- E *Portico Console in Masonic Red* 678-35-05
- F *Portico Lamp Table in Colonial Mahogany* 678-15-09

*Details pp. 94, 95, 96*





## PIECES

A *Portico Cocktail Tables in Finca White* 678-25-01

*Details p. 94*



## PIECES

A *Cadena Cocktail Tables in Malecón Stone* 678-55-02

B *Balustrade Telephone Table in Finca White* 678-23-81

*Details pp. 91, 94*





Pharmacy Droguería Johnson, La Habana Vieja.



#### PIECES

A Portico Console in Finca White 678-25-05

Details p.94



Hotel Raquel, La Habana Vieja.



#### PIECES

A Portico Console in Indigo Blue 678-45-05

B Ventana Mirror in Oro Oscuro Gold Leaf 678-83-35

Details pp. 93, 94





#### PIECES

A Copa Colonial Media Console in Finca White 678-25-30

B Ventana Mirror in Oro Oscuro Gold Leaf 678-83-35

Details pp. 93, 96



#### PIECES

A Copa Colonial Media Console in Colonial Mahogany 678-15-30

B Ventana Mirror in Oro Oscuro Gold Leaf 678-83-35

Details pp. 93, 96



Poolside at the Hotel Havana Riviera.



#### PIECES

A High Dive End Table in Finca White 678-25-10

Details p. 95





Meyer Lansky chose Igor Boris Polevitzky, one of the founding fathers of Miami modern architecture, as the architect for the Hotel Havana Riviera.



# PIECES

A Lobby Lamp Table in Murciélago Brass 678-95-14

Details p. 95



# PIECES

A Balustrade Telephone Table in Finca White 678-23-81

Details p. 91





The Floridita is known as the cradle of the daiquiri.



# PIECES

A *Cadena Conversation Chair* in *Finca White* 678-25-75

B *Daiquiri Table* in *Murciélago Brass* 678-95-16

*Details p. 96*



# PIECES

A *La Cuna Bar Cart* in *Murciélago Brass* 678-95-08

*Details p. 95*





#### PIECES

A Correspondent's Writing Table in Colonial Mahogany 678-15-03

B Bonita Bucket Chair in Colonial Mahogany 678-15-65

Details pp. 94, 96



#### PIECES

A Correspondent's Writing Table in Finca White 678-25-03

B Bonita Bucket Chair in Finca White 678-25-65

C Promenade Bookcases in Finca White 678-25-18

Details pp. 94, 96



# PIECES

A Promenade Bookcases in Colonial Mahogany 678-15-18

Details p. 96



# PIECES

A Promenade Bookcases in Finca White 678-25-18

Details p. 96





## PIECES

A Correspondent's Entertainment Console in Colonial Mahogany 678-15-42

Details p. 96



## PIECES

A Correspondent's Entertainment Console in Finca White 678-25-42

Details p. 96

## MATERIALS & FINISHES

### FINISHES

#### *Colonial Mahogany*

Warm cocoa-brown finish over mahogany veneer that has been lightly hand-worn to mimic the patina of a cherished family heirloom.

#### *Finca White*

Inspired by the whitewashed painted furniture found in Cuba's coastal estates, this hand-worn, lightly distressed clean white painted finish ever so slightly reveals the grain of its mahogany veneer.

#### *Indigo Blue*

Warm mid-tone blue painted finish that is hand-worn, lightly distressed and reveals just enough of its grain pattern to convey its mahogany veneer.

#### *Masonic Red*

Deep jewel tone red painted finish that is hand-worn, lightly distressed and reveals just enough of its grain pattern to convey its mahogany veneer.

### MATERIALS

#### *Colonial Mahogany Raffia Insert*

Lightly distressed golden brown *Colonial Mahogany* finish over natural raffia.

#### *Finca White Raffia Insert*

Lightly distressed and chipped *Finca White* painted finish over natural raffia.

#### *Indigo Blue Raffia Insert*

Lightly distressed and chipped *Indigo Blue* painted finish over natural raffia.

#### *Oro Oscuro Gold Leaf*

Lightly distressed pale gold leaf finish.

#### *Santiago Parchment*

Natural low-sheen parchment with warm grey and taupe undertones.

#### *Malecón Cast Stone*

Finely textured limestone-colored cast stone.

#### *Murciélagos Brass*

Lustrous brass finish lightly aged to a beautiful patina that, with select pieces, has been debossed with an abstract pattern.

#### *Galeria Mirror*

Cool grey antiqued mirror glass.

### HARDWARE

#### *Trinidad Brass*

Named for the cobblestone streets of Trinidad, a city that is one of Cuba's UNESCO World Heritage sites, this dark brass finished hardware is accented by a waxy taupe hang-up in the relief of its stamped surfaces.

### FABRIC

#### *Vedado Grey*

A plush velvet-textured plain fabric in a soft, sandy grey hue.

#### *Varadero Salt*

A textured woven fabric in a relaxed softened white color.

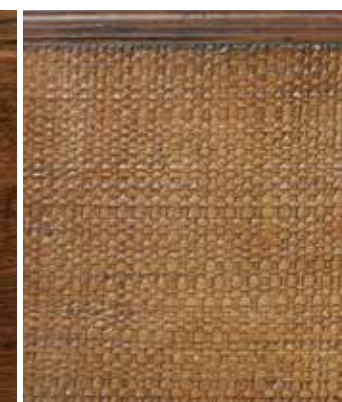
#### *Varadero Sand*

A textured woven fabric in a relaxed softened sand color.

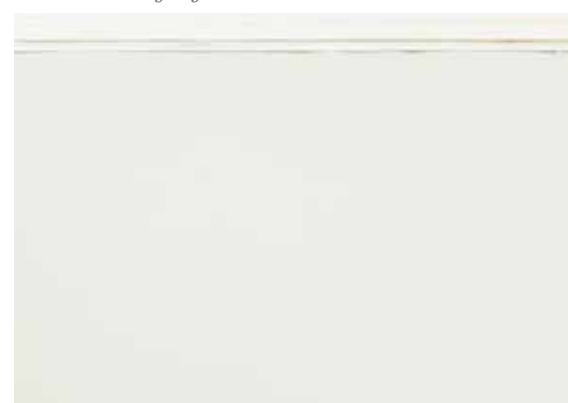
## MATERIALS & FINISHES



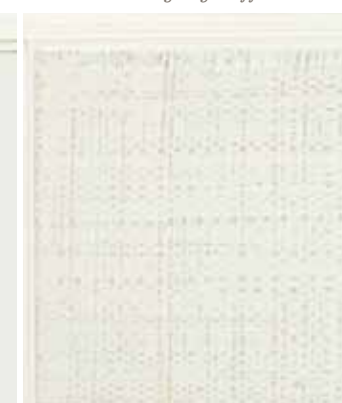
*Colonial Mahogany Finish*



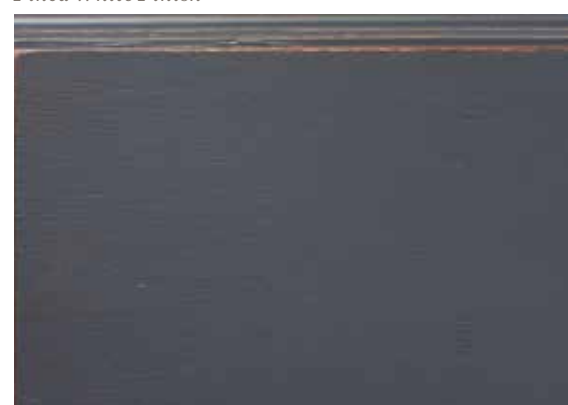
*Colonial Mahogany Raffia Insert*



*Finca White Finish*



*Finca White Raffia Insert*



*Indigo Blue Finish*



*Indigo Blue Raffia Insert*



## MATERIALS & FINISHES



*Masonic Red Finish*



*Oro Oscuro Gold Leaf Finish*



*Santiago Parchment*



*Malecón Cast Stone*



*Murciélagos Brass Finish*

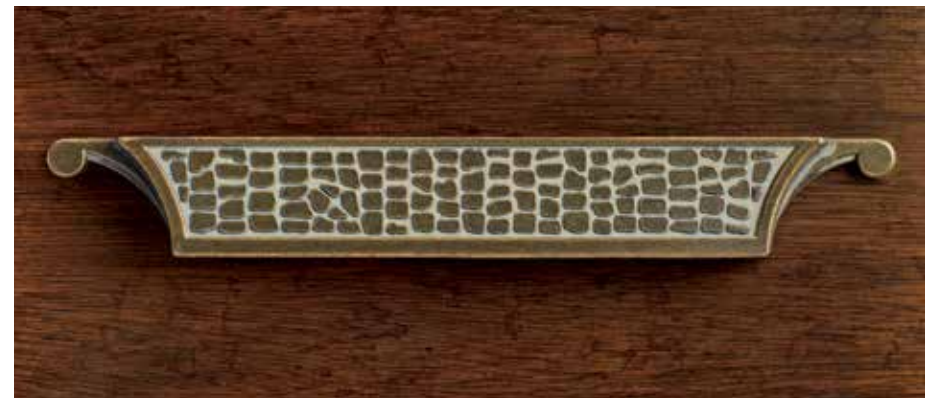


*Galeria Mirror*

## MATERIALS & FINISHES



*Trinidad Brass Hardware*



*Trinidad Brass Hardware*



*Vedado Grey Fabric*



*Varadero Salt Fabric*



*Varadero Sand Fabric*

## DINING



### LA RAMPA DINING TABLE

*Colonial Mahogany 678-11-30*  
*Finca White 678-21-30*

*Details: Santiago Parchment base only, one 23 1/2" (60 cm) leaf included, no additional leaves available*

*Overall without leaf:*  
 DIA 54" H 30" (137 X 76 CM)

*Overall with leaf:*  
 W 77 1/2" D 54" H 30" (197 X 137 X 76 CM)

*See pp. 12, 13, 14*



### CADENA DINING TABLE

*Malecón Stone 678-51-34*

*Details: Glass top with flat ogee edge, Malecón Cast Stone base*

*Overall:*  
 DIA 48" H 30" (122 X 76 CM)

*See p. 15*



### CONCORDIA DINING TABLE

*Colonial Mahogany 678-11-36*  
*Finca White 678-21-36*

*Details: Top available in Colonial Mahogany only, one 23 3/4" leaf included, no additional leaves available*

*Overall without leaf:*  
 W 85 3/4" D 41 1/4" H 30 1/16" (218 X 106 X 76 CM)

*Overall with leaf:*  
 W 109 1/2" D 41 3/4" H 30 1/16" (278 X 106 X 76 CM)

*See pp. 8, 9, 10, 11*



### NUEVO VEDADO BUFFET

*Colonial Mahogany 678-11-05*  
*Finca White 678-21-05*

*Details: Four adjustable shelves, electrical outlets on back, 1/2" overhang on the wall side of top, Trinidad Brass hardware, Finca White has raffia inserts on the doors*

*Overall:*  
 W 74 1/2" D 20" H 38 3/4" (189 X 51 X 98 CM)

*See p. 9*



### PROMENADE SIDEBORD

*Colonial Mahogany 678-11-06*  
*Finca White 678-21-06*

*Details: Two doors with two adjustable shelves behind each door, felt-lined drawers, soft close drawer guides, adjustable shelf between two center drawers, electrical outlets on back, 1/2" overhang on the wall side of top, Trinidad Brass hardware, Finca White has raffia inserts on the doors*

*Overall:*  
 W 65" D 19" H 36 1/2" (165 X 48 X 93 CM)

*See pp. 14, 15, 17*



### LASA SIDE CHAIR

*Colonial Mahogany 678-11-60*  
*Finca White 678-21-60*

*Fabric: Vedado Grey*

*Details: Upholstered seat*

*Overall:*  
 W 20" D 22 1/2" H 39" (51 X 57 X 99 CM)

*See pp. 8, 9, 10, 11*



### LASA ARM CHAIR

*Colonial Mahogany 678-11-70*  
*Finca White 678-21-70*

*Fabric: Vedado Grey*

*Details: Upholstered seat*

*Overall:*  
 W 25" D 22 1/2" H 39" (64 X 57 X 99 CM)

*See pp. 10, 11, 14, 15*



### LASA COUNTER STOOL

*Colonial Mahogany 678-11-72*  
*Finca White 678-21-72*

*Fabric: Vedado Grey*

*Details: Upholstered seat, Murciélagos Brass finish scuff plate*

*Overall:*  
 W 18" D 20 3/4" H 38" (46 X 53 X 97 CM)

*See p. 16*



### LASA BARSTOOL

*Colonial Mahogany 678-11-73*  
*Finca White 678-21-73*

*Fabric: Vedado Grey*

*Details: Upholstered seat, Murciélagos Brass finish scuff plate*

*Overall:*  
 W 18" D 20 3/4" H 44" (46 X 53 X 112 CM)

*See p. 16*



### BARÓ HOST CHAIR

*Colonial Mahogany 678-11-75*  
*Finca White 678-21-75*

*Fabric: Vedado Grey*

*Details: Upholstered seat*

*Overall:*  
 W 23" D 23 1/16" H 39" (58 X 60 X 99 CM)

*See pp. 8, 9, 12, 13*





## BEDROOM



### VILLA VIRGINIA DRESSER

Colonial Mahogany 678-13-05  
Finca White 678-23-05

*Details:* Eight drawers, cedar-lined bottom drawers, drop-front media drawer, drawer mounted wood coin valet, hidden drawer with jewelry tray, electrical outlet on back, 1/2" overhang on the wall side of top, soft close drawer guides, Trinidad Brass hardware

*Overall:*  
W 70" D 22" H 37 1/2" (178 X 56 X 95 CM)

See pp. 21, 35, 38



### COPA COLONIAL DRESSER

Colonial Mahogany 678-13-06  
Finca White 678-23-06

*Details:* Eight drawers, cedar-lined bottom drawers, drawer mounted wood coin valet, hidden drawer with jewelry tray, 1/2" overhang on the wall side of top, soft close drawer guides, Trinidad Brass hardware

*Overall:*  
W 70" D 21" H 36 1/8" (178 X 53 X 92 CM)

See pp. 31, 32, 34



### VILLA VIRGINIA DRAWER CHEST

Colonial Mahogany 678-13-10  
Finca White 678-23-10

*Details:* Five drawers, 1/2" overhang on the wall side of top, soft close drawer guides, Trinidad Brass hardware

*Overall:*  
W 44 1/2" D 22" H 54" (113 X 56 X 137 CM)

See p. 36



### VILLA VIRGINIA MEDIA CHEST

Colonial Mahogany 678-13-11  
Finca White 678-23-11

*Details:* Five drawers, one drop-front media drawer, electrical outlet on back, 1/2" overhang on the wall side of top, soft close drawer guides, Trinidad Brass hardware

*Overall:*  
W 52" D 22" H 40 3/8" (132 X 56 X 103 CM)

See p. 39

### CADENA BEDSIDE CHEST

Finca White 678-23-13  
Masonic Red 678-33-13  
Indigo Blue 678-43-13

*Details:* Three drawers, soft close drawer guides, finished back

*Overall:*  
W 27 1/8" D 18 1/2" H 29 3/4" (69 X 47 X 76 CM)

See pp. 20, 32, 33, 42, 43



### COJIMAR BACHELOR'S CHEST

Colonial Mahogany 678-13-16  
Finca White 678-23-16  
Indigo Blue 678-43-16

*Details:* Three drawers, soft close drawer guides, raffia on drawers painted to match, 1/2" overhang on the wall side of top, Trinidad Brass hardware

*Overall at top:*  
W 38 1/2" D 22" H 33 3/16" (98 X 56 X 84 CM)

*Overall at base:*  
W 48" D 22" H 33 3/16" (122 X 56 X 84 CM)

See pp. 46, 47



### VILLA VIRGINIA NIGHTSTAND

Colonial Mahogany 678-13-80  
Finca White 678-23-80

*Details:* Three drawers, 1/2" overhang on the wall side of top, soft close drawer guides, Trinidad Brass hardware

*Overall:*  
W 30" D 19" H 30 1/2" (76 X 48 X 77 CM)

See pp. 22, 37



### BALUSTRADE TELEPHONE TABLE

Colonial Mahogany 678-13-81  
Finca White 678-23-81  
Indigo Blue 678-43-81

*Details:* Three fixed shelves, one drawer, raffia end panels, 1/2" overhang on the wall side of top, finished on backside, Trinidad Brass hardware

*Overall:*  
W 21" D 17 1/2" H 29" (53 X 44 X 74 CM)

See pp. 65, 61, 73



### COPA COLONIAL NIGHTSTAND

Colonial Mahogany 678-13-82  
Finca White 678-23-82

*Details:* Three drawers, 1/2" overhang on the wall side of top, Trinidad Brass hardware

*Overall:*  
W 30" D 19" H 27 3/4" (76 X 48 X 70 CM)

See p. 30

## BEDROOM



### VILLA VIRGINIA BED

*Colonial Mahogany*

Queen 678-13-40 King 678-13-45  
Cal King 678-13-46

*Finca White*

Queen 678-23-40 King 678-23-45  
Cal King 678-23-46

*Fabric: Veradero Salt on Colonial Mahogany,  
Veradero Sand on Finca White*

*Overall:*

40 Queen W 69" H 58 1/2" L 88" (175 x 149 x 224 CM)  
45 King W 85" H 58 1/2" L 88" (216 x 149 x 224 CM)  
46 California King W 85" H 58 1/2" L 93"  
(216 x 149 x 236 CM)

*Bottom of side rail to floor:* 7 1/4 H

*See pp. 20, 21, 22, 23, 37*



### SEGUNDO CABO UPHOLSTERED BED

*Finca White*

Queen 678-23-42 King 678-23-47  
Cal King 678-23-48

*Fabric: Varadero Salt*

*Overall:*

42 Queen W 65 3/8" H 64" L 88" (166 x 163 x 224 CM)  
47 King W 81 3/8" H 67 3/4" L 88" (207 x 172 x 224 CM)  
48 California King W 81 3/8" H 67 3/4" L 93"  
(207 x 172 x 236 CM)

*Bottom of side rail to floor:* 6 1/4 H

*See pp. 32, 33*



### AMISTAD FRETWORK BED

*Colonial Mahogany*

Queen 678-13-50 King 678-13-55  
Cal King 678-13-56

*Finca White*

Queen 678-23-50 King 678-23-55  
Cal King 678-23-56

*Details: Raffia inserts*

*Overall:*

50 Queen W 64 7/8" H 60" L 88" (165 x 152 x 224 CM)  
55 King W 80 7/8" H 60" L 88" (205 x 152 x 224 CM)  
56 California King W 80 7/8" H 60" L 93" (205 x 152 x 236 CM)

*Bottom of side rail to floor:* 3 3/8 H

*See pp. 25, 26, 27*



### SEGUNDO CABO PANEL BED

*Colonial Mahogany*

Queen 678-13-52 King 678-13-57  
Cal King 678-13-58

*Details: Santiago Parchment on outside frame  
of headboard*

*Overall:*

52 Queen W 65 3/8" H 64" L 88" (166 x 163 x 224 CM)  
57 King W 81 3/8" H 67 3/4" L 88" (207 x 172 x 224 CM)  
58 California King W 81 3/8" H 67 3/4" L 93" (207 x 172 x 236 CM)

*Bottom of side rail to floor:* 6 1/4 H

*See pp. 30, 31*



### FIVE ELEVEN MIRROR

*Murciélagos Brass 678-93-30*

*Details: Beveled glass*

*Overall:*

W 30" D 1 1/2" H 39" (76 X 4 X 99 CM)

*See pp. 17, 31, 32, 33*



### AUTO MIRROR

*Murciélagos Brass 678-93-31*

*Details: Beveled glass*

*Overall:*

W 52" D 1 1/8" H 40" (132 X 3 X 102 CM)

*See p. 59*



### MUSEUM MIRROR

*Oro Oscuro Gold Leaf 678-83-33*

*Details: Beveled glass*

*Overall:*

W 34" D 5" H 48 3/16" (86 X 13 X 122 CM)

*See p. 46*



### VENTANA MIRROR

*Colonial Mahogany 678-13-34*

*Finca White 678-23-34*

*Oro Oscuro Gold Leaf 678-83-35*

*Details: Beveled glass*

*Overall:*

W 42" D 1 1/4" H 50" (107 X 3 X 127 CM)

*See pp. 21, 32, 34, 35, 38, 65, 66, 67*



## LIVING



### PORTICO COCKTAIL TABLE

Colonial Mahogany 678-15-01  
Finca White 678-25-01  
Indigo Blue 678-45-01

Details: Murciélago Brass finish plate inlay

Overall:  
W 54 3/4" D 30 1/6" H 17 3/4" (139 X 76 X 45 CM)

See pp. 50, 51, 52, 53, 54, 55, 58, 59



### PORTICO CONSOLE

Colonial Mahogany 678-15-05  
Finca White 678-25-05  
Masonic Red 678-35-05  
Indigo Blue 678-45-05

Details: One fixed shelf, 1/2" overhang on the wall side of top, Murciélago Brass finish plate inlay, finished on back side

Overall:  
W 80 3/8" D 14 1/4" H 33" (204 X 36 X 84 CM)

See pp. 50, 57, 63, 65



### CADENA COCKTAIL TABLE

Malecón Stone  
678-55-02

Details: Glass top with flat ogee edge, Malecón Cast Stone base

Overall:  
DIA 48" H 18" (122 X 46 CM)

See pp. 56, 57, 60, 61



### CORRESPONDENT'S WRITING TABLE

Colonial Mahogany 678-15-03  
Finca White 678-25-03

Details: One pencil, side guided drawer

Overall:  
W 68" D 30 3/4" H 29 3/4" (173 X 78 X 76 CM)

See pp. 78, 79



### CADENA DEMILUNE CONSOLE

Finca White 678-25-07  
Indigo Blue 678-45-07

Details: Two doors, one removable shelf, 1/2" overhang on the wall side of top

Overall:  
W 45 7/8" D 18 3/4" H 33 1/8" (117 X 48 X 84 CM)

See pp. 54, 55



### LA CUNA BAR CART

Murciélago Brass 678-95-08

Details: Galeria Mirror top and shelves, Murciélago Brass gallery rail

Overall:  
W 35 13/16" D 15 7/8" H 35 1/2" (91 X 40 X 90 CM)

See p. 77



### PORTICO LAMP TABLE

Colonial Mahogany 678-15-09  
Finca White 678-25-09  
Masonic Red 678-35-09  
Indigo Blue 678-45-09

Details: One pull-out shelf, one fixed shelf

Overall:  
DIA 26" H 27 1/8" (66 X 69 CM)

See pp. 27, 51, 55, 57



### HIGH DIVE END TABLE

Colonial Mahogany 678-15-10  
Finca White 678-25-10  
Masonic Red 678-35-10  
Indigo Blue 678-45-10

Overall: W 20" D 26" H 27" (51 X 66 X 69 CM)

See pp. 54, 56, 69



### LOBBY LAMP TABLE

Murciélago Brass 678-95-14

Details: Galeria Mirror tops

Overall:  
W 28 3/8" D 22 5/8" H 28" (73 X 57 X 71 CM)

See pp. 52, 72

## LIVING



### DAIQUIRI TABLE

Murciélago Brass 678-95-16

Details: Galería Mirror top, gallery rail

Overall: DIA 13" H 25" (33 X 64 CM)

See pp. 56, 76



### PROMENADE BOOKCASE

Colonial Mahogany 678-15-18

Finca White 678-25-18

Details: Murciélago Brass finish laser cut end panels, Colonial Mahogany & Finca White shelves, three fixed shelves, one removable shelf, Trinidad Brass hardware

Overall:

W 36 $\frac{1}{8}$ " D 14 $\frac{1}{8}$ " H 77" (92 X 36 X 196 CM)

See pp. 79, 80, 81



### COPA COLONIAL MEDIA CONSOLE

Colonial Mahogany 678-15-30

Finca White 678-25-30

Details: Three drawers with soft close drawer guides, six removable shelves, 1/2" overhang on the wall side of top, electrical outlet on back, Trinidad Brass hardware

Overall at top:

W 67 $\frac{1}{2}$ " D 19" H 33 $\frac{3}{16}$ " (171 X 48 X 84 CM)

Overall at base:

W 77" D 19" H 33 $\frac{3}{16}$ " (196 X 48 X 84 CM)

See pp. 66, 67



### CORRESPONDENT'S ENTERTAINMENT CONSOLE

Colonial Mahogany 678-15-42

Finca White 678-25-42

Details: Two drawers, two file drawers, five fixed shelves, 1/2" overhang on the wall side of top, Trinidad Brass hardware

Overall:

W 66" D 20" H 32" (168 X 51 X 81 CM)

See pp. 82, 83



### BONITA BUCKET CHAIR

Colonial Mahogany 678-15-65

Finca White 678-25-65

Fabric: Vedado Grey

Details: Upholstered seat and inside of back

Overall:

W 20" D 24 $\frac{1}{2}$ " H 35 $\frac{1}{2}$ " (51 X 62 X 90 CM)

See pp. 78, 79



### CADENA CONVERSATION CHAIR

Colonial Mahogany 678-15-75

Finca White 678-25-75

Fabric: Vedado Grey

Details: Upholstered seat and back

Overall:

W 26 $\frac{3}{4}$ " D 23 $\frac{3}{4}$ " H 31" (68 X 60 X 79 CM)

See pp. 51, 53, 56, 57, 76

Copyright ©2017 by Stanley Furniture Company

Many of the designs and design elements featured in our furniture are original, proprietary and exclusive to Stanley Furniture. In order to protect our customers and dealers, we will protect aggressively our rights in our designs using all available legal means, including copyright and other forms of intellectual property protection.

All rights reserved under International and Pan-American Copyright Conventions.

No part of this book may be reproduced in any form, electronic, mechanical or otherwise without permission in writing from Stanley Furniture.

Please note that Stanley Furniture is in no way connected to any of the properties, establishments, organizations or persons pictured or referenced herein, excepting Meyer Lansky, II, who is under an endorsement contract with Stanley Furniture for the *Havana Crossing*<sup>TM</sup> Collection.

Contact: [info@stanleyfurniture.com](mailto:info@stanleyfurniture.com)

First Edition 2017



200 NORTH HAMILTON STREET NO. 200 HIGH POINT, NC 27260

[stanleyfurniture.com](http://stanleyfurniture.com)





200 NORTH HAMILTON STREET NO. 200 HIGH POINT, NC 27260

*stanleyfurniture.com*