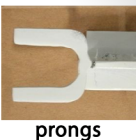
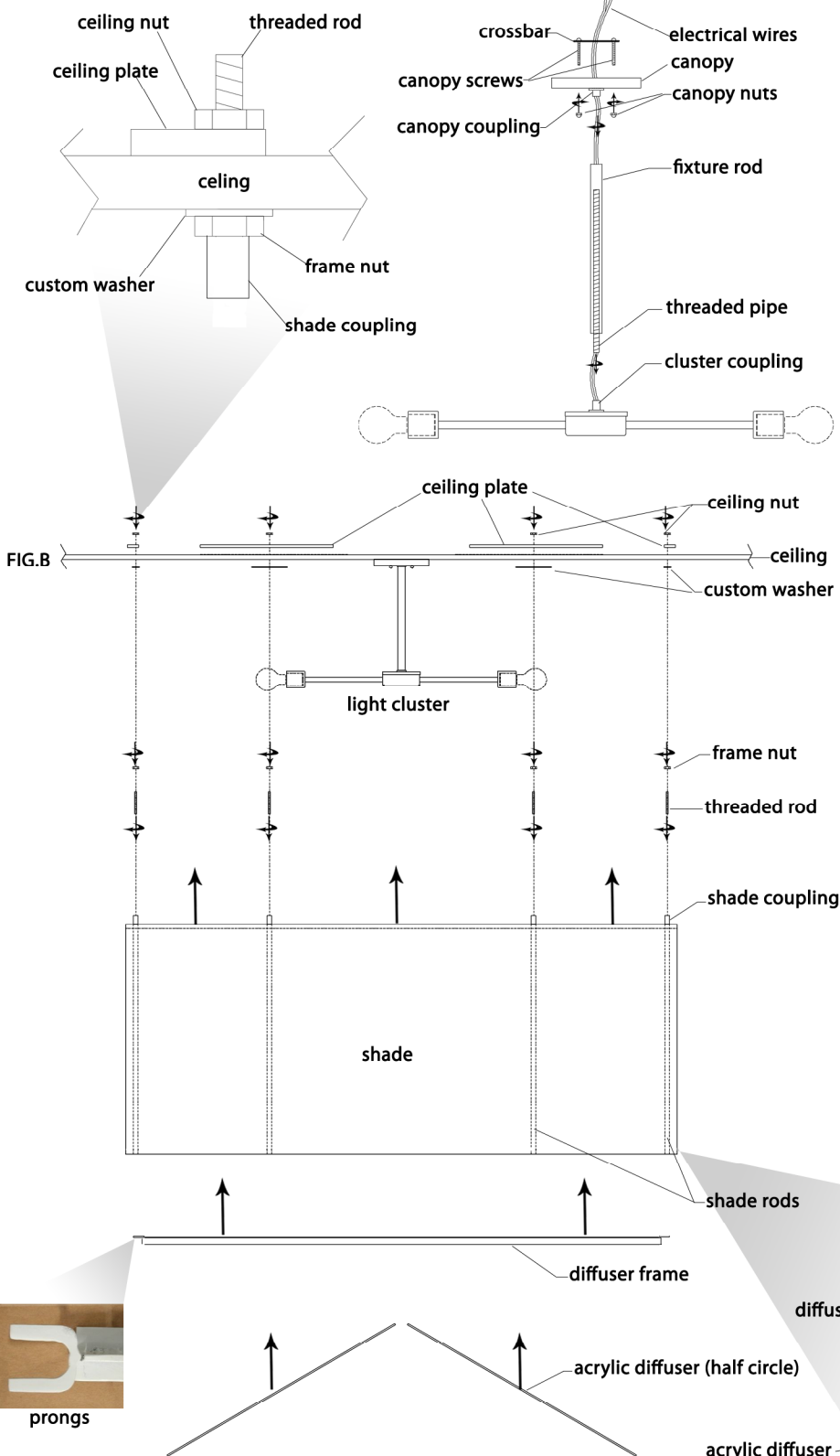
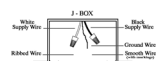


ASSEMBLY INSTRUCTIONS FOR #57425-4 (137347)

FIG. A



IMPORTANT

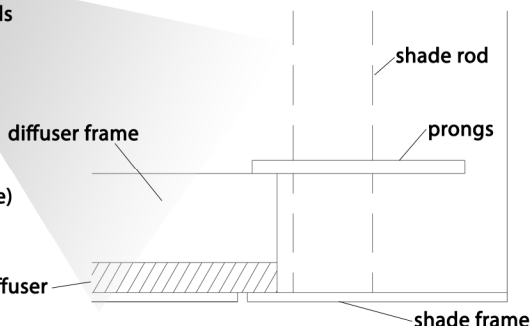
TURN OFF THE POWER AT THE MAIN FUSE OR CIRCUIT BREAKER BOX BEFORE STARTING INSTALLATION

CAREFULLY UNPACK AND IDENTIFY ALL PARTS BEFORE ASSEMBLY. BULBS ARE NOT INCLUDED

THIS IS A TWO PERSON JOB

DO NOT REMOVE THE PROTECTIVE CELOPHANE WRAPPING UNTIL FIXTURE IS INSTALLED

- 1.) Attach crossbar to j-box using customer provided screws.
- 2.) Screw threaded pipe onto cluster coupling.
- 3.) Place fixture rod over threaded pipe.
- 4.) Attach canopy to threaded pipe using the canopy coupling. FIG.A
- 5.) Raise canopy up to crossbar, wire as per local electrical code, and secure with canopy nuts.
- 6.) Screw threaded rods (6) into the shade couplings and secure with frame nuts.
- 7.) Hold shade up to ceiling with the light cluster in the center and mark where threaded rods will be attached.
- 8.) Place the ceiling plates above the ceiling where you have previously marked.
- 9.) Place the custom washers on the threaded rods.
- 10.) Have one person hold the shade up while the other secures the threaded rod to the ceiling plates with ceiling nuts. FIG.B
- 11.) Attach the diffuser frame to the bottom of the shade by using channel locks to crimp the prongs on the ends around the shade rods. (the diffuser frame and shades are marked to show which frame fits with which shade)
- 12.) Install light bulbs, then place acrylic diffusers on top of diffuser frame. (the diffusers are notched to fit around shade rods)
- 13.) Remove protective celophane wrapping.



"A Commitment to Excellence in Lighting and Service"

CALL OUR CUSTOMER SERVICE DEPARTMENT AT 1-800-222-4009

MONDAY - FRIDAY 8:00 a.m. - 6:00 p.m. ET

visit us on the web at www.meyda.com