

STRIPE SOFA

Design: Vincent Cantaert & Barbara Widiningtias



MS38 STRIPE HOCKER

W	30.5"	78 cm	NW	13 lb	6 kg
D	29"	74 cm	GW	22 lb	10 kg
H	15"	38 cm	VOL	0.27 m ³	
			PU	1 / box	
			COM	1.5 ly	

MS3 STRIPE SOFA 1-SEATER

W	30.5"	78 cm	NW	29 lb	13 kg
D	28.5"	73 cm	GW	40 lb	18 kg
H	28"	71 cm	VOL	0.43 m ³	
SH	15"	38 cm	PU	1 / box	
AH	25"	64 cm	COM	3 ly	

MGB504 Protective Cover STRIPE 1-Seater

FRAME

POWDER COATING COLORS

CATEGORY A - SAND

Matt (Gloss 15%) / Sand textured

Application : Aluminum



WHITE
F03



ANTHRACITE
F09



LIGHT
TAUPE
F34



TAUPE
F07



BLACK
F05

CATEGORY B - GLOSS

Gloss 55% / Smooth

Application : Aluminum



URBAN
WHITE
F35



INK BLACK
F04



BEIGE
F38

CATEGORY C - HIGH GLOSS

Gloss 85% / Smooth

Application : Aluminum



WHITE
HIGH GLOSS
F02

UPHOLSTERY

Twitchell

Textilene

Stripes



GREEN
BARCODE
S23



RED
BARCODE
S24



ORANGE
BARCODE
S21

CUSHION

SUNBRELLA

CATEGORY E - CANVAS

Application : Cushion



WHITE
C49



TAUPE
C50



COAL
C54



BLACK
C48



TEAK
C53



MINERAL
BLUE
C52



MACAW
C51

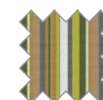
CATEGORY F - STRIPES



DOLCE
MANGO
C57



DOLCE
OASIS
C58

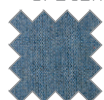


CAROUSEL
C56

CATEGORY G - SPECIALS



IBIZA
C59



HERITAGE
DENIM
C61



HERITAGE
PUMPKIN
C62



MINERAL
BLUE CHINE
C78

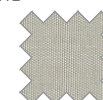
CATEGORY H - SAILCLOTHS



SAILOR
C70



SHADOW
C69



SEAGULL GREY
C60

MAMAGREEN

www.mamagreen.com