



*Karastan*<sup>®</sup>

THE RUGS OF KARASTAN





© Karastan

SAMOVAR®  
N° 900-901 PERSIAN VASE

*Karastan*  
RUGS

# SAMOVAR®

## 900-901 PERSIAN VASE

*Size shown: 8'8" x 12'*

*Sizes available: 2'10" x 5'8", 4'3" x 6', 5'9" x 9', 8'8" x 10', 8'8" x 12', and 10' x 14'*

This remarkable rug is adapted from a late 17th Century antique which belongs to the well known group of "Vase" carpets woven from the mid-16th through the 18th century in Central Persia. The term "Vase" is derived from the depiction of vase motifs in some examples from this group.

Our *Persian Vase* rug, with its distinct palmette and vinery trellis interspersed with lush flowering branches, incorporates two variants of design types known within the "Vase" group: namely the lattice carpet type and the shrub carpet type. In this particular carpet, these elements share equal importance in the overall design scheme, allowing one to experience the beauty of classical Persian weaving. The distinctive border design of cypress trees alternating with flowering plants can also be seen in antique carpet fragments in the Victoria and Albert Museum, London; and The Textile Museum, Washington, D.C.





© Karastan

SAMOVAR®  
N° 900-909 TABRIZ MEDALLION

---

*Karastan*  
RUGS

# SAMOVAR®

## 900-909 TABRIZ MEDALLION

*Size shown: 8'8" x 12'*

*Sizes available: 4'3" x 6', 5'9" x 9', 8'8" x 10', 8'8" x 12', and 10' x 14'*

Based on rugs found in the Persian region of Tabriz, this design is a wonderful example of Karastan artistry and craftsmanship. There is one type of design for which Tabriz should be given credit...the so-called medallion and corner design. This type of pattern was first used in the fifteenth century as a design for embossed leather book-covers and was adapted in the sixteenth century for rug weaving. It is still one of the nine most common and recognized types of Persian design. It has stood the test of centuries and has been copied by designers of every country the world over.

The Persians, with their passion for inventing variations on a central theme, have produced many forms of the both, or the famous Persian Pine pattern. The both shapes, found in the center medallion and corners of the field, are arranged in a graceful and flowing manner.



## SHAPURA™

For much of its history, 'Peshawar' - known in Ancient times as *Purushapura* - was one of the main trading centers on the ancient Silk Road and a major crossroads for various cultures between the Indian subcontinent and Central Asia.

In recent years, the name 'Peshawar' has become famous for a style of carpets that imbue a rustic, yet sophisticated elegance. Karastan has captured the essence of this free and easy style in the Shapura™ rug collection, by artfully combining colorations that are remarkably gentle - as though worn by the sands of time.

Rugs from the Shapura™ collection are woven in the U.S.A. of premium fully worsted New Zealand wool. Each of the yarn colors used in creation of these patterns have been individually skein dyed for superior clarity, woven through the back and luster-washed to create as closely as possible the look and feel of the magnificent hand knotted rugs that inspired them.

*Karastan*<sup>®</sup>  
RUGS



© Karastan

*SHAPURA™*  
*N° 535-16001 TIANA*

---

*Karastan*  
RUGS

SHAPURA™  
535-16001 TIANA

*Size shown: 5'9" x 9'*

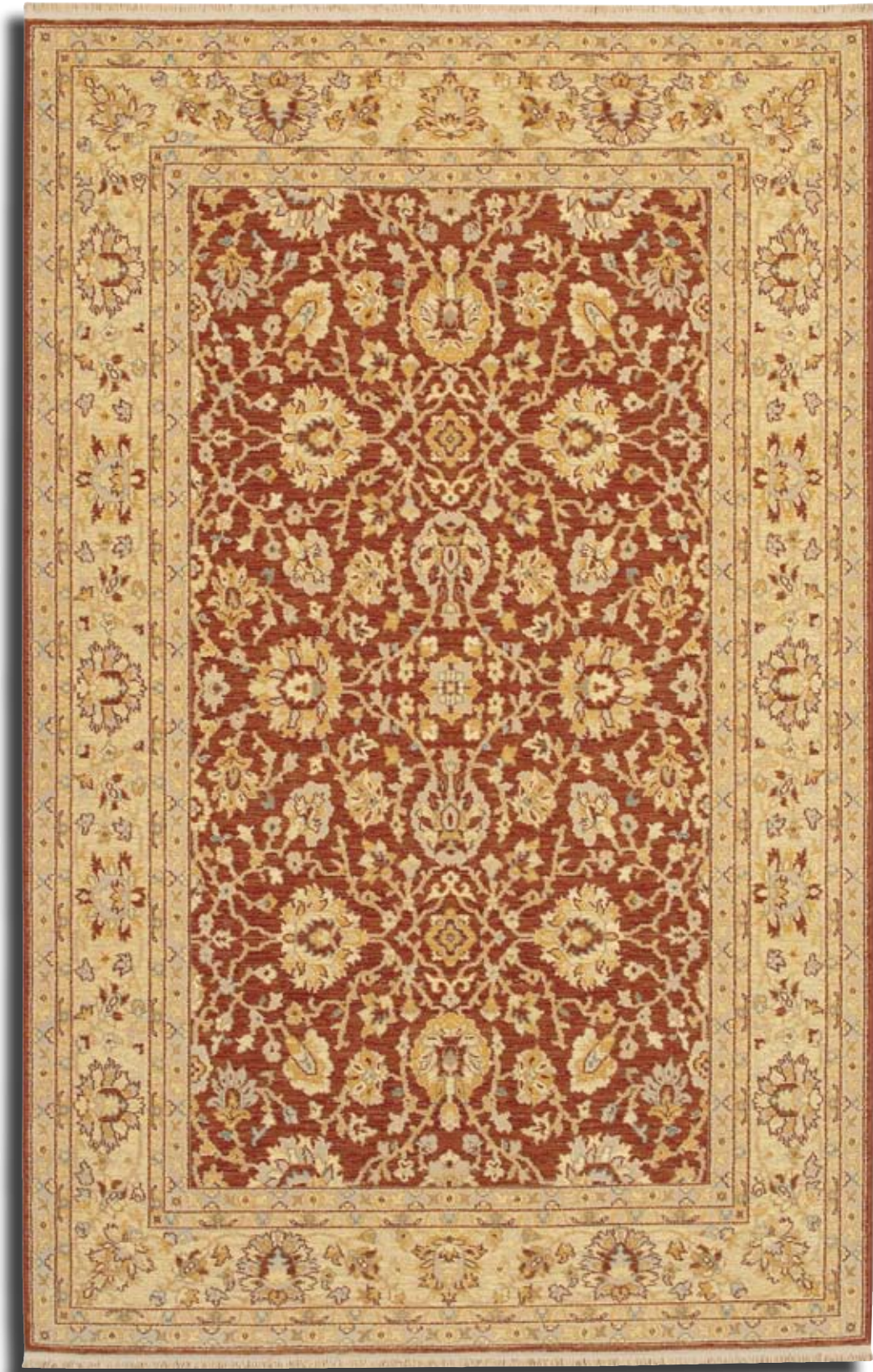
*Sizes Available: 5'9" x 9', 8'8" x 10', 8'8" x 12'*

A distinctive characteristic of all Shapura rugs is the masterful visual texture reminiscent of hand woven 'Peshawar' rugs. Karastan's designers have replicated this effect by using meticulously placed nuances of color. The patterns used are traditional, yet relaxed, in a palette of decorating friendly 'time-worn' hues perfectly geared towards today's interiors.

Our *Tiana* pattern features a bottle green ground, with subtle accents of brick red, deep greens and maize in perfect harmony with this lush composition. The flowing floral vine design provides easy to live with, understated elegance.

Rugs from the Shapura collection are woven in the U.S.A. of premium fully worsted New Zealand wool and represent the standard of excellence in wool rugs. This pattern has been crafted using dozens of individually skein dyed yarns for precise color clarity. The yarn is then woven through the back and finished with Karastan's Lustre-Wash™ process to re-create as closely as possible the look and feel of a fine hand-woven rug.





© Karastan

SHAPURA™  
N° 535-16002 ATHENA

---

*Karastan*  
RUGS

# SHAPURA™

## 535-16002 ATHENA

*Size shown: 5'9" x 9'*

*Sizes Available: 5'9" x 9', 8'8" x 10', 8'8" x 12'*

A distinctive characteristic of all Shapura rugs is the masterful visual texture reminiscent of hand woven 'Peshawar' rugs. Karastan's designers have replicated this effect by using meticulously placed nuances of color. The patterns used are traditional, yet relaxed, in a palette of decorating friendly 'time-worn' hues perfectly geared towards today's interiors.

Our *Athena* pattern features a weathered brick red ground with subtle accents of maize, moss and soft blue. This variation on an Agra carpet design exudes sophistication, while at the same time providing easy to live with, understated elegance.

Rugs from the Shapura collection are woven in the U.S.A. of premium fully worsted New Zealand wool and represent the standard of excellence in wool rugs. This pattern has been crafted using dozens of individually skein dyed yarns for precise color clarity. The yarn is then woven through the back and finished with Karastan's Lustre-Wash™ process to re-create as closely as possible the look and feel of a fine hand-woven rug.





© Karastan

SHAPURA™  
N° 535-16004 TIANA - GLACIER BLUE

---

*Karastan*  
RUGS

SHAPURA™  
535-16004 TIANA - GLACIER BLUE

*Size shown: 5'9" x 9'*

*Sizes Available: 5'9" x 9', 8'8" x 10', 8'8" x 12'*

A distinctive characteristic of all Shapura rugs is the masterful visual texture reminiscent of hand woven 'Peshawar' rugs. Karastan's designers have replicated this effect by using meticulously placed nuances of color. The patterns used are traditional, yet relaxed, in a palette of decorating friendly 'time-worn' hues perfectly geared towards today's interiors.

The field of our *Tiana - Glacier Blue* pattern features a mélange of watery blues, while subtle accents of amber, maize, mocha, and brick red are in perfect harmony with this lush composition. The flowing floral vine design provides easy to live with, understated elegance.

Rugs from the Shapura collection are woven in the U.S.A. of premium fully worsted New Zealand wool and represent the standard of excellence in wool rugs. This pattern has been crafted using dozens of individually skein dyed yarns for precise color clarity. The yarn is then woven through the back and finished with Karastan's Lustre-Wash™ process to re-create as closely as possible the look and feel of a fine hand-woven rug.





© Karastan

*SHAPURA™*  
*N° 535-16005 MANDARA*

---

*Karastan*  
RUGS

SHAPURA™  
535-16005 MANDARA

*Size shown: 5'9" x 9'*

*Sizes Available: 5'9" x 9', 8'8" x 10', 8'8" x 12'*

A distinctive characteristic of the Shapura collection is the visual texture reminiscent of hand woven 'Peshawar' rugs. Karastan's master designers have replicated this effect by using meticulously placed nuances of color. The patterns used are traditional, yet relaxed, in palette of decorating friendly 'time-worn' hues perfectly geared towards today's interiors.

Our *Mandara* pattern is a beautifully balanced classic design of palmettes and vines. The pattern motifs in limestone and subtle neutrals are softly contrasted with the "putty" field giving this traditional design a remarkably transitional flavor. This flowing design provides easy to live with, understated elegance.

Rugs from the Shapura collection are woven in the U.S.A. of premium fully worsted New Zealand wool and represent the standard of excellence in wool rugs. This pattern has been crafted using dozens of individually skein dyed yarns for precise color clarity. The yarn is then woven through the back and finished with Karastan's Lustre-Wash™ process to re-create as closely as possible the look and feel of a fine hand-woven rug.





© Karastan

*SHAPURA™*  
*Nº 535-16006 BEL CANTO*

---

*Karastan*  
RUGS

SHAPURA™  
535-16006 BEL CANTO

*Size shown: 5'9" x 9'*

*Sizes Available: 5'9" x 9', 8'8" x 10', 8'8" x 12'*

A distinctive characteristic of all Shapura rugs is the masterful visual texture reminiscent of hand woven 'Peshawar' rugs. Karastan's designers have replicated this effect by using meticulously placed nuances of color. The patterns used are traditional, yet relaxed, in a palette of decorating friendly 'time-worn' hues perfectly geared towards today's interiors.

An elegant color palette combines with classic Persian motifs to create a fresh and unusual combination that underscores carpet design as fine art. An exquisite composition of branches, leaves and stylized floral motifs are combined to create a delightful garden. The softly striated ground adds visual texture while the intentional omission of an elaborate border lends *Bel Canto* a modern and casual air.

Rugs from the Shapura collection are woven in the U.S.A. of premium fully worsted New Zealand wool and represent the standard of excellence in wool rugs. This pattern has been crafted using dozens of individually skein dyed yarns for precise color clarity. The yarn is then woven through the back and finished with Karastan's Lustre-Wash™ process to re-create as closely as possible the look and feel of a fine hand-woven rug.

*Bel Canto* coordinates beautifully with *Cantilena* from the Shapura collection.





© Karastan

SHAPURA™  
N° 535-16007 CANTILENA

---

*Karastan*  
RUGS

# SHAPURA™

## 535-16007 CANTILENA

*Size shown: 5'9" x 9'*

*Sizes Available: 5'9" x 9', 8'8" x 10', 8'8" x 12'*

A distinctive characteristic of all Shapura rugs is the masterful visual texture reminiscent of hand woven 'Peshawar' rugs. Karastan's designers have replicated this effect by using meticulously placed nuances of color. The patterns used are traditional, yet relaxed, in a palette of decorating friendly 'time-worn' hues perfectly geared towards today's interiors.

Nuanced colors of robin's egg, ivory and taupe are employed to create a soft time worn appearance in this beautifully updated Persian style rug. Golden tan, brick and sage accents deliver just enough color to make *Cantilena* a show-piece in any space. Large palmettes and an open airy field lend a casual and fresh ambiance.

Rugs from the Shapura collection are woven in the U.S.A. of premium fully worsted New Zealand wool and represent the standard of excellence in wool rugs. This pattern has been crafted using dozens of individually skein dyed yarns for precise color clarity. The yarn is then woven through the back and finished with Karastan's Lustre-Wash™ process to re-create as closely as possible the look and feel of a fine hand-woven rug.

*Cantilena* coordinates beautifully with *Bel Canto* from the Shapura collection.







© Karastan

*ICONOCLAST™*  
*N° 575-17001 PAVILION*

---

*Karastan*  
RUGS

# ICONOCLAST™

## 575-17001 PAVILION

*Size shown: 5'9" x 9'*

*Sizes Available: 5'9" x 9', 8'8" x 10', 8'8" x 12'*

Floating and overlapping medallions create a kaleidoscope of visual interest in tones of grey, ivory, gold and copper. *Pavilion* is a casual, modern design that offers an updated decorating solution in a brand people trust.

Rugs from the Iconoclast™ collection are woven in the U.S.A. of premium fully worsted New Zealand wool and represent the standard of excellence in wool rugs. This pattern has been crafted using dozens of individually skein dyed yarns for precise color clarity. The yarn is then woven through the back and finished with Karastan's Lustre-Wash™ process to re-create as closely as possible the look and feel of a fine hand-woven rug.





© Karastan

*ICONOCLAST™*  
*N° 575-17003 VERVE*

---

*Karastan*  
RUGS

# ICONOCLAST™

575-17003 VERVE

*Size shown: 8'8" x 12'*

*Sizes Available: 5'9" x 9', 8'8" x 10', 8'8" x 12'*

Interlocking ellipses in livable shades of robin's egg with an ombre background that transitions from camel to ivory and back again create a casual, modern design that offers an updated decorating solution in a brand people trust.

Rugs from the Iconoclast™ collection are woven in the U.S.A. of premium fully worsted New Zealand wool and represent the standard of excellence in wool rugs. This pattern has been crafted using dozens of individually skein dyed yarns for precise color clarity. The yarn is then woven through the back and finished with Karastan's Lustre-Wash™ process to re-create as closely as possible the look and feel of a fine hand-woven rug.





© Karastan

ICONOCLAST™  
N° 575-17004 PAVILION TWILIGHT

---

*Karastan*  
RUGS

# ICONOCLAST™

575-17004 PAVILION TWILIGHT

*Size shown: 8'8" x 12'*

*Sizes Available: 5'9" x 9', 8'8" x 10', 8'8" x 12'*

Floating and overlapping medallions create a kaleidoscope of visual interest in updated jewel tones. *Pavilion Twilight* is a casual, modern design that offers an updated decorating solution in a brand people trust.

Rugs from the Iconoclast™ collection are woven in the U.S.A. of premium fully worsted New Zealand wool and represent the standard of excellence in wool rugs. This pattern has been crafted using dozens of individually skein dyed yarns for precise color clarity. The yarn is then woven through the back and finished with Karastan's Lustre-Wash™ process to re-create as closely as possible the look and feel of a fine hand-woven rug.



## ANTIQUÉ LEGENDS™

The first Persian carpets were woven by hand almost 2,500 years ago. They were magnificent - and often as fragile as they were beautiful. Then in 1928, Karastan became the first to introduce a custom loom designed to weave through the back, capturing the richness and complexity of a hand-knotted Oriental rug. To reflect not just the intricacy of design, but the subtle nuances of color, gentled with age. Using only the finest materials, including ultra soft worsted New Zealand wool, each rug in our Antique Legends™ collection relies on the expertise of dozens of craftspeople to create inch by inch both timelessness and beauty. As a final touch, the rugs are enhanced with Karastan's Lustre-Wash™ as well as a special 'antique' wash to harmonize the colors with a rich 'vintage' patina.

*Karastan*  
RUGS



© Karastan

ANTIQUE LEGENDS™  
N° 2200-201 AGRA BLACK

---

*Karastan*  
RUGS

# ANTIQUÉ LEGENDS™

## 2200-201 AGRA BLACK

*Size shown: 5'9" x 9'*

*Sizes Available: 4'3" x 6', 5'9" x 9', 8'8" x 10', and 8'8" x 12'*

'Antique Legends' is a breathtaking collection of Axminster rugs with a 'vintage' finish. Styling is based on some of Karastan's...and the world's...most legendary antique carpet designs, yet the interpretation is fresh; and the colors are perfect for today's eclectic interiors. Karastan designers, utilizing multiple shades of a color within the design motifs, painstakingly recreate the 'abrash' or stria effect often found in aged vegetal dyes. After weaving, 'Antique Legends' rugs are given a special antique wash to further harmonize the colors with a rich 'vintage' patina.

Karastan's first Agra design appeared in 1928, inspired by the rich culture of India and the looms of ancient weavers. Our 21st century interpretation *Agra Black* is an updated, easy to work with pattern featuring large scale leaf and palmette motifs with color emphasis on organic greens, vintage golds, soft browns, terra cotta, coral and ocean blue.

Woven in the U.S.A. in a luxuriously soft construction of premium worsted New Zealand wool.





© Karastan

ANTIQUÉ LEGENDS™  
N° 2200-202 BAKHTIYARI

---

*Karastan*  
RUGS

# ANTIQUÉ LEGENDS™

## 2200-202 BAKHTIYARI

*Size shown: 5'9" x 9'*

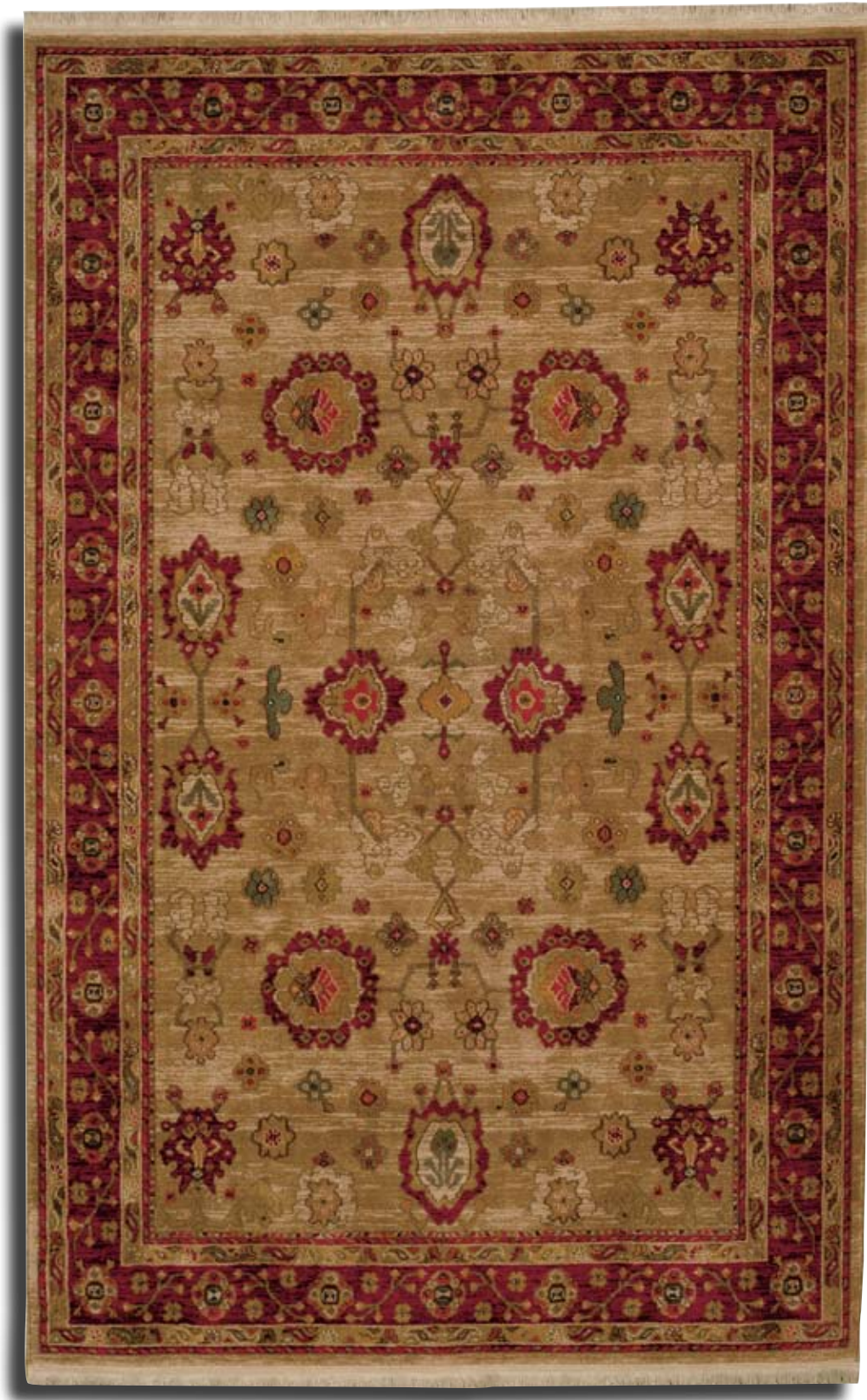
*Sizes Available: 5'9" x 9', 8'8" x 10', and 8'8" x 12'*

'Antique Legends' is a breathtaking collection of Axminster rugs with a 'vintage' finish. Styling is based on some of Karastan's...and the world's...most legendary antique carpet designs; yet the interpretation is fresh and the colors are perfect for today's eclectic interiors. Karastan designers, utilizing multiple shades of a color within the design motifs, painstakingly recreate the 'abrash' or stria effect often found in aged vegetal dyes. After weaving, 'Antique Legends' rugs are given a special antique wash to further harmonize the colors with a rich 'vintage' patina.

Bakhtiyari village weaving dates back to the 19th century. The intricacy of the pattern details are mesmerizing, with small rectangular compartments covering the whole center of the rug, each filled with stylized floral motifs. Often, these are combined with 'niche' and 'tree of life' motifs frequently found in prayer rugs. Our Antique Legends 'Bakhtiyari' pattern is a 21st century composition, with inspiration from our pattern #745 *Bakhtiyari* first introduced in 1984.

Woven in the U.S.A. in a luxuriously soft construction of premium worsted New Zealand wool.





© Karastan

ANTIQUÉ LEGENDS™  
N° 2200-203 OUSHAK

---

*Karastan*  
RUGS

# ANTIQUÉ LEGENDS™

## 2200-203 OUSHAK

*Size shown: 5'9" x 9'*

*Sizes Available: 4'3" x 6', 5'9" x 9', 8'8" x 10', 8'8" x 12' and 10' x 14'*

'Antique Legends' is a breathtaking collection of Axminster rugs with a 'vintage' finish. Styling is based on some of Karastan's...and the worlds...most legendary antique carpet designs, yet the interpretation is fresh and the colors are perfect for today's eclectic interiors. Karastan designers, utilizing multiple shades of a color within the design motifs, painstakingly recreate the abrash or stria effect often found in aged vegetable dyes. After weaving, 'Antique Legends' rugs are given a special antique wash to further harmonize the colors with a rich vintage patina.

The weaving traditions of Oushak date back hundreds of years. In the late 19th and early 20th century Oushak became known as one of the greatest rug making towns of Asia Minor as railroad connections with the Mediterranean seaboard facilitated extensive trade with the European market. Patterns favored by the West were open and spacious lending an air of relaxed elegance. Our striking *Oushak* pattern was inspired by an early 20th century carpet woven in western Turkey and features an enlarged palmette trellis field design surrounded by a rosette border.

Our *Oushak* pattern has been specifically designed to coordinate with Antique Legends pattern 2200-202 *Bakhtiyari* and is equally compatible with our Samovar pattern 900-901 *Persian Vase*.

Woven in the U.S.A. in a luxuriously soft construction of premium worsted New Zealand wool.





© Karastan

ANTIQUE LEGENDS™  
N° 2200-204 EMPEROR'S HUNT

---

*Karastan*  
RUGS

# ANTIQUÉ LEGENDS™

## 2200-204 EMPEROR'S HUNT

*Size shown: 5'9" x 9'*

*Sizes Available: 5'9" x 9', 8'8" x 10', 8'8" x 12' and 10' x 14'*

'Antique Legends' is a breathtaking collection of Axminster rugs with a 'vintage' finish. Styling is based on some of Karastan's...and the worlds...most legendary antique carpet designs, yet the interpretation is fresh and the colors are perfect for today's eclectic interiors. Karastan designers, utilizing multiple shades of a color within the design motifs, painstakingly recreate the abash or stria effect often found in aged vegetable dyes. After weaving, 'Antique Legends' rugs are given a special antique wash to further harmonize the colors with a rich vintage patina.

The weaving traditions of Oushak date back hundreds of years. In the late 19th and early 20th century Oushak became known as one of the greatest rug making towns of Asia Minor as railroad connections with the Mediterranean seaboard facilitated extensive trade with the European market. Patterns favored by the West were open and spacious lending an air of relaxed elegance. Our striking *Oushak* pattern was inspired by an early 20th century carpet woven in western Turkey and features an enlarged palmette trellis field design surrounded by a rosette border.

Our *Oushak* pattern has been specifically designed to coordinate with Antique Legends pattern 2200-202 *Bakhtiyari* and is equally compatible with our Samovar pattern 900-901 *Persian Vase*.

Woven in the U.S.A. in a luxuriously soft construction of premium worsted New Zealand wool.





© Karastan

ANTIQUÉ LEGENDS™  
N° 2200-205 ROYAL TABRIZ

---

*Karastan*  
RUGS

# ANTIQUÉ LEGENDS™

## 2200-205 ROYAL TABRIZ

*Size shown: 5'9" x 9'*

*Sizes Available: 5'9" x 9', 8'8" x 10', 8'8" x 12' and 10' x 14'*

'Antique Legends' is a breathtaking collection of Axminster rugs with a 'vintage' finish. Styling is based on some of Karastan's...and the worlds...most legendary antique carpet designs, yet the interpretation is fresh and the colors are perfect for today's eclectic interiors. Karastan designers, utilizing multiple shades of a color within the design motifs, painstakingly recreate the 'abrash' or stria effect often found in aged vegetal dyes. After weaving, 'Antique Legends' rugs are given a special antique wash to further harmonize the colors with a rich 'vintage' patina.

The medallion and corner pattern depicted in this richly colored rug is one of the most classic Persian designs and has been reproduced with many variations throughout the rug-weaving world. Some scholars attribute the origin of the pattern to the fifteenth century – as a design for embossed leather book covers – adapted in the sixteenth century for rug weaving. Our elegant interpretation is densely populated with botanical motifs throughout both field and border.

Our *Royal Tabriz* pattern has been specifically designed to coordinate with patterns *2200-203 Oushak*, *2200-202 Bakhtiyari*, and *2200-204 Emperor's Hunt*.

Woven in the U.S.A. in a luxuriously soft construction of premium worsted New Zealand wool.





© Karastan

*ANTIQUE LEGENDS™*  
*N° 2200-206 VILLA VENETO*

---

*Karastan*  
RUGS

# ANTIQUÉ LEGENDS™

## 2200-206 VILLA VENETO

*Size shown: 5'9" x 9'*

*Sizes Available: 5'9" x 9', 8'8" x 10', 8'8" x 12' and 10' x 14'*

'Antique Legends' is a breathtaking collection of Axminster rugs with a 'vintage' finish. Styling is based on some of Karastan's...and the worlds...most legendary antique carpet designs, yet the interpretation is fresh and the colors are perfect for today's eclectic interiors. Karastan designers, utilizing multiple shades of a color within the design motifs, painstakingly recreate the 'abrash' or stria effect often found in aged vegetal dyes. After weaving, 'Antique Legends' rugs are given a special antique wash to further harmonize the colors with a rich 'vintage' patina.

Inspired by a hand knotted Sultanabad design, our *Villa Veneto* pattern provides the ultimate statement in relaxed luxury, while use of a subtle 'cross hatch' design effect introduces a new visual dimension to the Antique Legends collection. The look is 'aged' and 'weathered' – all done entirely with color. Inspired by the weathered walls of centuries old Italian villas, an elegant palette of terra cotta, amber, butterscotch, moss, and peacock blue complete the look.

Woven in the U.S.A. in a luxuriously soft construction of premium worsted New Zealand wool.





© Karastan

ANTIQUÉ LEGENDS™  
N° 2200-207 VILLA VENETO - IVORY

---

*Karastan*  
RUGS

# ANTIQUÉ LEGENDS™

## 2200-207 VILLA VENETO - IVORY

*Size shown: 5'9" x 9'*

*Sizes Available: 5'9" x 9', 8'8" x 10', 8'8" x 12' and 10' x 14'*

'Antique Legends' is a breathtaking collection of Axminster rugs with a 'vintage' finish. Styling is based on some of Karastan's...and the worlds...most legendary antique carpet designs, yet the interpretation is fresh and the colors are perfect for today's eclectic interiors. Karastan designers, utilizing multiple shades of a color within the design motifs, painstakingly recreate the 'abrash' or stria effect often found in aged vegetal dyes. After weaving, 'Antique Legends' rugs are given a special antique wash to further harmonize the colors with a rich 'vintage' patina.

The weathered walls of centuries-old Italian villas inspired the color palette in our *Villa Veneto – Ivory* pattern. A palette of terra cotta, ochre, moss and Peacock blues is combined in an elegant interpretation of a 'Sultanabad' design. *Villa Veneto - Ivory* provides the ultimate statement in relaxed luxury, while use of a subtle 'cross hatch' design effect adds visual dimension. The look is 'aged' and 'weathered' – with a soft neutral ground that provides a light and airy foundation to any room.

Our *Villa Veneto – Ivory* pattern has been specifically designed to coordinate with patterns *2200-206 Villa Veneto*, and *2200-208 Serapi*.

Woven in the U.S.A. in a luxuriously soft construction of premium worsted New Zealand wool.





© Karastan

ANTIQUÉ LEGENDS™  
N° 2200-208 SERAPI

---

*Karastan*  
RUGS

# ANTIQUÉ LEGENDS™

## 2200-208 SERAPI

*Size shown: 5'9" x 9'*

*Sizes Available: 5'9" x 9', 8'8" x 10', 8'8" x 12' and 10' x 14'*

'Antique Legends' is a breathtaking collection of Axminster rugs with a 'vintage' finish. Styling is based on some of Karastan's...and the worlds...most legendary antique carpet designs, yet the interpretation is fresh and the colors are perfect for today's eclectic interiors. Karastan designers, utilizing multiple shades of a color within the design motifs, painstakingly recreate the 'abrash' or stria effect often found in aged vegetal dyes. After weaving, 'Antique Legends' rugs are given a special antique wash to further harmonize the colors with a rich 'vintage' patina.

In our *Serapi* pattern a palette of terra cotta, amber, sage and olive green punctuated with Peacock blues is combined in an elegant interpretation of an antique carpet design - while use of a subtle 'cross hatch' design effect adds visual dimension. The look is 'aged' and 'weathered', understated and serene, providing the ultimate statement in relaxed luxury.

Our *Serapi* pattern has been specifically designed to coordinate with patterns 2200-206 *Villa Veneto*, and 2200-207 *Villa Veneto - Ivory*.

Woven in the U.S.A. in a luxuriously soft construction of premium worsted New Zealand wool.



## THE ORIGINAL KARASTAN™ COLLECTION

This collection established Karastan's reputation as the maker of the world's finest power-loomed Oriental-designed rugs. Patterns are carefully recreated from Persian, Turkoman and other handwoven Orientals, including prized museum pieces and antiques.

First introduced in 1928, the Original Karastan Collection™ has become the worldwide standard for power-loomed rugs. So sure are we of the lasting quality of these rugs, in fact, that we guarantee every one for a full 20 years from the original date of purchase.

We start with a dense luxurious pile of 100% premium imported worsted wool, the traditional fiber of fine Orientals, each color individually skein-dyed in the yarn for jewel-tone clarity.

Every rug in the Original Karastan Collection™ is woven on one of our Axminster looms, which, because of their similarity to hand looms, capture the luxury and beauty of the handwoven originals.

Our rugs are then luster-washed in much the same way native weavers of antiquity washed their creations; and finally, in one of the last steps before drying and inspection, buffed with the "Sultan's slipper". Drawing bundles of old wool lightly across the surface of the damp rug, this process imparts a rich patina to the finish much like that found on antique rugs that have been walked on for years.

*Karastan*  
RUGS



© Karastan

*THE ORIGINAL KARASTAN® COLLECTION*  
*N° 700-711 ESPALIER*

*Karastan*  
RUGS

# THE ORIGINAL KARASTAN® COLLECTION

## 700-711 ESPALIER

*Size shown: 8'8" x 12'*

*Sizes Available: 5'9" x 9', 8'8" x 10'6", 8'8" x 12' and 10' x 14'*

Inspired by an extraordinary antique Garden Heriz carpet, our 21st Century interpretation nods to the artistically trained fruit trees in a classical garden. Our *Espalier* pattern is designed in lush tones of sage green, spice red, Prussian blue and bark browns against a calm neutral field. The repeating central pattern of stylized pear trees, cypress and willow is perfectly balanced by a flowering vine and leaf border and exemplifies the deft use of classical motifs executed with a fresh point of view.

Rugs from the Original Karastan® Collection are meticulously woven in the U.S.A. of premium fully worsted New Zealand wool and represent the standard of excellence in wool rugs. Each of the 30 colors used in creation of this pattern have been individually skein dyed for clarity, woven through the back and finished with Karastan's patented Lustre-Wash™ to create as closely as possible the look and feel of the magnificent hand knotted rug that inspired it.

*Espalier* has been specifically designed to color coordinate with pattern #712 *Paysage*.





© Karastan

*THE ORIGINAL KARASTAN® COLLECTION*  
*N° 700-712 PAYSAGE*

*Karastan*  
RUGS

# THE ORIGINAL KARASTAN® COLLECTION

## 700-712 PAYSAGE

*Size shown: 8'8" x 12'*

*Sizes Available: 5'9" x 9', 8'8" x 10'6", 8'8" x 12' and 10' x 14'*

The lush palette and vinery trellis depicted in our *Paysage* design suggests that the antique rug that inspired it was probably woven in the early 18th century and is attributed to a classical group of central Persian weavings known as the 'Vase' carpets. Our 21st century interpretation is a veritable landscape of organic color featuring spice reds, Prussian blues, and warm browns against a subtle sage green field; and is surrounded by a distinctive flowering shrub and cypress border.

Rugs from the Original Karastan® Collection are meticulously woven in the U.S.A. of premium fully worsted New Zealand wool and represent the standard of excellence in wool rugs. Each of the 30 colors used in creation of this pattern have been individually skein dyed for clarity, woven through the back and finished with Karastan's patented Lustre-Wash™ to create as closely as possible the look and feel of the magnificent hand knotted rug that inspired it.

Our *Paysage* rug has been specifically designed to color coordinate with pattern #711 *Espalier*.





© Karastan

*THE ORIGINAL KARASTAN® COLLECTION*  
*N° 700-715 SERENO*

---

*Karastan*  
RUGS

# THE ORIGINAL KARASTAN® COLLECTION

## 700-715 SERENO

*Size shown: 8'8" x 12'*

*Sizes Available: 5'9" x 9', 8'8" x 10'6", 8'8" x 12' and 10' x 14'*

As serene as a summer sky, our *Sereno* pattern combines elements from an early 20th century Sultanabad carpet in a flowing arrangement softened by the tranquil beauty of a mineral inspired palette. Cerulean blue, rose quartz, peridot, amber, citrine, amethyst and topaz are gently combined in lush tones and old world ombres to provide a statement of relaxed elegance.

Rugs from the Original Karastan® Collection are meticulously woven in the U.S.A. of premium fully worsted New Zealand wool and represent the standard of excellence in wool rugs. Each of the 30 colors used in creation of this pattern have been individually skein dyed for clarity, woven through the back and finished with Karastan's patented Lustre-Wash™ to create as closely as possible the look and feel of the magnificent hand knotted rug that inspired it.





© Karastan

*THE ORIGINAL KARASTAN® COLLECTION  
N° 700-717 MULTICOLOR PANEL KIRMAN*

---

*Karastan*  
RUGS

# THE ORIGINAL KARASTAN® COLLECTION

## 700-717 MULTICOLOR PANEL KIRMAN

*Size shown: 5'9" x 9'*

*Sizes Available: 2'6" x 4'3", 2'6" x 8'6", 2'6" x 12', 4'3" x 6', 5'9" x 5'9", 5'9" x 9', 8'8" x 8'8", 8'8" x 10'6",  
8'8" x 12', 10' x 14' and 11'5" x 16' (also available as a continuous roll runner)*

The trademark patterns and colors so closely associated with the rugs of ancient Persia's Kirman region are actually the work of shawl makers. Though Kirman's rug weaving renown dates back to the early 16th century, it was the declining demand for their wares in the late 1800's that led shawl makers to develop the graceful style and intense coloration Kirman rugs became so famed for around the world; a style and coloration so beautifully illustrated here in this 50 color *Multicolor Panel Kirman* rug.

Rugs from the Original Karastan® Collection are meticulously woven in the U.S.A. of premium fully worsted New Zealand wool and represent the standard of excellence in wool rugs. Each of the 30 colors used in creation of this pattern have been individually skein dyed for clarity, woven through the back and finished with Karastan's patented Lustre-Wash™ to create as closely as possible the look and feel of the magnificent hand knotted rug that inspired it.





© Karastan

*THE ORIGINAL KARASTAN® COLLECTION  
N° 700-717 MULTICOLOR PANEL KIRMAN ROUND*

---

*Karastan*  
RUGS

# THE ORIGINAL KARASTAN® COLLECTION

## 700-717 MULTICOLOR PANEL KIRMAN

*Size shown: 5'9" x 9'*

*Sizes Available: 2'6" x 4'3", 2'6" x 8'6", 2'6" x 12', 4'3" x 6', 5'9" x 5'9", 5'9" x 9', 8'8" x 8'8", 8'8" x 10'6",  
8'8" x 12', 10' x 14' and 11'5" x 16' (also available as a continuous roll runner)*

The trademark patterns and colors so closely associated with the rugs of ancient Persia's Kirman region are actually the work of shawl makers. Though Kirman's rug weaving renown dates back to the early 16th century, it was the declining demand for their wares in the late 1800's that led shawl makers to develop the graceful style and intense coloration Kirman rugs became so famed for around the world; a style and coloration so beautifully illustrated here in this 50 color *Multicolor Panel Kirman* rug.

Rugs from the Original Karastan® Collection are meticulously woven in the U.S.A. of premium fully worsted New Zealand wool and represent the standard of excellence in wool rugs. Each of the 30 colors used in creation of this pattern have been individually skein dyed for clarity, woven through the back and finished with Karastan's patented Lustre-Wash™ to create as closely as possible the look and feel of the magnificent hand knotted rug that inspired it.





© Karastan

*THE ORIGINAL KARASTAN® COLLECTION  
N° 700-718 MEDALLION KIRMAN*

---

*Karastan*  
RUGS

# THE ORIGINAL KARASTAN® COLLECTION

## 700-718 MEDALLION KIRMAN

*Size shown: 8'8" x 12'*

*Sizes Available: 2'6" x 4'3", 4'3" x 6', 5'9" x 9', 8'8" x 10'6", and 8'8" x 12'*

The original antique from which this Kirman Medallion pattern rug was adapted probably dates from the 19th Century. The elaborate curvilinear design and field thickly strewn with arabesques and natural floral elements is a typical characteristic of rugs classified as Kirmans. Another almost constant characteristic is the use of many borders...usually five or seven...often decorated with plant vines. Also typical is the variety of colors with the predominance of ivory, blues and reds.

The color palette used in this pattern comes entirely from our *Multi-Color Panel Kirman*, making it a perfect complement. Emphasis has been placed on the rich indigo blue, brick and madder reds, tobacco golds and browns, olives and accents of soft aqua, soft coral and burgundy. Throughout the field, the colors have been abraded using many shades of each color, providing a stria effect typical of aged vegetable dyed yarns.





© Karastan

*THE ORIGINAL KARASTAN® COLLECTION*  
*N° 700-719 EMPRESS KIRMAN*

---

*Karastan*  
RUGS

# THE ORIGINAL KARASTAN® COLLECTION

700-719 EMPRESS KIRMAN

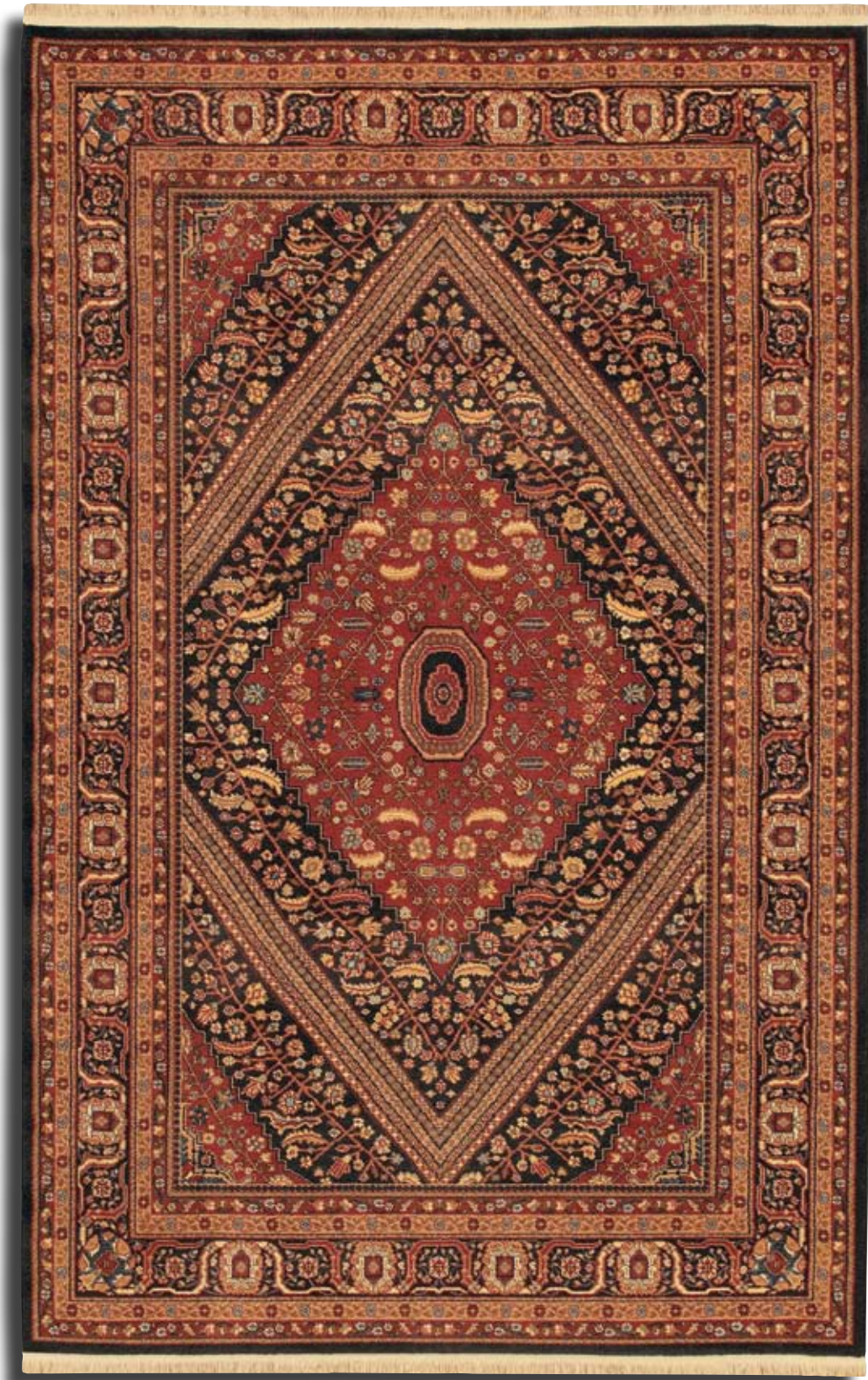
*Size shown: 8'8" x 12'*

*Sizes Available: 4'3" x 6', 5'9" x 9', 8'8" x 10'6", 8'8" x 12'*

The ancient province of Kirman is famous for producing some of the world's most elegant and refined oriental carpets. Kirman was known as a creative mecca, where designs were conceived and woven by masters of the art. Our graceful *Empress Kirman* is based on one of Karastan's most timeless and classic patterns - featuring floral bouquets arranged within cartouche panels. The panels resemble the many hued domes that towered, amid picturesque gardens and flowering trees, over the provincial city of Kirman.

Rugs from the Original Karastan® Collection are meticulously woven in the U.S.A. of premium fully worsted New Zealand wool and represent the standard of excellence in wool rugs. Each of the 30 colors used in creation of this pattern have been individually skein dyed for clarity, woven through the back and finished with Karastan's patented Lustre-Wash™ to create as closely as possible the look and feel of the magnificent hand knotted rug that inspired it.





© Karastan

*THE ORIGINAL KARASTAN® COLLECTION*  
*N° 700-723 BIDJAR*

---

*Karastan*  
RUGS

# THE ORIGINAL KARASTAN® COLLECTION

## 700-723 BIDJAR

*Size shown: 5'0" x 9'*

*Sizes Available: 5'0" x 9', 8'8" x 10'6", 8'8" x 12'*

Our *Bidjar* pattern is densely saturated with finely rendered details. A profusion of individual blossom motifs are organized along diagonal branches flanking a simple rosette center; while feather-like leaf motifs interspersed along the branches symbolize regeneration and immortality. The delicate blooms in the field are echoed in the meandering floral guard bands. Lush warm reds and rich black are accented with touches of Prussian blue, jade greens and golden maize.

Rugs from the Original Karastan® Collection are meticulously woven in the U.S.A. of premium fully worsted New Zealand wool and represent the standard of excellence in wool rugs. Each of the 30 colors used in creation of this pattern have been individually skein dyed for clarity, woven through the back and finished with Karastan's patented Lustre-Wash™ to create as closely as possible the look and feel of the magnificent hand knotted rug that inspired it.





© Karastan

*THE ORIGINAL KARASTAN® COLLECTION  
N° 700-724 EMPRESS KIRMAN BLACK*

---

*Karastan*  
RUGS

# THE ORIGINAL KARASTAN® COLLECTION

700-724 EMPRESS KIRMAN BLACK

*Size shown: 5'9" x 9'*

*Sizes Available: 5'9" x 9', 8'8" x 10'6", 8'8" x 12' (also available as a continuous runner)*

The ancient province of Kirman is famous for producing some of the world's most elegant and refined oriental carpets. Kirman was known as a creative mecca, where designs were conceived and woven by masters of the art. Our graceful *Empress Kirman Black* is based on one of Karastan's most timeless and classic patterns - featuring floral bouquets arranged within cartouche panels. The panels resemble the many hued domes that towered, amid picturesque gardens and flowering trees, over the provincial city of Kirman.

Rugs from the Original Karastan® Collection are meticulously woven in the U.S.A. of premium fully worsted New Zealand wool and represent the standard of excellence in wool rugs. Each of the 30 colors used in creation of this pattern have been individually skein dyed for clarity, woven through the back and finished with Karastan's patented Lustre-Wash™ to create as closely as possible the look and feel of the magnificent hand knotted rug that inspired it.

Our *Empress Kirman Black* rug coordinates beautifully with pattern #549-15006 *Agra Black* from our Ashara rug collection.





© Karastan

*THE ORIGINAL KARASTAN® COLLECTION*  
*N° 700-725 ANTIQUE RED OUSHAK*

*Karastan*  
RUGS

# THE ORIGINAL KARASTAN® COLLECTION

## 700-725 ANTIQUE RED OUSHAK

*Size shown: 5'9" x 9'*

*Sizes Available: 5'9" x 9', 8'8" x 10'6", 8'8" x 12'*

A 21st century Oushak pattern carpet inspired the vibrant hues found in our *Antique Red Oushak* design. Nature inspired colors are used throughout, including palmettes of maize, limestone and putty harmoniously placed on a rich tomato red field. Subtle and masterfully placed color striations provide exceptional depth and textural interest; and the overall composition is open and spacious lending an air of relaxed elegance.

Rugs from the Original Karastan® Collection are meticulously woven in the U.S.A. of premium fully worsted New Zealand wool and represent the standard of excellence in wool rugs. Each of the 30 colors used in creation of this pattern have been individually skein dyed for clarity, woven through the back and finished with Karastan's patented Lustre-Wash™ to create as closely as possible the look and feel of the magnificent hand knotted rug that inspired it.





© Karastan

*THE ORIGINAL KARASTAN® COLLECTION*  
*N° 700-727 EASTPORT*

---

*Karastan*  
RUGS

# THE ORIGINAL KARASTAN® COLLECTION

## 700-727 EASTPORT

*Size shown: 5'0" x 9'*

*Sizes Available: 5'0" x 9', 8'8" x 10'6", 8'8" x 12'*

Rich color striations provide exceptional depth and textural interest in our modern day interpretation of an Agra carpet. The overall composition of our *Eastport* pattern lends an air of relaxed elegance, while nature inspired accents of terra cotta, hemp and just harmonize beautifully against the Prussian blue ground.

Rugs from the Original Karastan® Collection are meticulously woven in the U.S.A. of premium fully worsted New Zealand wool and represent the standard of excellence in wool rugs. Each of the 30 colors used in creation of this pattern have been individually skein dyed for clarity, woven through the back and finished with Karastan's patented Lustre-Wash™ to create as closely as possible the look and feel of the magnificent hand knotted rug that inspired it.





© Karastan

*THE ORIGINAL KARASTAN® COLLECTION*  
*N° 700-728 PERSIAN GARDEN*

---

*Karastan*  
RUGS

# THE ORIGINAL KARASTAN® COLLECTION

## 700-728 PERSIAN GARDEN

*Size shown: 5'9" x 9'*

*Sizes Available: 5'9" x 9', 8'8" x 10'6", 8'8" x 12'*

*Persian Garden's* pattern, inspired by a beautiful antique Persian Rug, showcases the masterful combination of color and design achievable on Karastan's Axminster looms. The intricacies of the stylized floral pattern and the "ombre" effect of *Persian Garden* make this rug a visual garden. Understated blues from pale glacier blue to slate to Prussian blue with tiny accents of persimmon and terra cotta are combined to achieve a palette that is understated and elegant.

Rugs from the Original Karastan® Collection are meticulously woven in the U.S.A. of premium fully worsted New Zealand wool and represent the standard of excellence in wool rugs. Each of the 30 colors used in creation of this pattern have been individually skein dyed for clarity, woven through the back and finished with Karastan's patented Lustre-Wash™ to create as closely as possible the look and feel of the magnificent hand knotted rug that inspired it.

Our *Persian Garden* pattern coordinates nicely with *700-727 Eastport*.





© Karastan

*THE ORIGINAL KARASTAN® COLLECTION*  
*N° 700-730 BELLA ROSA*

---

*Karastan*  
RUGS

# THE ORIGINAL KARASTAN® COLLECTION

## 700-730 BELLA ROSA

*Size shown: 5'9" x 9'*

*Sizes Available: 5'9" x 9', 8'8" x 10'6", and 8'8" x 12'*

*Bella Rosa* is a genuine 'America Beauty' featuring a classic and easy to live with pattern of palmettes and delicate vines set against a background of vivid red. This exceptionally beautiful design is loaded with visual texture consisting of perfectly balanced motifs created in neutral shades of dried wild grass and is accented with small areas of peacock blue.

Rugs from the Original Karastan® Collection are meticulously woven in the U.S.A. of premium fully worsted New Zealand wool and represent the standard of excellence in wool rugs. Each of the 30 colors used in creation of this pattern have been individually skein dyed for jewel tone clarity, woven through the back and finished with Karastan's patented Lustre-Wash™ to create as closely as possible the look and feel of the magnificent hand knotted rug that inspired it.





© Karastan

*THE ORIGINAL KARASTAN® COLLECTION*  
*N° 700-742 FLORAL KIRMAN PATTERN*

---

*Karastan*  
RUGS

# THE ORIGINAL KARASTAN® COLLECTION

700-742 FLORAL KIRMAN PATTERN

*Size shown: 5'9" x 9'*

*Sizes Available: 5'9" x 9', 8'8" x 10'6", and 8'8" x 12'*

This 30-color *Floral Kirman* rug is a beautiful example of the rich intensity woven into rug designs from the Kirman region of ancient Persia. Late in the 1800s, shawl makers from the region went in search of a new use for their artistry and design skills. They soon found their place in the rug weaving industry, transferring their mastery of intricate detail to the larger scale of rug design.

Rugs from the Original Karastan® Collection are meticulously woven in the U.S.A. of premium fully worsted New Zealand wool and represent the standard of excellence in wool rugs. Each of the 30 colors used in creation of this pattern have been individually skein dyed for jewel tone clarity, woven through the back and finished with Karastan's patented Lustre-Wash™ to create as closely as possible the look and feel of the magnificent hand knotted rug that inspired it.





© Karastan

*THE ORIGINAL KARASTAN® COLLECTION*  
*N° 700-785 RED SAROUK*

---

*Karastan*  
RUGS

# THE ORIGINAL KARASTAN® COLLECTION

## 700-785 RED SAROUK

*Size shown: 5'9" x 9'*

*Sizes Available: 2'6" x 8'6", 4'3" x 6', 5'9" x 9', 8'8" x 10'6", and 8'8" x 12' (also available as a continuous runner)*

Though the Sarouk name is often used to describe the rug designs from all over the Feraghan plains area of ancient Persia, this is one of the rare instances where a Sarouk rug actually was designed in the tiny village of the same name. First brought to America in the early 1900's, this detached-floral Sarouk has been a favorite in this country almost from the start.

Rugs from the Original Karastan® Collection are meticulously woven in the U.S.A. of premium fully worsted New Zealand wool and represent the standard of excellence in wool rugs. Each of the 30 colors used in creation of this pattern have been individually skein dyed for jewel tone clarity, woven through the back and finished with Karastan's patented Lustre-Wash™ to create as closely as possible the look and feel of the magnificent hand knotted rug that inspired it.



## ASHARA™

Classic design merges with easy going elegance in a collection that combines timeless elements without the formal styling. These easy to live with patterns and mellowed colors are perfectly matched to today's most stylish interiors.

A distinctive characteristic of all Ashara rugs is the carefully crafted use of multiple color shadings, most noticeably in the open grounds and borders, giving the effect of irregularly dyed vegetable yarns. This softened visual texture gives these rugs a relaxed appeal that is comfortable with both traditional and casual furnishings.

Rugs from the Ashara collection are woven in the U.S.A. of premium fully worsted New Zealand wool and represent the standard of excellence in wool rugs. Each of the 30 colors used in creation of these patterns have been individually skein dyed for jewel tone clarity, woven through the back and luster-washed to create as closely as possible the look and feel of the magnificent hand knotted rugs that inspired them.

*Karastan*  
RUGS



© Karastan

ASHARA™  
N° 549-15002 AGRA

---

*Karastan*  
RUGS

# ASHARA™

## 549-15002 AGRA

*Size shown: 5'0" x 9'*

*Sizes Available: 2'6" x 4', 4'3" x 6', 5'0" x 9', 8'8" x 10', 8'8" x 12', 10' x 14', 11'5" x 16'  
2'6" x 8' runner, 2'6" x 12' runner and 8'8" round.*

This scrolling vine and blossom design is punctuated with oversize palmettes and serrated leaves typical of both Agra and Lahore carpets woven during the mid 17th century Mogul dynasty. Red was a favored ground color of these carpets and Karastan's interpretation is punctuated with rich, fresh, easy to live with color.

A distinctive characteristic of all Ashara rugs is the carefully crafted use of multiple color shadings, most noticeably in the open grounds and borders, giving the effect of irregularly dyed vegetable yarns. This softened visual texture gives these rugs a relaxed appeal that is comfortable with both traditional and casual furnishings.

Rugs from the Ashara collection are woven in the U.S.A. of premium fully worsted New Zealand wool and represent the standard of excellence in wool rugs. Each of the 30 colors used in creation of this pattern have been individually skein dyed for jewel tone clarity, woven through the back and luster-washed to create as closely as possible the look and feel of the magnificent hand knotted rug that inspired it.





© Karastan

*ASHARA™*  
*N° 549-15002 AGRA ROUND*

---

*Karastan*  
RUGS

# ASHARA™

## 549-15002 AGRA ROUND

*Size shown: 8'8" round*

*Sizes Available: 2'6" x 4', 4'3" x 6', 5'9" x 9', 8'8" x 10', 8'8" x 12', 10' x 14', 11'5" x 16'  
2'6" x 8' runner, 2'6" x 12' runner and 8'8" round.*

This scrolling vine and blossom design is punctuated with oversize palmettes and serrated leaves typical of both Agra and Lahore carpets woven during the mid 17th century Mogul dynasty. Red was a favored ground color of these carpets and Karastan's interpretation is punctuated with rich, fresh, easy to live with color.

A distinctive characteristic of all Ashara rugs is the carefully crafted use of multiple color shadings, most noticeably in the open grounds and borders, giving the effect of irregularly dyed vegetable yarns. This softened visual texture gives these rugs a relaxed appeal that is comfortable with both traditional and casual furnishings.

Rugs from the Ashara collection are woven in the U.S.A. of premium fully worsted New Zealand wool and represent the standard of excellence in wool rugs. Each of the 30 colors used in creation of this pattern have been individually skein dyed for jewel tone clarity, woven through the back and luster-washed to create as closely as possible the look and feel of the magnificent hand knotted rug that inspired it.





© Karastan

*ASHARA™*  
*N° 540-15005 AGRA IVORY*

---

*Karastan*  
RUGS

# ASHARA™

## 549-15005 AGRA IVORY

*Size shown: 5'9" x 9'*

*Sizes Available: 2'6" x 4', 4'3" x 6', 5'9" x 9', 8'8" x 10', 8'8" x 12', 10' x 14', 2'6" x 8' runner and 8'8" round*

This engaging vine and blossom design features oversize palmettes and serrated leaves - typical of both Agra and Lahore carpets woven during the mid 17th century Mogul dynasty. Karastan's modern day interpretation is enhanced with a fresh color palette of coral reds with accents of marine blue, soft greens, and muted yellows on an antique ivory ground.

A distinctive characteristic of all Ashara rugs is the carefully crafted use of multiple color shadings, most noticeably in the open grounds and borders, giving the effect of irregularly dyed vegetable yarns. This softened visual texture gives these rugs a relaxed appeal that is comfortable with both traditional and casual furnishings.

Rugs from the Ashara collection are woven in the U.S.A. of premium fully worsted New Zealand wool and represent the standard of excellence in wool rugs. Each of the 30 colors used in creation of this pattern have been individually skein dyed for jewel tone clarity, woven through the back and luster-washed to create as closely as possible the look and feel of the magnificent hand knotted rug that inspired it.





© Karastan

*ASHARA™*  
*Nº 549-15005 AGRA IVORY ROUND*

---

*Karastan*  
RUGS

# ASHARA™

## 549-15005 AGRA IVORY ROUND

*Size shown: 8'8" round*

*Sizes Available: 2'6" x 4', 4'3" x 6', 5'0" x 9', 8'8" x 10', 8'8" x 12', 10' x 14', 2'6" x 8' runner and 8'8" round*

This engaging vine and blossom design features oversize palmettes and serrated leaves - typical of both Agra and Lahore carpets woven during the mid 17th century Mogul dynasty. Karastan's modern day interpretation is enhanced with a fresh color palette of coral reds with accents of marine blue, soft greens, and muted yellows on an antique ivory ground.

A distinctive characteristic of all Ashara rugs is the carefully crafted use of multiple color shadings, most noticeably in the open grounds and borders, giving the effect of irregularly dyed vegetable yarns. This softened visual texture gives these rugs a relaxed appeal that is comfortable with both traditional and casual furnishings.

Rugs from the Ashara collection are woven in the U.S.A. of premium fully worsted New Zealand wool and represent the standard of excellence in wool rugs. Each of the 30 colors used in creation of this pattern have been individually skein dyed for jewel tone clarity, woven through the back and luster-washed to create as closely as possible the look and feel of the magnificent hand knotted rug that inspired it.





© Karastan

*ASHARA™*  
*N° 549-15006 AGRA BLACK*

---

*Karastan*  
RUGS

ASHARA™  
549-15006 AGRA BLACK

*Size shown: 5'9" x 9'*

*Sizes Available: 5'0" x 9', 8'8" x 10'6", 8'8" x 12'*

This engaging vine and blossom design features oversize palmettes and serrated leaves - typical of both Agra and Lahore carpets woven during the mid 17th century Mogul dynasty. Karastan's modern day interpretation is enhanced with fresh accents of coral reds, marine blues, soft greens and muted yellows on a rich black ground.

A distinctive characteristic of all Ashara rugs is the carefully crafted use of multiple color shadings, most noticeably in the open grounds and borders, giving the effect of irregularly dyed vegetable yarns. This softened visual texture gives these rugs a relaxed appeal that is comfortable with both traditional and casual furnishings.

Rugs from the Ashara collection are woven in the U.S.A. of premium fully worsted New Zealand wool and represent the standard of excellence in wool rugs. Each of the 30 colors used in creation of this pattern have been individually skein dyed for jewel tone clarity, woven through the back and luster-washed to create as closely as possible the look and feel of the magnificent hand knotted rug that inspired it.





© Karastan

*ASHARA™*  
*Nº 540-15007 AGRA BORDER*

---

*Karastan*  
RUGS

# ASHARA™

## 549-15007 AGRA BORDER

*Size shown: 5'9" x 9'*

*Sizes Available: 5'0" x 9', 8'8" x 10'6", 8'8" x 12'*

This dramatic border design features oversize palmettes and flowing vines - typical of both Agra and Lahore carpets woven during the mid 17th century Mogul dynasty. Karastan's modern day interpretation is enhanced with fresh accents of marine blues, mossy greens, soft yellows, earth tones, and black against a coral red ground.

The artful 'stria' effect so beautifully evident in the center field is created by combining many gradations of color in order to achieve the rich variations often found in fine carpets woven with hand-dyed, hand spun yarns. This softened visual texture gives these rugs a relaxed appeal that is comfortable with both traditional and casual furnishings.

Rugs from the Ashara collection are woven in the U.S.A. of premium fully worsted New Zealand wool, using dozens of individually skein dyed yarns for jewel tone clarity. The yarn is then woven through the back and finished with Karastan's Lustre-Wash™ process to re-create as closely as possible the look and feel of a fine hand-woven rug.

The *Agra Border* pattern makes a stunning companion to *549-15002 Agra*, *549-15005 Agra Ivory*, *549-15006 Agra Black*, and *724 Empress Kirman Black*.





© Karastan

ASHARA™  
N° 540-15008 RAVENNA

---

*Karastan*  
RUGS

# ASHARA™

## 549-15008 RAVENNA

*Size shown: 5'0" x 9'*

*Sizes Available: 5'0" x 9', 8'8" x 10'6", 8'8" x 12'*

This dramatic border design features oversize palmettes and flowing vines - typical of both Agra and Lahore carpets woven during the mid 17th century Mogul dynasty. Karastan translates these classic motifs into a modern day interpretation with an open and airy flavor. Fresh accents of butterscotch, saddle, soft brown and cherry red resonate against a mocha ground.

The artful 'stria' effect so beautifully evident in the center field is created by combining many gradations of color in order to achieve the rich variations often found in fine carpets woven with hand-dyed, hand spun yarns. This softened visual texture gives these rugs a relaxed appeal that is comfortable with both traditional and casual furnishings.

Rugs from the Ashara collection are woven in the U.S.A. of premium fully worsted New Zealand wool, using dozens of individually skein dyed yarns for jewel tone clarity. The yarn is then woven through the back and finished with Karastan's Lustre-Wash™ process to re-create as closely as possible the look and feel of a fine hand-woven rug.





© Karastan

*ASHARA™*  
*N° 540-15009 TOSCANA*

---

*Karastan*  
RUGS

ASHARA™  
549-15009 TOSCANA

*Size shown: 5'0" x 9'*

*Sizes Available: 5'0" x 9', 8'8" x 10'6", 8'8" x 12'*

The graceful motifs and open ground in our *Toscana* pattern showcase the signature 'stria' effect used throughout the Ashara collection. In the background and motifs many gradations of color are utilized to achieve the rich variations often found in fine carpets woven with hand-dyed, hand spun yarns.

This softened visual texture gives these rugs a relaxed appeal that is comfortable with both traditional and casual furnishings. Nature inspired accents of mocha, sea glass, soft brown and cherry red resonate against a subtle creamed coffee ground.

Rugs from the Ashara collection are woven in the U.S.A. of premium fully worsted New Zealand wool, using dozens of individually skein dyed yarns for jewel tone clarity. The yarn is then woven through the back and finished with Karastan's Lustre-Wash™ process to re-create as closely as possible the look and feel of a fine hand-woven rug.

Our *Toscana* pattern coordinates beautifully with pattern *549-15008 Ravenna*.







© Karastan

SIERRA MAR™  
N° 35505-33002 SEDONA - LIMESTONE

---

*Karastan*  
RUGS

SIERRA MAR™  
35505-33002 SEDONA - LIMESTONE

*Size shown: 5'6" x 8'3"*  
*Sizes Available: 2'5" x 4', 3'3" x 5'6", 5'6" x 8'3", 8' x 10', 8'6" x 11'6", 9'6" x 13'2"*  
*runners 2'5" x 8' and 2'5" x 12'*

Comfortable, weathered, easy to live with color is the signature style of the Sierra Mar collection; with relaxed patterns that work beautifully with both traditional and modern design. The use of specially twisted space-dyed yarns creates artful color 'stria' reminiscent of fine hand woven 'Peshawar' rugs.

Our *Sedona - Limestone* pattern is a casually elegant composition of leafy vines and palmettes rendered in a palette of sage greens, soft browns, maize, henna, and robin's egg blue.

Woven in the U.S.A. of premium New Zealand worsted wool, our *Sedona - Limestone* rug has a wonderfully soft hand and a durable construction. As practical as they are beautiful, rugs from the Sierra Mar collection provide decorating solutions with a look that is comfortable and casually elegant.

*Sedona - Limestone* is compatible with the following Sierra Mar pattern:

*35505-33003 Sedona - Ivory/Henna*  
*35505-33004 Sedona - Henna*





© Karastan

SIERRA MAR™  
N° 35505-33003 SEDONA - IVORY/HENNA

---

*Karastan*  
RUGS

# SIERRA MAR™

35505-33003 SEDONA - IVORY/HENNA

*Size shown: 5'6" x 8'3"*

*Sizes Available: 2'5" x 4', 3'3" x 5'6", 5'6" x 8'3", 8' x 10', 8'6" x 11'6", 9'6" x 13'2"  
runners 2'5" x 8' and 2'5" x 12'*

Comfortable, weathered, easy to live with color is the signature style of the Sierra Mar collection; with relaxed patterns that work beautifully with both traditional and modern design. The use of specially twisted space-dyed yarns creates artful color 'stria' reminiscent of fine hand woven 'Peshawar' rugs.

Our *Sedona - Ivory/Henna* pattern is a casually elegant composition of leafy vines and palmettes rendered in a palette of maize, sage greens, soft browns and robin's egg blue, framed by a henna border.

Woven in the U.S.A. of premium New Zealand worsted wool, our *Sedona - Ivory/Henna* rug has a wonderfully soft hand and a durable construction. As practical as they are beautiful, rugs from the Sierra Mar collection provide decorating solutions with a look that is comfortable and casually elegant.

*Sedona - Ivory/Henna* is compatible with the following Sierra Mar pattern:

*35505-33002 Sedona - Limestone*

*35505-33004 Sedona - Henna*





© Karastan

SIERRA MAR™  
N° 35505-33004 SEDONA - HENNA

---

*Karastan*  
RUGS

SIERRA MAR™  
35505-33004 SEDONA - HENNA

*Size shown: 5'6" x 8'3"*  
*Sizes Available: 2'5" x 4', 3'3" x 5'6", 5'6" x 8'3", 8' x 10', 8'6" x 11'6", 9'6" x 13'2"*  
*runners 2'5" x 8' and 2'5" x 12'*

Comfortable, weathered, easy to live with color is the signature style of the Sierra Mar collection; with relaxed patterns that work beautifully with both traditional and modern design. The use of specially twisted space-dyed yarns creates artful color 'stria' reminiscent of fine hand woven 'Peshawar' rugs.

Our *Sedona - Henna* pattern is a casually elegant composition of leafy vines and palmettes rendered in a palette of maize, sage greens, soft browns and robin's egg blue, on a field of henna.

Woven in the U.S.A. of premium New Zealand worsted wool, our *Sedona - Henna* rug has a wonderfully soft hand and a durable construction. As practical as they are beautiful, rugs from the Sierra Mar collection provide decorating solutions with a look that is comfortable and casually elegant.

*Sedona - Henna* is compatible with the following Sierra Mar pattern:

*35505-33002 Sedona - Limestone*  
*35505-33003 Sedona - Ivory/Henna*





© Karastan

SIERRA MAR™  
N° 35505-33005 CAPRI - MAIZE

---

*Karastan*  
RUGS

SIERRA MAR™  
35505-33005 CAPRI - MAIZE

*Size shown: 5'0" x 8'3"*  
*Sizes Available: 2'5" x 4', 3'3" x 5'6", 5'6" x 8'3", 8' x 10', 8'6" x 11'6", 9'6" x 13'2"*  
*runners 2'5" x 8' and 2'5" x 12'*

Comfortable, weathered, easy to live with color is the signature style of the Sierra Mar collection; with relaxed patterns that work beautifully with both traditional and modern design. The use of specially twisted space-dyed yarns creates artful color 'stria' reminiscent of fine hand woven 'Peshawar' rugs.

Our *Capri - Maize* pattern is a refined composition of palmettes and leafy vines rendered in a palette that features maize yellow, soft browns, moss green and tiny accents of henna and robin's egg blue.

Woven in the U.S.A. of premium New Zealand worsted wool, our *Capri - Maize* rug has a wonderfully soft hand and a durable construction. As practical as they are beautiful, rugs from the Sierra Mar collection provide decorating solutions with a look that is comfortable and casually elegant.

*Capri - Maize* is a lovely companion for *35505-33007 Ventana - Maize*.





© Karastan

SIERRA MAR™  
N° 35505-33007 VENTANA - MAIZE

---

*Karastan*  
RUGS

SIERRA MAR™  
35505-33007 VENTANA - MAIZE

*Size shown: 5'6" x 8'3"*  
*Sizes Available: 2'5" x 4', 3'3" x 5'6", 5'6" x 8'3", 8' x 10', 8'6" x 11'6", 9'6" x 13'2"*  
*runners 2'5" x 8' and 2'5" x 12'*

Comfortable, weathered, easy to live with color is the signature style of the Sierra Mar collection; with relaxed patterns that work beautifully with both traditional and modern design. The use of specially twisted space-dyed yarns creates artful color 'stria' reminiscent of fine hand woven 'Peshawar' rugs.

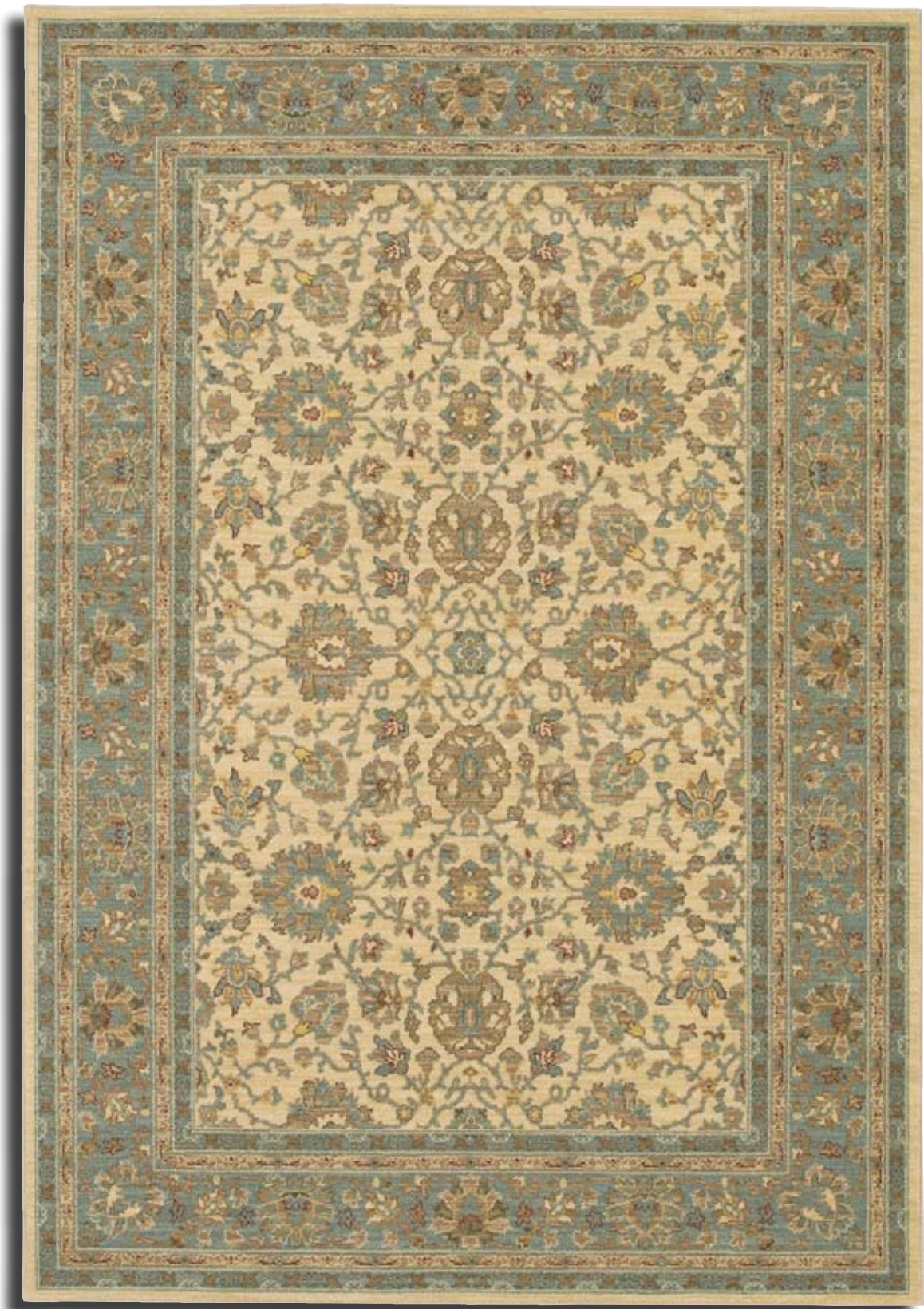
Our *Ventana - Maize* pattern is a lush composition of palmettes and stylized leafy vines rendered in a palette that features accents of robin's egg blue, soft browns, moss green and henna on a soft maize ground.

Woven in the U.S.A. of premium New Zealand worsted wool, our *Ventana - Maize* rug has a wonderfully soft hand and a durable construction. As practical as they are beautiful, rugs from the Sierra Mar collection provide decorating solutions with a look that is comfortable and casually elegant.

*Ventana - Maize* is a lovely companion for the following Sierra Mar patterns:

*35505-33005 Capri - Maize*  
*35505-33008 Capri - Robin's Egg*





© Karastan

SIERRA MAR™  
N° 35505-33008 CAPRI - ROBIN'S EGG

---

*Karastan*  
RUGS

SIERRA MAR™  
35505-33008 CAPRI - ROBIN'S EGG

*Size shown: 5'6" x 8'3"*  
*Sizes Available: 2'5" x 4', 3'3" x 5'6", 5'6" x 8'3", 8' x 10', 8'6" x 11'6", 9'6" x 13'2"*  
*runners 2'5" x 8' and 2'5" x 12'*

Comfortable, weathered, easy to live with color is the signature style of the Sierra Mar collection; with relaxed patterns that work beautifully with both traditional and modern design. The use of specially twisted space-dyed yarns creates artful color 'stria' reminiscent of fine hand woven 'Peshawar' rugs.

Our *Capri - Robin's Egg* pattern is a refined composition of palmettes and leafy vines rendered in a palette that features soothing blue, soft browns, moss green and tiny accents of henna and maize.

Woven in the U.S.A. of premium New Zealand worsted wool, our *Capri - Robin's Egg* rug has a wonderfully soft hand and a durable construction. As practical as they are beautiful, rugs from the Sierra Mar collection provide decorating solutions with a look that is comfortable and casually elegant.

*Capri - Robin's Egg* is a distinctive companion for:

*35505-33007 Ventana - Maize.*





© Karastan

SIERRA MAR™  
N° 35505-33009 SEDONA - IVORY/LIMESTONE

*Karastan*  
RUGS

SIERRA MAR™  
35505-33009 SEDONA - IVORY/LIMESTONE

*Size shown: 5'6" x 8'3"*  
*Sizes Available: 2'5" x 4', 3'3" x 5'6", 5'6" x 8'3", 8' x 10', 8'6" x 11'6", 9'6" x 13'2"*  
*runners 2'5" x 8' and 2'5" x 12'*

Comfortable, weathered, easy to live with color is the signature style of the Sierra Mar collection; with relaxed patterns that work beautifully with both traditional and modern design. The use of specially twisted space-dyed yarns creates artful color 'stria' reminiscent of fine hand woven 'Peshawar' rugs.

Our *Sedona - Ivory/Limestone* pattern is a casually elegant composition of leafy vine and palmettes rendered in a palette sage greens, soft browns, maize, henna and robin's egg blue on a soft ivory field.

Woven in the U.S.A. of premium New Zealand worsted wool, our *Sedona - Ivory/Limestone* rug has a wonderfully soft hand and a durable construction. As practical as they are beautiful, rugs from the Sierra Mar collection provide decorating solutions with a look that is comfortable and casually elegant.

*Sedona - Ivory/Limestone* is compatible with the following Sierra Mar pattern:

*35505-33002 Sedona - Limestone*





© Karastan

SIERRA MAR™  
N° 35505-33010 JAKARTA BATIK - ROBIN'S EGG

---

*Karastan*  
RUGS

SIERRA MAR™  
35505-33010 JAKARTA BATIK - ROBIN'S EGG

*Size shown: 5'0" x 8'3"*  
*Sizes Available: 2'5" x 4', 3'3" x 5'6", 5'0" x 8'3", 8' x 10', 8'6" x 11'6", 9'6" x 13'2"*  
*runners 2'5" x 8' and 2'5" x 12'*

Comfortable, weathered, easy to live with color is the signature style of the Sierra Mar collection; with relaxed patterns that work beautifully with both traditional and modern design. The use of specially twisted space-dyed yarns creates artful color 'stria' reminiscent of fine hand woven 'Peshawar' rugs.

Our *Jakarta Batik - Robin's Egg* pattern is a fascinating patchwork of relaxed floral brocade inspired designs. Compositions of arabesque leafy vines are rendered in a palette that features soothing blue, maize, soft mocha brown and ivory.

Woven in the U.S.A. of premium New Zealand worsted wool, our *Jakarta Batik - Robin's Egg* rug has a wonderfully soft hand and a durable construction. As practical as they are beautiful, rugs from the Sierra Mar collection provide decorating solutions with a look that is comfortable and casually elegant.

*Jakarta Batik - Robin's Egg* is color compatible with the following rugs from the Sierra Mar collection:

*35505-33008 Capri - Robin's Egg*  
*35505-33012 Marie-Louise - Robin's Egg*





© Karastan

SIERRA MAR™  
N° 35505-33011 JAKARTA BATIK - IVORY/BLACK

*Karastan*  
RUGS

SIERRA MAR™  
35505-33011 JAKARTA BATIK - IVORY/BLACK

*Size shown: 5'6" x 8'3"*  
*Sizes Available: 2'5" x 4', 3'3" x 5'6", 5'6" x 8'3", 8' x 10', 8'6" x 11'6", 9'6" x 13'2"*  
*runners 2'5" x 8' and 2'5" x 12'*

Comfortable, weathered, easy to live with color is the signature style of the Sierra Mar collection; with relaxed patterns that work beautifully with both traditional and modern design. The use of specially twisted space-dyed yarns creates artful color 'stria' reminiscent of fine hand woven 'Peshawar' rugs.

Our *Jakarta Batik - Ivory/Black* pattern is a statement making patchwork of relaxed floral brocade inspired designs. Compositions of leafy arabesque vines are rendered in a palette that features mocha browns and softened ivory contrasted against a velvety jet black.

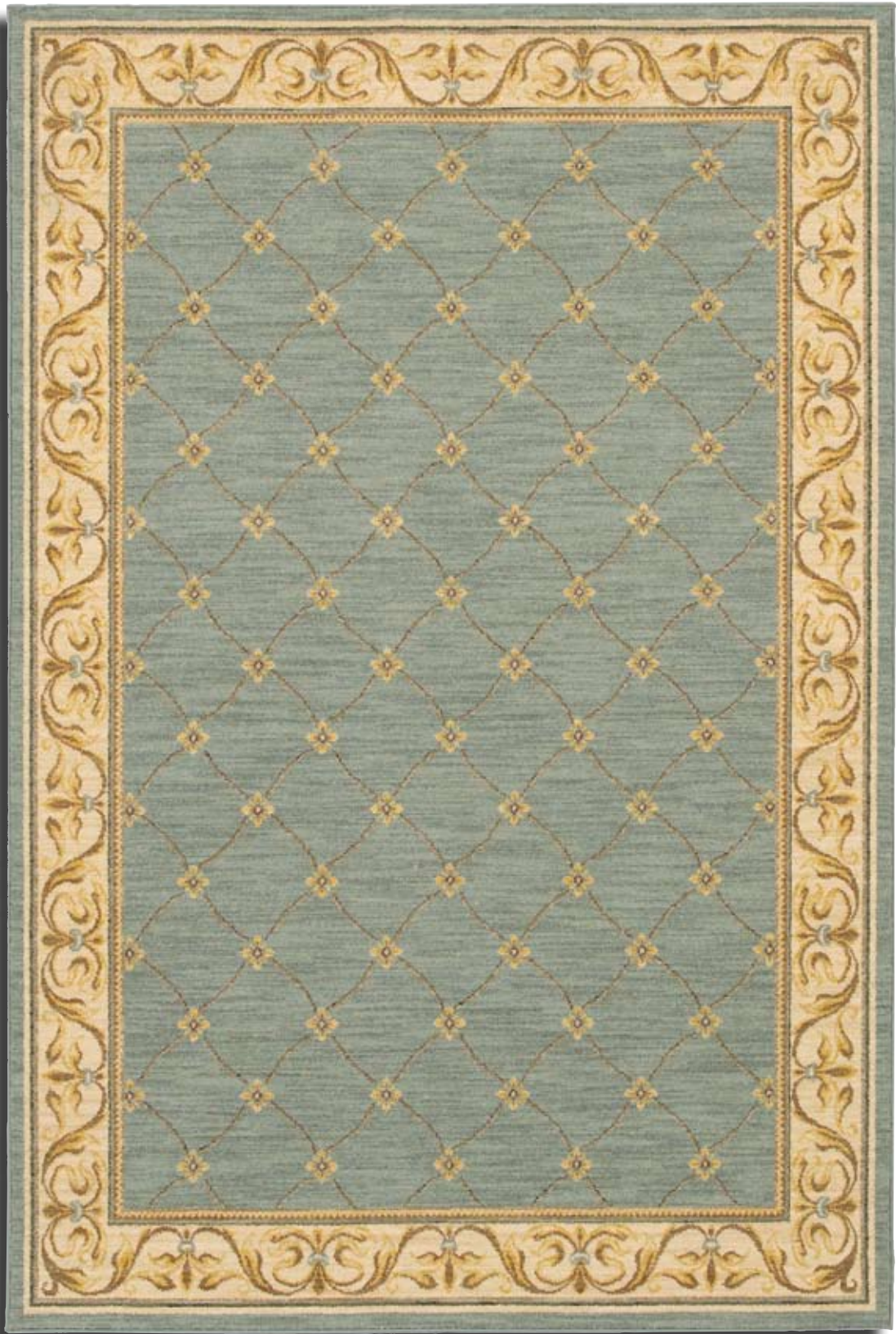
Woven in the U.S.A. of premium New Zealand worsted wool, our *Jakarta Batik - Ivory/Black* rug has a wonderfully soft hand and a durable construction. As practical as they are beautiful, rugs from the Sierra Mar collection provide decorating solutions with a look that is comfortable and casually elegant.

*Jakarta Batik - Ivory/Black* is color compatible with the following rugs from the Sierra Mar collection:

*35505-33013 Mary-Louise - Ivory/Black*

*35505-33014 Kismet - Ivory/Black*





© Karastan

SIERRA MAR™  
N° 35505-33012 MARIE-LOUISE - ROBIN'S EGG

---

*Karastan*  
RUGS

# SIERRA MAR™

35505-33012 MARIE-LOUISE - ROBIN'S EGG

*Size shown: 5'0" x 8'3"*

*Sizes Available: 2'5" x 4', 3'3" x 5'0", 5'0" x 8'3", 8' x 10', 8'0" x 11'0", 9'0" x 13'2"  
runners 2'5" x 8' and 2'5" x 12'*

Comfortable, weathered, easy to live with color is the signature style of the Sierra Mar collection; with relaxed patterns that work beautifully with both traditional and modern design. The use of specially twisted space-dyed yarns creates artful color 'stria' reminiscent of fine hand woven 'Peshawar' rugs.

Our *Marie-Louise - Robin's Egg* pattern features a gentle lattice design surrounded by a fleur-de-lis inspired border. The design motifs are rendered in a palette that features soft blue, pale mocha browns and ivory with tiny accents of maize.

Woven in the U.S.A. of premium New Zealand worsted wool, our *Marie-Louise - Robin's Egg* rug has a wonderfully soft hand and a durable construction. As practical as they are beautiful, rugs from the Sierra Mar collection provide decorating solutions with a look that is comfortable and casually elegant.

*Marie-Louise - Robin's Egg* is color compatible with the following rugs from the Sierra Mar collection:

*35505-33007 Ventana - Maize*

*35505-33008 Capri - Robin's Egg*

*35505-33010 Jakarta Batik - Robin's Egg*





© Karastan

SIERRA MAR™  
N° 35505-33013 MARIE-LOUISE - IVORY/BLACK

---

*Karastan*  
RUGS

# SIERRA MAR™

35505-33013 MARIE-LOUISE - IVORY/BLACK

*Size shown: 5'0" x 8'3"*

*Sizes Available: 2'5" x 4', 3'3" x 5'6", 5'0" x 8'3", 8' x 10', 8'6" x 11'6", 9'6" x 13'2"  
runners 2'5" x 8' and 2'5" x 12'*

Comfortable, weathered, easy to live with color is the signature style of the Sierra Mar collection; with relaxed patterns that work beautifully with both traditional and modern design. The use of specially twisted space-dyed yarns creates artful color 'stria' reminiscent of fine hand woven 'Peshawar' rugs.

Our *Marie-Louise - Ivory/Black* pattern features a gentle lattice design surrounded by a fleur-de-lis inspired border. The design motifs are rendered in a palette that features mocha browns and softened ivory with tiny accents of maize and robin's egg blue contrasted with a jet black border.

Woven in the U.S.A. of premium New Zealand worsted wool, our *Marie-Louise - Ivory/Black* rug has a wonderfully soft hand and a durable construction. As practical as they are beautiful, rugs from the Sierra Mar collection provide decorating solutions with a look that is comfortable and casually elegant.

*Marie-Louise - Ivory/Black* is color compatible with the following rugs from the Sierra Mar collection:

*35505-33011 Jakarta Batik - Ivory/Black*

*35505-33014 Kismet - Ivory/Black*





© Karastan

SIERRA MAR™  
N° 35505-33014 KISMET - IVORY/BLACK

*Karastan*  
RUGS

# SIERRA MAR™

35505-33014 KISMET - IVORY/BLACK

*Size shown: 5'0" x 8'3"*

*Sizes Available: 2'5" x 4', 3'3" x 5'6", 5'0" x 8'3", 8' x 10', 8'6" x 11'6", 9'6" x 13'2"  
runners 2'5" x 8' and 2'5" x 12'*

Comfortable, weathered, easy to live with color is the signature style of the Sierra Mar collection; with relaxed patterns that work beautifully with both traditional and modern design. The use of specially twisted space-dyed yarns creates artful color 'stria' reminiscent of fine hand woven 'Peshawar' rugs.

Our *Kismet - Ivory/Black* design features a delicate arabesque vine reminiscent of decorative ironwork. The pattern is complex, yet flows in perfect harmony and is framed by an intricate chain-link border motif. The simple palette of softened ivory and jet black makes a versatile companion to almost any color scheme.

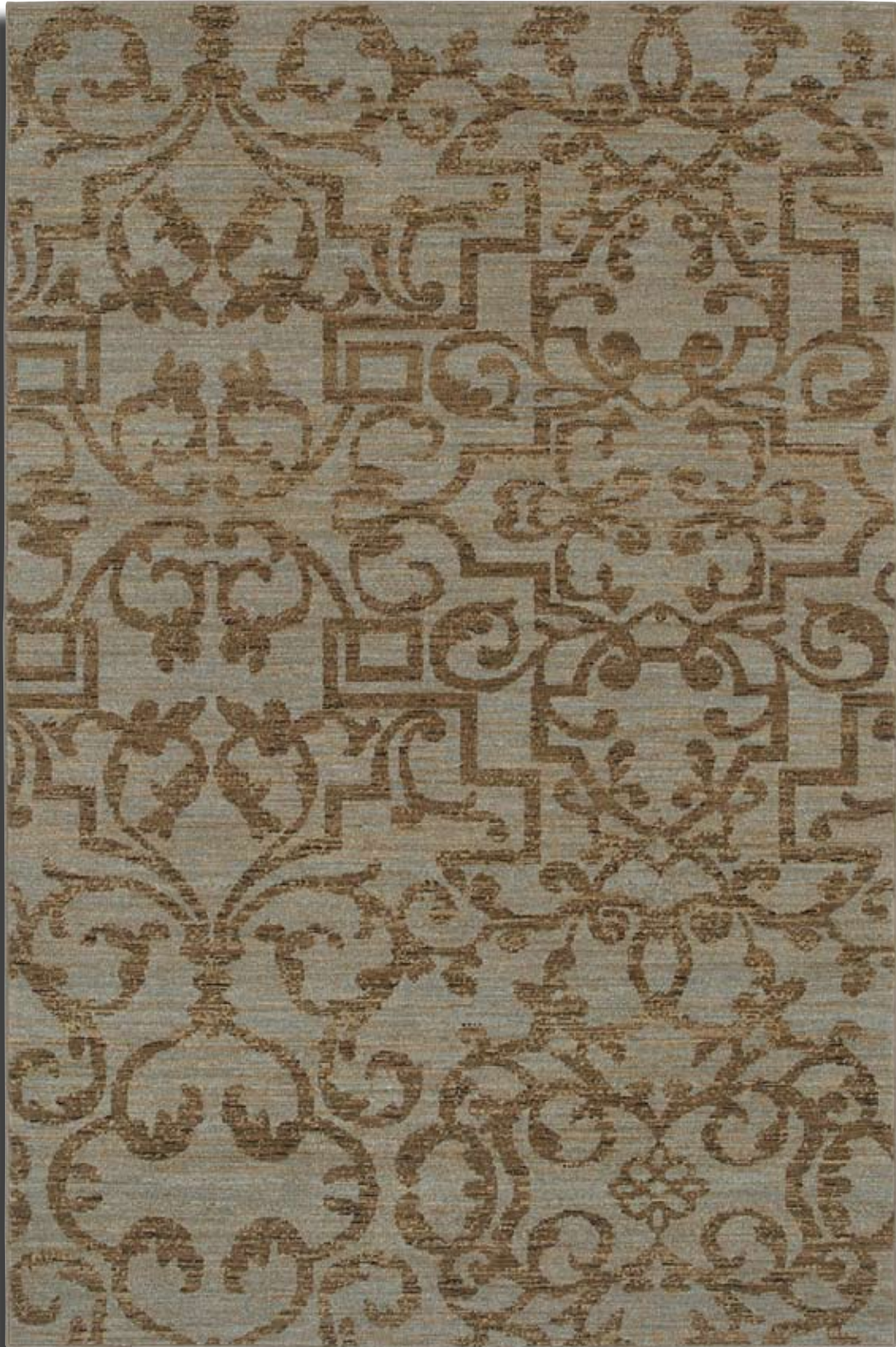
Woven in the U.S.A. of premium New Zealand worsted wool, our *Kismet - Ivory/Black* rug has a wonderfully soft hand and a durable construction. As practical as they are beautiful, rugs from the Sierra Mar collection provide decorating solutions with a look that is comfortable and casually elegant.

*Kismet - Ivory/Black* is color compatible with the following rugs from the Sierra Mar collection:

*35505-33011 Jakarta Batik - Ivory/Black*

*35505-33013 Marie-Louise - Ivory/Black*





© Karastan

SIERRA MAR™  
N° 35505-33016 FRENCH QUARTER - BLUESTONE

---

*Karastan*  
RUGS

SIERRA MAR™  
35505-33016 FRENCH QUARTER - BLUESTONE

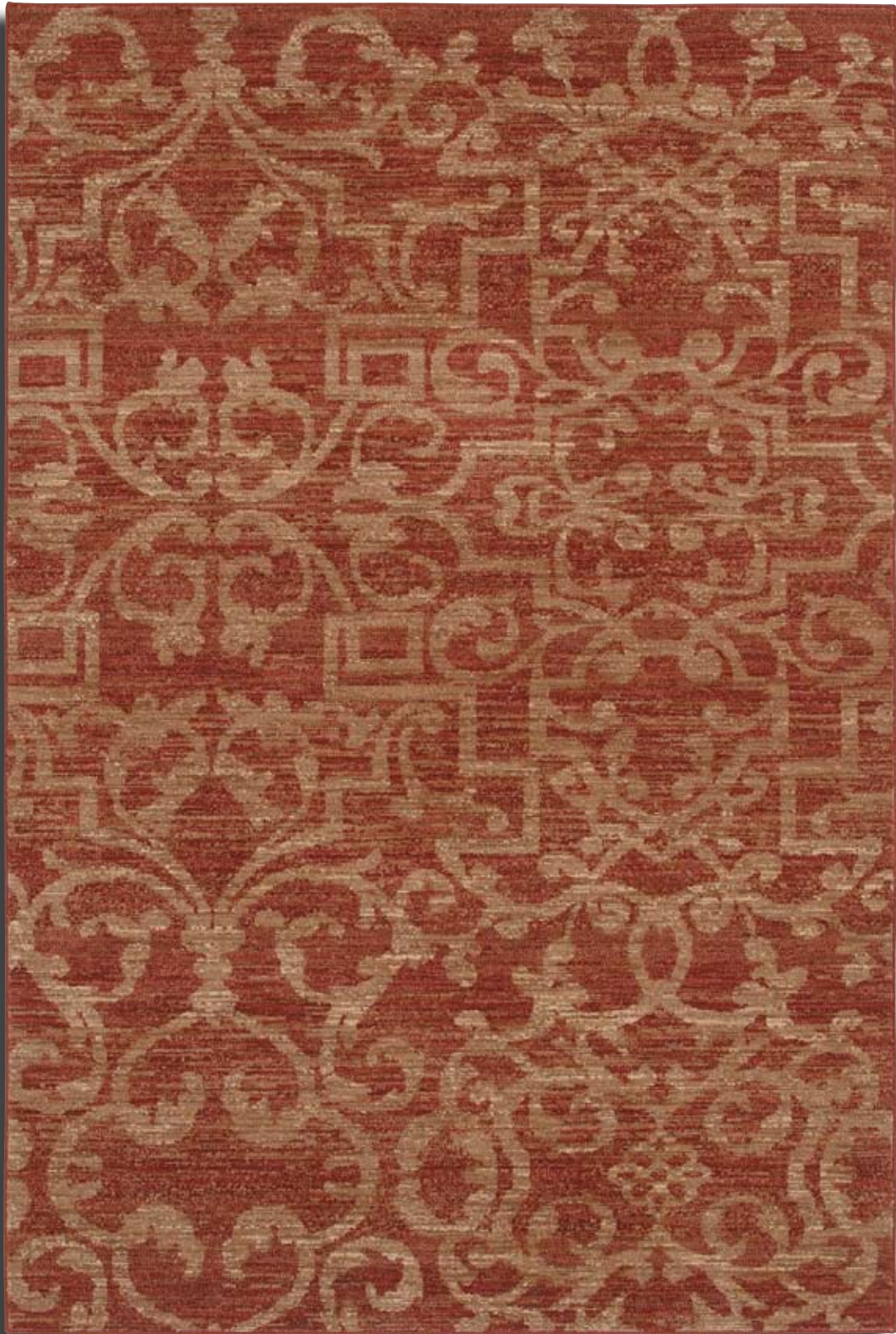
*Size shown: 5'6" x 8'3"*  
*Sizes Available: 2'5" x 4', 3'3" x 5'6", 5'6" x 8'3", 8' x 10', 8'6" x 11'6", 9'6" x 13'2"*  
*runners 2'5" x 8' and 2'5" x 12'*

Comfortable, weathered, easy to live with color is the signature style of the Sierra Mar collection; with relaxed patterns that work beautifully with both traditional and modern design. The use of specially twisted space-dyed yarns creates artful color 'stria' reminiscent of fine hand woven 'Peshawar' rugs.

*French Quarter - Bluestone* is a transitional design inspired by the ironwork gates and balconies of New Orleans. This graphic composition is softened with an organic visual texture rendered in a palette of soft browns, robin's egg blue and limestone.

Woven in the U.S.A. of premium New Zealand worsted wool, our *French Quarter - Bluestone* rug has a wonderfully soft hand and a durable construction. As practical as they are beautiful, rugs from the Sierra Mar collection provide decorating solutions with a look that is comfortable and casually elegant.





© Karastan

*SIERRA MAR™*  
*N° 35505-33017 FRENCH QUARTER - HENNA*

---

*Karastan*  
RUGS

# SIERRA MAR™

35505-33017 FRENCH QUARTER - HENNA

*Size shown: 5'6" x 8'3"*

*Sizes Available: 2'5" x 4', 3'3" x 5'6", 5'6" x 8'3", 8' x 10', 8'6" x 11'6", 9'6" x 13'2"  
runners 2'5" x 8' and 2'5" x 12'*

Comfortable, weathered, easy to live with color is the signature style of the Sierra Mar collection; with relaxed patterns that work beautifully with both traditional and modern design. The use of specially twisted space-dyed yarns creates artful color 'stria' reminiscent of fine hand woven 'Peshawar' rugs.

Our *French Quarter - Henna* is a transitional design inspired by the ironwork gates and balconies of New Orleans. This graphic composition is softened with an organic visual texture rendered in a palette of soft browns and henna red.

Woven in the U.S.A. of premium New Zealand worsted wool, our *French Quarter - Henna* rug has a wonderfully soft hand and a durable construction. As practical as they are beautiful, rugs from the Sierra Mar collection provide decorating solutions with a look that is comfortable and casually elegant.



## ENGLISH MANOR™

Comfortable, timeworn and elegant, the English country house is characteristically a retreat from the hustle and bustle of London life. English manors are homey showcases with sumptuous interiors, elaborate gardens and a sense of history. They beckon one to relax in style: to sip afternoon tea in the garden, to put your feet up and sink into a good book, to pursue leisurely entertainments such as horseback riding, painting or needlework.

The timeless patterns in our English Manor™ Collection offer relaxed elegance for everyday living. They bring the beauty and designs of nature indoors in graceful style. Plus their rich colors convey a classic heritage of warmth, fashion and beauty.

The pure New Zealand worsted wool yarns have been specially dyed to create a random stria, which is reminiscent of genuine antique rugs. 'English Manor' rugs are woven with a cotton foundation for strength and suppleness, undergo Karastan's patented Lustre-Wash™ process and are finished with a special 'antique look' fringe for easy care and maintenance.

*Karastan*  
RUGS



© Karastan

ENGLISH MANOR™  
N° 2120-501 WINDSOR

---

*Karastan*  
RUGS

# ENGLISH MANOR™

2120-501 WINDSOR

*Size shown: 8' x 10'5"*

*Sizes Available: 2'6" x 4', 2'6" x 8', 2'6" x 12', 2'9" x 5', 3'8" x 5', 5'7" x 7'11", 8' x 10'5",  
8'6" x 11'6" and 9'2" x 13' (See mill stock sheet for most current sizes)*

For centuries the English have known the virtues of a respite in the country. The Thames Valley, with its picturesque villages and close proximity to London, has long possessed great appeal for Britain's aristocracy.

Windsor Castle, in the southeastern corner of the valley, is the oldest continuously inhabited royal residence in Britain. Built by William the Conqueror in 1070, it has been a residence of kings and queens for more than 900 years.

Our timeless *Windsor* rug, taken from a classic Heriz pattern, exhibits the perfect symmetry and balance of this design - a testament to its ability to complement the decorating styles over the centuries. The versatile color palette includes red, indigo, ivory, yellow, caramel, deep terra-cotta, medium blue and soft green. Each of these colors has been specially dyed to achieve graduated shades of each hue on the wool yarns. The result is literally dozens of individual colors woven to simulate the stria effect of aged vegetable dyes.

Woven in the U.S.A. in a luxuriously soft construction of premium worsted New Zealand wool, the *Windsor* design mixes beautifully with the following patterns in the English Manor Collection:

*2120-502 Cambridge*

*2120-503 Devonshire*

*2120-504 Hampton Court*

*2120-506 Brighton*





© Karastan

ENGLISH MANOR™  
N° 2120-502 CAMBRIDGE

*Karastan*  
RUGS

# ENGLISH MANOR™

2120-502 CAMBRIDGE

*Size shown: 8' x 10'5"*

*Sizes Available: 2'6" x 4', 2'6" x 8', 2'6" x 12', 2'9" x 5', 3'8" x 5', 5'7" x 7'11", 8' x 10'5",  
8'6" x 11'6" and 9'2" x 13'*

There have been students at Cambridge since the 11th century. Numerous colleges are located here including Cambridge University, King's College, St. John's College and Queens' College.

*Cambridge* trades in both ideas and agricultural products as the region's thriving market center. Tourists relax and students study on The Backs, the gardens that run from the back of the old colleges to the edge of the gently flowing River Cam. On the river, students lean on long poles, guiding flat-bottomed river craft called punts while their passengers enjoy a lazy afternoon "punting on the Cam."

The timeless beauty of our *Cambridge* rug brings warmth to any decor incorporating a rich collection of blooms and interconnected vinery. The versatile color palette includes red, indigo, ivory, yellow, caramel, deep terra-cotta, medium blue and soft green. Each of these colors has been specially dyed to achieve graduated shades of each hue on the wool yarns. The result is literally dozens of individual colors woven to simulate the stria effect of aged vegetable dyes.

*Cambridge* is woven in the U.S.A. of premium worsted New Zealand wool. The *Cambridge* design mixes beautifully with the following patterns in the English Manor Collection:

*2120-501 Windsor*

*2120-503 Devonshire*

*2120-504 Hampton Court*

*2120-506 Brighton*





© Karastan

ENGLISH MANOR™  
N° 2120-504 HAMPTON COURT

*Karastan*  
RUGS

# ENGLISH MANOR™

## 2120-504 HAMPTON COURT

*Size shown: 8' x 10'5"*

*Sizes Available: 2'6" x 4', 2'6" x 8', 2'6" x 12', 2'9" x 5', 3'8" x 5', 5'7" x 7'11", 8' x 10'5",  
8'6" x 11'6" and 9'2" x 13'*

Tudor gardeners adorned their great houses with knot gardens, in which plants were divided into patterns by low boxwood or lavender hedges. Both Henry VIII and William and Mary redesigned the knot and fountain gardens at Hampton Court Palace, the royal riverside residence nestled on the River Thames. Located an accessible 20 miles from London, this region of southeastern England is today the home of those who aspire to the same values as the Tudor gentry: elegant country living.

The design of our *Hampton Court* rug is as precisely planned as the garden at Hampton Court Palace. Inspired by a magnificent 16th century carpet; Quatrefoil medallions are the focal point; connected by small roundels and surrounded by flowering branches. The medallions are filled with elaborate arrangements of flowering branches, peacocks, vinery and rosettes.

*Hampton Court* is woven in rich saturated shades that offer timeless beauty and design versatility. The versatile color palette includes red, indigo, ivory, yellow, caramel, deep terra cotta, medium blue and soft green. Each of these colors has been specially dyed to achieve graduated shades of each hue on the wool yarns. The result is literally dozens of individual colors woven to simulate the stria effect of aged vegetable dyes. Woven in the U.S.A. of premium worsted New Zealand wool, *Hampton Court* makes a regal companion with the following patterns in the English Manor Collection:

*2120-502 Cambridge*

*2120-505 Stratford*

*2120-506 Brighton*





© Karastan

*ENGLISH MANOR™*  
*N° 2120-505 STRATFORD*

*Karastan*  
RUGS

# ENGLISH MANOR™

2120-505 STRATFORD

*Size shown: 8' x 10'5"*

*Sizes Available: 2'6" x 4', 2'6" x 8', 2'6" x 12', 2'9" x 5', 3'8" x 5', 5'7" x 7'11', 8' x 10'5", 8'6" x 11'6", 9'2" x 13'  
4'11" round and 7'10" round*

Playwright William Shakespeare single-handedly put the small Tudor market town of Stratford-upon-Avon on the map. Outside of London, it is the most visited tourist attraction in England, a mecca for the Bard's admirers. Stratford-upon-Avon, which hugs the west bank of the tree-fringed River Avon in the heart of the midlands, is the home of classic literature.

When we were designed our *Stratford* rug, we too wanted to create a timeless classic. Based on an Antique Mahal carpet design, this rug contains a cast of elaborate flowers, lively leaves, tender vines, vase motifs and palmettes on a soft ivory ground.

The versatile color palette includes red, indigo, ivory, yellow, caramel, deep terra cotta, medium blue and soft green. Each of these colors has been specially dyed to achieve graduated shades of each hue on the wool yarns. The result is literally dozens of individual colors woven to simulate the stria effect of aged vegetable dyes. Woven in the U.S.A. of premium worsted New Zealand wool, this classic design leaves a lasting impression, especially when mixed with the following patterns in the English Manor Collection:

*2120-501 Windsor*

*2120-502 Cambridge*

*2120-504 Hampton Court*





© Karastan

ENGLISH MANOR™  
N° 2120-505 STRATFORD

---

*Karastan*  
RUGS

# ENGLISH MANOR™

2120-505 STRATFORD

*Size shown: 7'10" round*

*Sizes Available: 2'6" x 4', 2'6" x 8', 2'6" x 12', 2'9" x 5', 3'8" x 5', 5'7" x 7'11", 8' x 10'5", 8'6" x 11'6", 9'2" x 13'4'11" round and 7'10" round*

Playwright William Shakespeare single-handedly put the small Tudor market town of Stratford-upon-Avon on the map. Outside of London, it is the most visited tourist attraction in England, a mecca for the Bard's admirers. Stratford-upon-Avon, which hugs the west bank of the tree-fringed River Avon in the heart of the midlands, is the home of classic literature.

When we were designed our *Stratford* rug, we too wanted to create a timeless classic. Based on an Antique Mahal carpet design, this rug contains a cast of elaborate flowers, lively leaves, tender vines, vase motifs and palmettes on a soft ivory ground.

The versatile color palette includes red, indigo, ivory, yellow, caramel, deep terra cotta, medium blue and soft green. Each of these colors has been specially dyed to achieve graduated shades of each hue on the wool yarns. The result is literally dozens of individual colors woven to simulate the stria effect of aged vegetable dyes. Woven in the U.S.A. of premium worsted New Zealand wool, this classic design leaves a lasting impression, especially when mixed with the following patterns in the English Manor Collection:

*2120-501 Windsor*

*2120-502 Cambridge*

*2120-504 Hampton Court*





© Karastan

*ENGLISH MANOR™*  
*Nº 2120-506 BRIGHTON*

---

*Karastan*  
RUGS

# ENGLISH MANOR™

2120-506 BRIGHTON

*Size shown: 8' x 10'5"*

*Sizes Available: 2'6" x 4', 2'6" x 8', 2'6" x 12', 2'9" x 5', 3'8" x 5', 5'7" x 7'11', 8' x 10'5"  
8'6" x 11'6" and 9'2" x 13'*

They come here to laugh and love, to distract themselves or someone else, to rest and renew. This is Brighton, the nearest seacoast resort to London and the place where the Prince Regent came to play. His Royal Pavilion, a magnificent Oriental palace and playground designed by John Nash, symbolizes the refined relaxation found in Brighton.

Our *Brighton* rug sets a tone of elegant indulgence with a stately combination of lush blossoms, orderly palmettes, and lattice stems and vines. *Brighton* is a modern version of a Herat or Feraghan design, which is known for its signature repeating pattern and joyful intricacy.

The versatile color palette includes yellow, caramel, deep terra cotta, red, indigo, medium blue, ivory, and soft green. Each of these colors has been specially dyed to achieve graduated shades of each hue on the wool yarns. The result is literally dozens of individual colors woven to simulate the stria effect of aged vegetal dyes.

Woven in the U.S.A. in a luxuriously soft construction of premium worsted New Zealand wool, the *Brighton* design mixes beautifully with the following patterns in the English Manor Collection:

*2120-501 Windsor*

*2120-504 Hampton Court*





© Karastan

ENGLISH MANOR™  
N° 2120-510 WILLIAM MORRIS RED

*Karastan*  
RUGS

# ENGLISH MANOR™

## 2120-510 WILLIAM MORRIS RED

*Size shown: 5'7" x 7'11"*

*Sizes Available: 2'6" x 4', 2'6" x 8', 2'6" x 12', 2'9" x 5', 3'8" x 5', 5'7" x 7'11", 8' x 10'5", 8'6" x 11'6", 9'2" x 13'  
4'11" round and 7'10" round*

In the late 1800's, the Arts and Crafts Movement swept through England and America. Architects and designers alike created environments with a new perspective, incorporating furniture, wallpaper, textiles, and carpets into highly decorative interior spaces. Morris & Co., influenced greatly by its chief partner William Morris, became famous for intricate floral and foliage motifs inspired by both Persian design and vintage European textiles. This dramatic homage to the Wm. Morris style is adapted from Morris' vine and pomegranate motifs, with an acanthus leaf border inspired by a Morris & Co. tapestry.

The versatile color palette of our *William Morris Red* includes accents of deep indigo blue, medium blue, soft green, terra cotta, caramel, saffron yellow and ivory on a soft, warm red ground. Each of these colors has been specially dyed to achieve graduated shades of each hue on the wool yarns. The result when woven is a visual texture and depth of color that simulates the effect of aged vegetable dyes. And because the same color palette is used throughout the collection, finding coordinating rugs is easy.

Rugs in the English Manor™ Collection are woven in the U.S.A. of premium New Zealand worsted wool, and finished with Karastan's patented Lustre-Wash™ making them exceptionally soft and durable. As practical as they are beautiful, they provide decorating solutions with a look that is comfortable, timeworn and casually elegant.





© Karastan

*ENGLISH MANOR™*  
*N° 2120-510 WILLIAM MORRIS RED*

---

*Karastan*  
RUGS

# ENGLISH MANOR™

## 2120-510 WILLIAM MORRIS RED

*Size shown: 7'10" round*

*Sizes Available: 2'6" x 4', 2'6" x 8', 2'6" x 12', 2'9" x 5', 3'8" x 5', 5'7" x 7'11", 8' x 10'5", 8'6" x 11'6", 9'2" x 13'  
4'11" round and 7'10" round*

In the late 1800's, the Arts and Crafts Movement swept through England and America. Architects and designers alike created environments with a new perspective, incorporating furniture, wallpaper, textiles, and carpets into highly decorative interior spaces. Morris & Co., influenced greatly by its chief partner William Morris, became famous for intricate floral and foliage motifs inspired by both Persian design and vintage European textiles. This dramatic homage to the Wm. Morris style is adapted from Morris' vine and pomegranate motifs, with an acanthus leaf border inspired by a Morris & Co. tapestry.

The versatile color palette of our *William Morris Red* includes accents of deep indigo blue, medium blue, soft green, terra cotta, caramel, saffron yellow and ivory on a soft, warm red ground. Each of these colors has been specially dyed to achieve graduated shades of each hue on the wool yarns. The result when woven is a visual texture and depth of color that simulates the effect of aged vegetable dyes. And because the same color palette is used throughout the collection, finding coordinating rugs is easy.

Rugs in the English Manor™ Collection are woven in the U.S.A. of premium New Zealand worsted wool, and finished with Karastan's patented Lustre-Wash™ making them exceptionally soft and durable. As practical as they are beautiful, they provide decorating solutions with a look that is comfortable, timeworn and casually elegant.





© Karastan

*ENGLISH MANOR™*  
*N° 2120-513 STRATFORD MAHOGANY*

*Karastan*  
RUGS

# ENGLISH MANOR™

## 2120-513 STRATFORD MAHOGANY

*Size shown: 5'7" x 7'11"*

*Sizes Available: 2'6" x 4', 2'6" x 8', 2'6" x 12', 2'9" x 5', 3'8" x 5', 5'7" x 7'11", 8' x 10'5", 8'6" x 11'6"*

Relaxed elegance for everyday living is the theme of the English Manor™ rug collection - offering timeless, classic styling with a fresh attitude.

Based on an Antique Mahal carpet design, our *Stratford Mahogany* rug is composed of relaxed floral and vine motifs interspersed with palmettes in an airy and open structure. Casual, yet refined, this highly versatile pattern with colors of rich mahogany brown, black, honey gold and quarry blue is well matched to leather upholstery and wood accents. The "antiqued quality" of the border design lends an elegant note.

Rugs in the English Manor™ Collection are woven in the U.S.A. of premium New Zealand worsted wool, and finished with Karastan's patented Lustre-Wash™ making them exceptionally soft and durable. As practical as they are beautiful, they provide decorating solutions with a look that is comfortable, timeworn and casually elegant.





© Karastan

*ENGLISH MANOR™*  
*N° 2120-514 WILLIAM MORRIS BLACK*

*Karastan*  
RUGS

# ENGLISH MANOR™

## 2120-514 WILLIAM MORRIS BLACK

*Size shown: 5'7" x 7'11"*

*Sizes Available: 2'6" x 4', 2'6" x 8', 2'6" x 12', 2'9" x 5', 3'8" x 5', 5'7" x 7'11", 8' x 10'5", 8'6" x 11'6"*

In the late 1800's, the Arts and Crafts Movement swept through England and America. Architects and designers alike created environments with a new perspective, incorporating furniture, wallpaper, textiles, and carpets into highly decorative interior spaces. Morris & Co., influenced greatly by its chief partner William Morris, became famous for intricate floral and foliage motifs inspired by both Persian design and vintage European textiles. This dramatic homage to the Wm. Morris style is adapted from Morris' vine and pomegranate motifs, with an acanthus leaf border inspired by a Morris & Co. tapestry.

The dense, rich black used in our *William Morris Black* has a velvety quality that conveys a dressier attitude. Accent colors include medium blue, mahogany brown, caramel and rich golden hues.

Rugs in the English Manor™ Collection are woven in the U.S.A. of premium New Zealand worsted wool, and finished with Karastan's patented Lustre-Wash™ making them exceptionally soft and durable. As practical as they are beautiful, they provide decorating solutions with a look that is comfortable, timeworn and casually elegant.





© Karastan

*ENGLISH MANOR™*  
*N° 2120-515 CANTERBURY*

---

*Karastan*  
RUGS

# ENGLISH MANOR™

2120-515 CANTERBURY

*Size shown: 5'7" x 7'11"*

*Sizes Available: 2'6" x 4', 2'9" x 5', 3'8" x 5', 5'7" x 7'11", 8' x 10'5", 8'6" x 11'6",  
2'6" x 8' runner and 2'6" x 12' runner*

Our elegant *Canterbury* pattern features a lush open field with a filigree center medallion. Soft red and indigo blue are accented with medium blue, soft green, maize yellow, caramel and deep terra-cotta accents. Each of these colors has been specially dyed to achieve graduated shades of each hue on the wool yarns. The result is literally dozens of individual colors woven to simulate the stria effect of aged natural dyes.

As practical as they are beautiful, rugs from the English Manor Collection provide decorating solutions with a look that is comfortable, time-worn and casually elegant.

Woven in the U.S.A. in a luxuriously soft construction of premium worsted wool, the *Canterbury* design coordinates beautifully with the following patterns in the English Manor Collection:

*2120-502 Cambridge*

*2120-504 Hampton Court*

*2120-505 Stratford*

*2120-516 Nottingham*





© Karastan

ENGLISH MANOR™  
N° 2120-516 NOTTINGHAM

*Karastan*  
RUGS

# ENGLISH MANOR™

2120-516 NOTTINGHAM

*Size shown: 5'7" x 7'11"*

*Sizes Available: 2'0" x 4', 2'9" x 5', 3'8" x 5', 5'7" x 7'11", 8' x 10'5", 8'0" x 11'0",  
2'0" x 8' runner and 2'0" x 12' runner*

Casual, yet refined, the imaginative patchwork of classic Persian motifs in our *Nottingham* rug pattern lends a transitional flair to traditional design and offers timeless, classic styling with a fresh attitude. Indigo blue, red and maize yellow are accented with medium blue, soft green, caramel and deep terra-cotta accents. Each of these colors has been specially dyed to achieve graduated shades of each hue on the wool yarns. The result is literally dozens of individual colors woven to simulate the stria effect of aged natural dyes.

*Nottingham* is woven in the U.S.A. in a luxuriously soft construction of premium worsted New Zealand wool and finished with Karastan's patented Lustre-Wash™ making it exceptionally soft and durable. As practical as they are beautiful, rugs from the English Manor Collection provide decorating solutions with a look that is comfortable, time-worn and casually elegant.

The versatility of our *Nottingham* rug pattern is unmatched - coordinating beautifully with the following patterns in the English Manor Collection:

*2120-502 Cambridge*

*2120-504 Hampton Court*

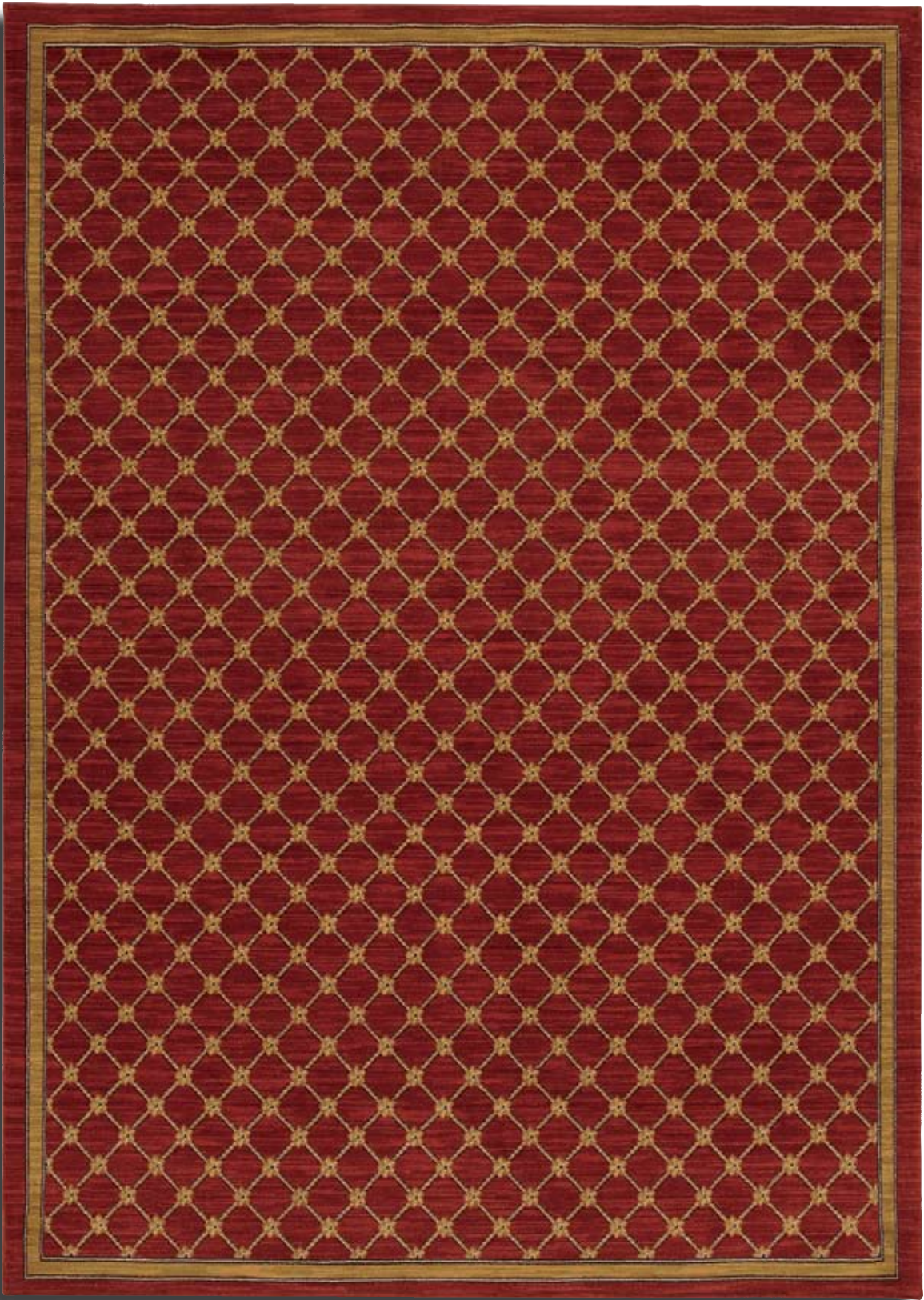
*2120-505 Stratford*

*2120-506 Brighton*

*2120-515 Canterbury*

*2120-517 Coventry Trellis - Red*





© Karastan

*ENGLISH MANOR™*  
*Nº 2120-517 COVENTRY TRELLIS - RED*

---

*Karastan*  
RUGS

# ENGLISH MANOR™

## 2120-517 COVENTRY TRELLIS - RED

*Size shown: 5'7" x 7'11"*

*Sizes Available: 2'6" x 4', 2'9" x 5', 3'8" x 5', 5'7" x 7'11", 8' x 10'5",  
8'6" x 11'6", 2'6" x 8' runner and 2'6" x 12' runner (also available as a continuous runner)*

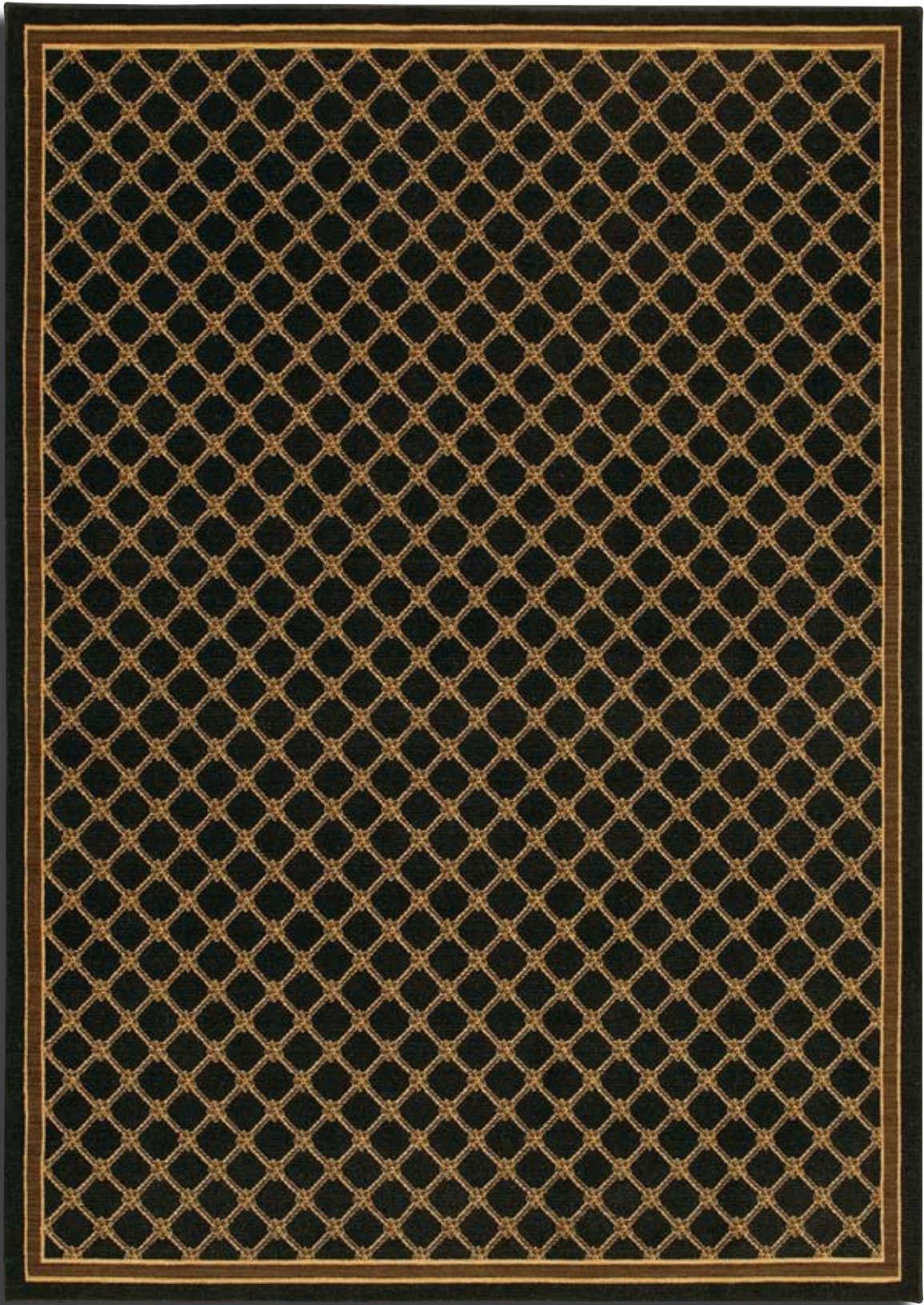
The all-over lattice design of our *Coventry Trellis - Red* pattern offers a classic, tailored decorating companion that features the subtle stria of the yarns. A special dye technique penetrates the wool yarns with graduated shades of each hue so that the woven colors simulate the effects of aged natural dyes.

As practical as they are beautiful, rugs from the English Manor Collection provide decorating solutions with a look that is comfortable, time-worn and casually elegant.

Woven in the U.S.A. in a luxuriously soft construction of premium worsted wool, the *Coventry Trellis - Red* design coordinates beautifully with the following patterns in the English Manor Collection:

*2120-502 Cambridge*  
*2120-504 Hampton Court*  
*2120-505 Stratford*  
*2120-515 Canterbury*  
*2120-516 Nottingham*





© Karastan

*ENGLISH MANOR™*  
*N° 2120-530 COVENTRY TRELLIS - BLACK*

---

*Karastan*  
RUGS

# ENGLISH MANOR™

## 2120-530 COVENTRY TRELLIS - BLACK

*Size shown: 5'7" x 7'11"*

*Sizes Available: 2'6" x 4', 2'9" x 5', 3'8" x 5', 5'7" x 7'11", 8' x 10'5", 8'6" x 11'6",  
2'6" x 8' runner and 2'6" x 12' runner (also available as a continuous runner)*

The all-over lattice design of our *Coventry Trellis - Black* pattern offers a classic decorating companion that features a tailored, yet rich foundation for a wide variety of decorating styles.

As practical as they are beautiful, rugs from the English Manor Collection provide decorating solutions with a look that is comfortable, time-worn and casually elegant.

Woven in the U.S.A. in a luxuriously soft construction of premium worsted wool, the *Coventry Trellis - Black* design makes an elegant coordinate to pattern 2120-514 *William Morris - Black*, also from the English Manor Collection.





© Karastan

*ENGLISH MANOR™*  
*N° 2120-530 SOMERSET LANE - BLUE*

---

*Karastan*  
RUGS

ENGLISH MANOR™  
2120-539 SOMERSET LANE - BLUE

*Size shown: 5'7" x 7'11"*

*Sizes Available: 2'6" x 4', 2'9" x 5', 3'8" x 5', 5'7" x 7'11", 8' x 10'5",  
8'6" x 11'6", 2'6" x 8' runner and 2'6" x 12' runner*

Our *Somerset Lane* pattern has the classic appeal just right for today's relaxed, traditional styling with a look that is comfortable and casually elegant. The blue and ivory color palette is timeless and the arabesque vines covering the center field offer a delicate counterbalance to the intricate filigree border.

Each of the colors has been specially dyed to achieve a soft stria effect when woven. The result is a visual texture and depth of color that simulates the effect of aged natural dyes.

*Somerset Lane Blue* is woven in the U.S.A. in a luxuriously soft construction of premium worsted New Zealand wool and finished with Karastan's patented Lustre-Wash™ making it exceptionally soft and durable. As practical as they are beautiful, rugs from the English Manor Collection provide decorating solutions with a look that is comfortable, time-worn and casually elegant.





© Karastan

*ENGLISH MANOR™*  
*N° 2120-540 SOMERSET LANE - IVORY/BLUE*

---

*Karastan*  
RUGS

# ENGLISH MANOR™

2120-540 SOMERSET LANE - IVORY/BLUE

*Size shown: 5'7" x 7'11"*

*Sizes Available: 2'6" x 4', 2'9" x 5', 3'8" x 5', 5'7" x 7'11", 8' x 10'5",  
8'6" x 11'6", 2'6" x 8' runner and 2'6" x 12' runner*

Our *Somerset Lane* pattern has the classic appeal just right for today's relaxed, traditional styling with a look that is comfortable and casually elegant. The blue and ivory color palette is timeless and the arabesque vines covering the center field offer a delicate counterbalance to the intricate filigree border.

Each of the colors has been specially dyed to achieve a soft stria effect when woven. The result is a visual texture and depth of color that simulates the effect of aged natural dyes.

*Somerset Lane Ivory/Blue* is woven in the U.S.A. in a luxuriously soft construction of premium worsted New Zealand wool and finished with Karastan's patented Lustre-Wash™ making it exceptionally soft and durable. As practical as they are beautiful, rugs from the English Manor Collection provide decorating solutions with a look that is comfortable, time-worn and casually elegant.





© Karastan

ENGLISH MANOR™  
N° 2120-588 MANDARIN

*Karastan*  
RUGS

# ENGLISH MANOR™

2120-588 MANDARIN

*Size shown: 5'7" x 7'11"*

*Sizes Available: 2'6" x 4', 2'9" x 5', 3'8" x 5', 5'7" x 7'11", 8' x 10'5",  
8'6" x 11'6", 2'6" x 8' runner and 2'6" x 12' runner*

The pattern of our *Mandarin* rug was inspired by an antique Chinese carpet of exceptional beauty. A palette of saffron yellow, cinnabar, and porcelain blues makes a fresh statement that works with both classic and contemporary interiors.

More than just beautiful, our *Mandarin* rug is loaded with auspicious symbolism. In the field are stylized 'bat' motifs – a symbol of good fortune, luck, and happiness; and the "shou" symbol in the medallion centers represents longevity. The colors have meaning as well. Yellows along with our cinnabar and reddish brown are "earth" colors and make a perfect choice for living rooms or any room that is the hub of the house.

Woven in the U.S.A. of premium New Zealand worsted wool, and finished with Karastan's patented Lustre-Wash™, our *Mandarin* rug has a wonderfully soft hand and a durable construction. As practical as they are beautiful, rugs from the English Manor Collection provide decorating solutions with a look that is comfortable, time-worn, and casually elegant.

*Mandarin's* colors compliment the following patterns in the English Manor Collection:

*2120-506 Brighton*

*2120-539 Somerset Lane-Blue*



## WOVEN IMPRESSIONS®

Woven Impressions® is an extremely versatile group of fashion forward transitional rugs in simple 'fabric like' tonal patterns. The patterns and colorways not only coordinate together, they also work beautifully with many Karastan Oriental design rugs.

Woven in the U.S.A., the premium quality fully worsted New Zealand wool yarns have been specially dyed to create a random 'stria' which is reminiscent of genuine antique rugs. Woven Impressions® rugs are finished with Karastan's patented Lustre-Wash™ process to impart a rich patina and soft hand.

*Karastan*  
RUGS



© Karastan

WOVEN IMPRESSIONS® COLLECTION  
BEADED CURTAIN

N° 35502-11113 CURRY

N° 35502-12112 CHILI PEPPER

N° 35502-13111 INDIGO

N° 35502-14114 BLACK

---

*Karastan*  
RUGS

# WOVEN IMPRESSIONS® COLLECTION

BEADED CURTAIN

35502-11113 CURRY

35502-12112 CHILI PEPPER

35502-13111 INDIGO

35502-14114 BLACK

*Sizes Available: 2'6" x 4', 2'9" x 5', 3'8" x 5', 5'7" x 7'11", 8' x 10'5", 8'6" x 11'6", 2'6" x 8' runner and 2'6" x 12' runner*

Woven Impressions® is an extremely versatile group of fashion forward transitional rugs in simple textile inspired tonal patterns. The patterns and colorways not only coordinate, they also work beautifully with many Karastan oriental design rugs.

*Beaded Curtain* is a fascinating organic stripe softened by the addition of what could be interpreted as beads, buds or berries. It works as a geometric, but with a softer look.

Rugs from the Woven Impressions® collection are meticulously woven in the U.S.A. of premium New Zealand worsted wool and finished with Karastan's patented Lustre-Wash™ making them exceptionally soft and durable.





© Karastan

WOVEN IMPRESSIONS® COLLECTION  
DIAMOND IKAT

N° 35502-21141 CURRY

N° 35502-22159 CHILI PEPPER

N° 35502-23135 INDIGO

N° 35502-24116 ESPRESSO

---

*Karastan*  
RUGS

# WOVEN IMPRESSIONS® COLLECTION

DIAMOND IKAT

35502-21141 CURRY

35502-22159 CHILI PEPPER

35502-23135 INDIGO

35502-24116 ESPRESSO

*Sizes Available: 2'6" x 4', 2'9" x 5', 3'8" x 5', 5'7" x 7'11", 8' x 10'5", 8'6" x 11'6", 2'6" x 8' runner and 2'6" x 12' runner*

Woven Impressions® is an extremely versatile group of fashion forward transitional rugs in simple textile inspired tonal patterns. The patterns and colorways not only coordinate, they also work beautifully with many Karastan oriental design rugs.

*Diamond Ikat* takes its cues from the distinctive Indonesian weaving technique that is one of today's most fashionable statements in home furnishings and couture. The simple edge treatment lends a clean contemporary look, while the tonal colorations soften the design.

Rugs from the Woven Impressions® collection are meticulously woven in the U.S.A. of premium New Zealand worsted wool and finished with Karastan's patented Lustre-Wash™ making them exceptionally soft and durable.





© Karastan

*WOVEN IMPRESSIONS® COLLECTION*  
*VINTAGE BATIK*

*N° 35502-31142 CURRY*

*N° 35502-32118 CHILI PEPPER*

*N° 35502-33117 INDIGO*

*N° 35502-34140 ESPRESSO*

---

*Karastan*  
RUGS

# WOVEN IMPRESSIONS® COLLECTION

VINTAGE BATIK

35502-31142 CURRY

35502-32118 CHILI PEPPER

35502-33117 INDIGO

35502-34140 ESPRESSO

*Sizes Available: 2'0" x 4', 2'0" x 5', 3'8" x 5', 5'7" x 7'11", 8' x 10'5", 8'6" x 11'6", 2'0" x 8' runner and 2'0" x 12' runner*

Woven Impressions® is an extremely versatile group of fashion forward transitional rugs in simple textile inspired tonal patterns. The patterns and colorways not only coordinate, they also work beautifully with many Karastan oriental design rugs.

*Diamond Ikat* is a subtle transitional design that combines tonal color with a lavish degree of visual texture, inspired by the richness of hand-dyed resist printed cloth. Its fabric-like patterning and simple edge treatment give this a clean contemporary look.

Rugs from the Woven Impressions® collection are meticulously woven in the U.S.A. of premium New Zealand worsted wool and finished with Karastan's patented Lustre-Wash™ making them exceptionally soft and durable.



## CASUAL CONCEPTS™

Casual Concepts™ offers simple decorating solutions in a kaleidoscope of colors, textures and pattern - all with one aim in mind - providing easy to live with options for expressing personal style. Whether your taste is casual or contemporary, you'll find uncomplicated choices that are easy to decorate with and easy to care for.

Casual Concepts™ - simple solutions, great style.

*Karastan*<sup>®</sup>  
RUGS



© Karastan

*CASUAL CONCEPTS™ COLLECTION*

*CABO DEL SOL™ RUGS*

*Nº 385-29543 CHRIS CRAFT*

*Nº 385-29435 BEACH UMBRELLA    Nº 385-29924 HARBOR BLUE*

*Nº 385-29773 SEASHORE    Nº 385-29916 FIESTA*

---

*Karastan*  
RUGS

# CASUAL CONCEPTS™

CABO DEL SOL™ RUGS

385-29543 CHRIS CRAFT

385-29435 BEACH UMBRELLA

385-29773 SEASHORE

385-29924 HARBOR BLUE

385-29916 FIESTA

*Sizes Available: 3'0" x 5'0", 5'0" x 8'0", 8'3" x 11'0"*

Fresh, crisp cabana inspired stripes of our *Cabo Del Sol™* rugs make an important style statement for any room. The festive color palette ranges from sunny yellow (Beach Umbrella), to soft green (Seashore), to nautical blues (Harbor Blue), to the sporty combinations of red/blue (Fiesta) and red/coffee (Chris Craft). Woven in the USA, our strong Karaloc loop-pile construction and luxurious New Zealand wool give these rugs a combination of touchable softness and bounce back stamina that makes them a great choice for active households.

*Cabo Del Sol™* rugs have coordinating serging on all four sides for a crisp tailored look and easy maintenance.

*Note - in sizes 3'0" x 5'0" and 5'0" x 8'0" the stripes run vertically, and in size 8'3" x 11'0" the stripes run horizontally.*





*CASUAL CONCEPTS™ COLLECTION  
FRENCH CHECK™ RUGS*

© Karastan

*N° 357-29529 COFFEE CHECK*

*N° 357-29424 YELLOW CHECK*

*N° 357-29917 BLUE CHECK*

*N° 357-29773 GREEN CHECK*

*N° 357-29030 RED CHECK*

---

*Karastan*  
RUGS

# CASUAL CONCEPTS™

## FRENCH CHECK™ RUGS

357-29529 COFFEE CHECK

357-29424 YELLOW CHECK

357-29773 GREEN CHECK

357-29917 BLUE CHECK

357-29030 RED CHECK

*Sizes Available: 3'8" x 5'11", 5'8" x 8'9", 8'3" x 11'8"*

Now, our popular *French Check* broadloom pattern is available as cut size rugs...and these fresh versatile colors are chic in any setting. Woven in the USA, our strong Karaloc loop-pile construction and luxurious New Zealand wool give these rugs a combination of touchable softness and bounce back stamina that makes them a great choice for active households.

*French Check* rugs are cut on the check and have coordinating serging on all four sides for a crisp tailored look and easy maintenance.





© Karastan

*EXOTICS™*  
*N° 358-45056 MAJESTIC LEOPARD*

---

*Karastan*  
RUGS

# EXOTICS™

358-45056 MAJESTIC LEOPARD

*Size shown: 6' x 9'*

*Sizes Available: 3' x 5', 4' x 6', 6' x 9', 8'2" x 11'6"*

Exotic Rugs capture nature's true spirit of the wild, and like the animals that inspired these patterns, demonstrate a breathtaking union of beauty and performance.

*Majestic Leopard*, one of the most regal of the big cats, is interpreted with a bold graphic quality. Leopards' spots of brown and black against a neutral ground are printed with rich deeply penetrated durable color on our tough Karalon nylon base.

The pattern repeat of 36" w and 36" l with a vertical half drop is pleasingly centered on each size, and rugs are serged on all four sides for a clean tailored look.

**Karalon™**  
a premium Karastan fiber



© Karastan

*EXOTICS™*  
*N° 358-45054 MYSTICAL ZEBRA*

---

*Karastan*  
RUGS

EXOTICS™  
358-45054 MYSTICAL ZEBRA

*Size shown: 6' x 9'*

*Sizes Available: 3' x 5', 4' x 6', 6' x 9', 8'2" x 11'6"*

Exotic Rugs capture nature's true spirit of the wild, and like the animals that inspired these patterns, demonstrate a breathtaking union of beauty and performance.

*Mystical Zebra*, a thoroughly modern interpretation, is printed with rich deeply penetrated durable color on our tough Karalon nylon base in dark chocolate on a field of crème.

The pattern repeat of 36" w and 36" l with a vertical half drop is pleasingly centered on each size, and rugs are serged on all four sides for a clean graphic look.

**Karalon™**  
a premium Karastan fiber

# ARTWORKS™

Fresh and styled for today's new living, the Artworks™ collection of hand-made rugs offers statement making designs in richly composed colors. Throughout the collection, elegant combinations and a beautiful array of patterning is enhanced by variations in fiber, yarn type and surface texture - taking full advantage of the variety of techniques available in this hand crafted construction.

STUDIO®  
*Karastan*



© Karastan

ARTWORKS™  
N° 74200-210 BISTRO

---

STUDIO *Karastan*

# ARTWORKS™

## 74200-210 BISTRO

*Size shown: 5' x 8'*

*Sizes Available: 3'6" x 5'6", 5' x 8', 8' x 10', and 8'6" x 11'6"*

Fresh and styled for today's new living, the Artworks collection of hand made rugs offers statement-making designs in richly composed colors. Throughout the collection, elegant combinations and a beautiful array of patterning is enhanced by variations in fiber, yarn type and surface texture - taking full advantage of the variety of techniques available in this hand crafted construction.

Cheerful and casual, our *Bistro* rug pattern provides a lovely solution for any area that needs a sunny shot of color. Maize yellow, provincial red, Mediterranean blues, terra-cotta, rattan and cedar combine in an artful patchwork of calico floral patterning. Surface texture and dimension are distinguished by the contrasts of low areas of loop pile and higher sheared pile, while careful hand carving accentuates every detail. Mixtures of wool and viscose yarns add luxurious softness, subtle shimmer and textural interest.

Our *Bistro* pattern coordinates beautifully with patterns *74200-215 Colette Red* and *74200-216 Colette Yellow*.

STUDIO™  
*Karastan®*



© Karastan

ARTWORKS™  
N° 74200-214 COUTURE

---

STUDIO *Karastan*

ARTWORKS™  
74200-214 COUTURE

*Size shown: 5' x 8'*

*Sizes Available: 3'6" x 5'6", 5' x 8', 8' x 10', and 8'6" x 11'6"*

Fresh and styled for today's new living, the Artworks collection of hand made rugs offers statement-making designs in richly composed colors. Throughout the collection, elegant combinations and a beautiful array of patterning is enhanced by variations in fiber, yarn type and surface texture - taking full advantage of the variety of techniques available in this hand crafted construction.

Make a fashion statement with *Couture*, our dynamic pattern combines a floral, damask and scroll pattern in an intriguing composition. A perfect harmony between color and design is achieved by pairing bold graphics with subdued jewel tones including berry, olive, sage, terra-cotta and espresso. Surface texture and dimension are distinguished by the contrasts of low areas of loop pile and higher sheared pile. Careful hand carving accentuates every detail. Mixtures of wool and viscose yarns add luxurious softness, subtle shimmer and textural interest.

STUDIO™  
*Karastan*



© Karastan

ARTWORKS™  
N° 74200-215 COLETTE RED

---

STUDIO *Karastan*

ARTWORKS™  
74200-215 COLETTE RED

*Size shown: 8' x 10'*

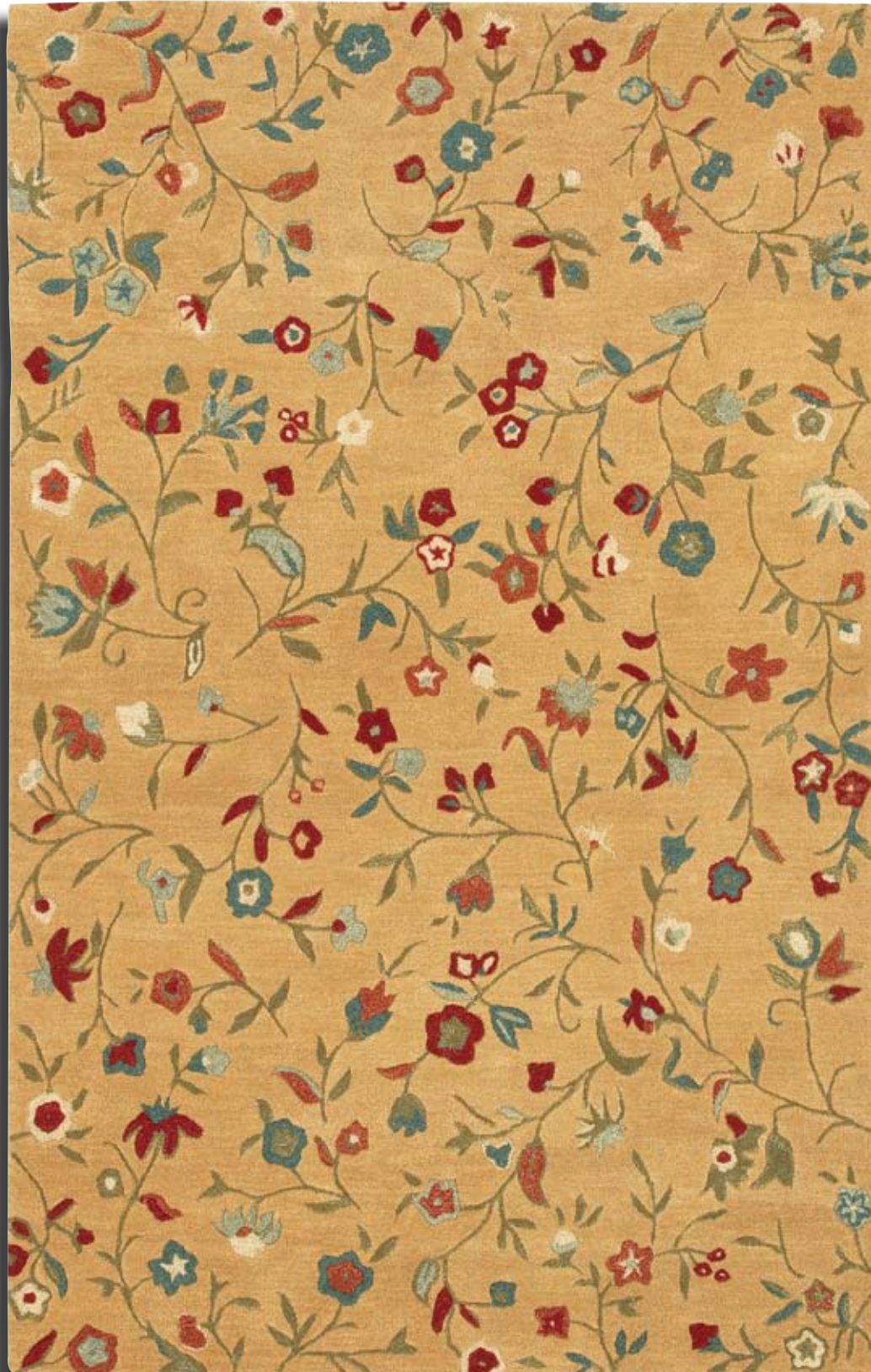
*Sizes Available: 3'6" x 5'6", 5' x 8', 8' x 10', and 8'6" x 11'6"*

Fresh and styled for today's new living, the Artworks collection of hand made rugs offers statement-making designs in richly composed colors. Throughout the collection, elegant combinations and a beautiful array of patterning is enhanced by variations in fiber, yarn type and surface texture - taking full advantage of the variety of techniques available in this hand crafted construction.

The scattered allover floral pattern of our *Colette Red* rug pattern provides a cheerful solution for any area that needs a sunny shot of color. Maize yellow, Mediterranean blue, terra-cotta, rattan and cedar combine in casual profusion of calico flowers on a provincial red ground. Surface texture and dimension are distinguished by the contrasts of low areas of loop pile and higher sheared pile, while careful hand carving accentuates every detail. Mixtures of wool and viscose yarns add luxurious softness, subtle shimmer and textural interest.

Our *Colette Red* pattern coordinates beautifully with patterns *74200-210 Bistro* and *74200-216 Colette Yellow*.

STUDIO™  
*Karastan*



© Karastan

ARTWORKS™  
N° 74200-216 COLETTE YELLOW

---

STUDIO *Karastan*

ARTWORKS™  
74200-216 COLETTE YELLOW

*Size shown: 5' x 8'*

*Sizes Available: 3'6" x 5'6", 5' x 8', 8' x 10', and 8'6" x 11'6"*

Fresh and styled for today's new living, the Artworks collection of hand made rugs offers statement-making designs in richly composed colors. Throughout the collection, elegant combinations and a beautiful array of patterning is enhanced by variations in fiber, yarn type and surface texture - taking full advantage of the variety of techniques available in this hand crafted construction.

The scattered allover floral pattern of our *Colette Yellow* rug pattern provides a cheerful solution for any area that needs a sunny shot of color. Provincial red, Mediterranean blue, terra-cotta, rattan and cedar combine in casual profusion of calico flowers on a maize yellow ground. Surface texture and dimension are distinguished by the contrasts of low areas of loop pile and higher sheared pile, while careful hand carving accentuates every detail. Mixtures of wool and viscose yarns add luxurious softness, subtle shimmer and textural interest.

Our *Colette Yellow* pattern coordinates beautifully with patterns *74200-210 Bistro* and *74200-215 Colette Red*.

STUDIO™  
*Karastan*



© Karastan

ARTWORKS™  
N° 74200-217 PLUM BLOSSOM

---

STUDIO *Karastan*

ARTWORKS™  
74200-217 PLUM BLOSSOM

*Size shown: 5' x 8'*

*Sizes Available: 3'6" x 5'6", 5' x 8', 8' x 10', 8'6" x 11'6" and 8' round*

Fresh and styled for today's new living, the Artworks collection of hand made rugs offers statement-making designs in richly composed colors. Throughout the collection, elegant combinations and a beautiful array of patterning is enhanced by variations in fiber, yarn type and surface texture - taking full advantage of the variety of techniques available in this hand crafted construction.

The serene floral of our *Plum Blossom* designs marries perfectly with today's Asian inspired decorating esthetics. Branches in teak, pearl, and soft maize are accentuated against the robin's egg blue loop pile ground. Surface texture and dimension are accentuated by the contrasts of low areas of loop pile and higher sheared pile, while careful hand carving accentuates every detail. Mixtures of wool and viscose yarns add luxurious softness, subtle shimmer and textural interest.

Our *Plum Blossom* pattern makes a delightful companion to our pattern 74200-218 *Zen Garden*.

STUDIO™  
*Karastan*



© Karastan

ARTWORKS™  
N° 74200-217 PLUM BLOSSOM ROUND

---

STUDIO *Karastan*

ARTWORKS™  
74200-217 PLUM BLOSSOM ROUND

*Size shown: 8' round*

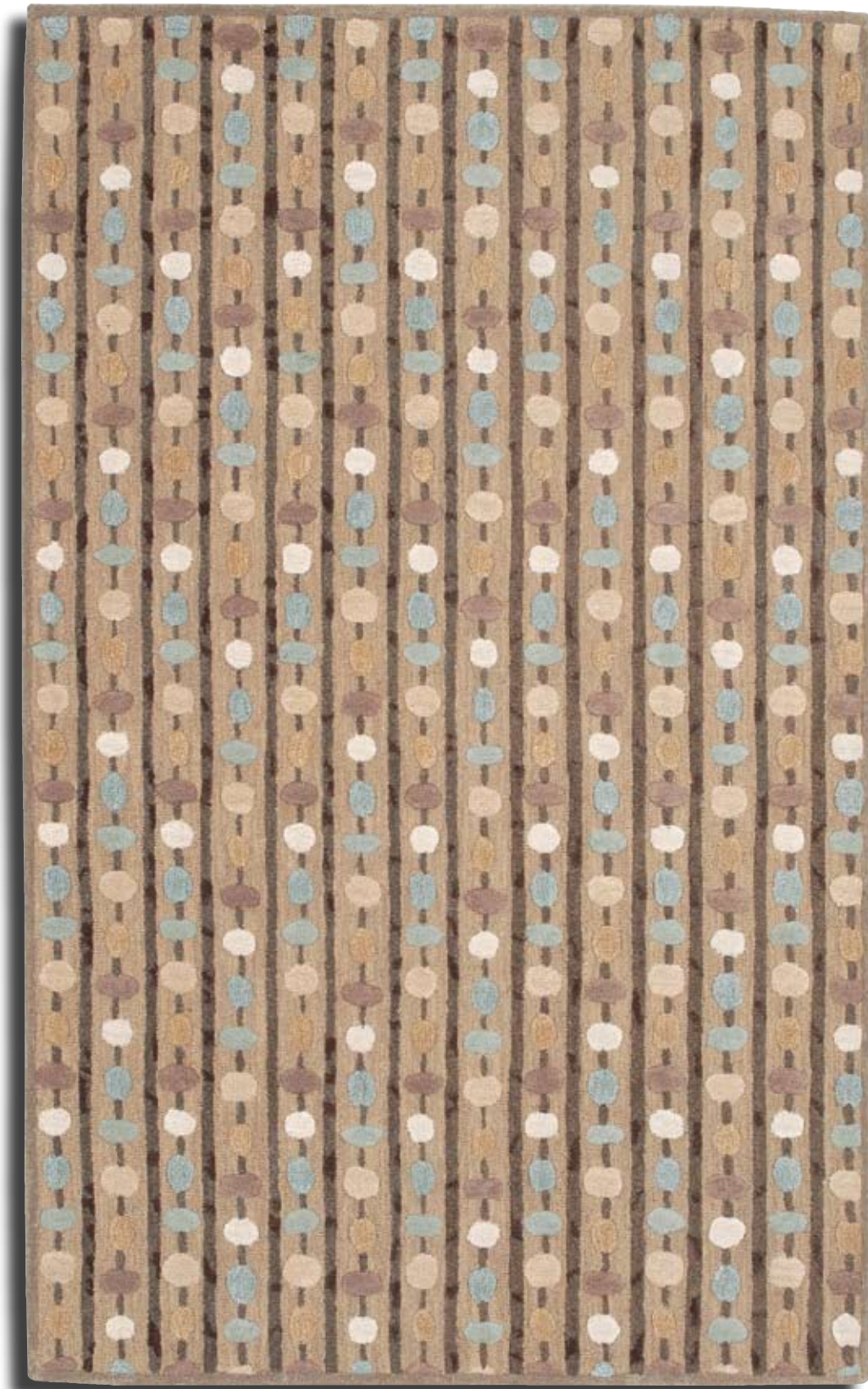
*Sizes Available: 3'0" x 5'0", 5' x 8', 8' x 10', 8'0" x 11'0" and 8' round*

Fresh and styled for today's new living, the Artworks collection of hand made rugs offers statement-making designs in richly composed colors. Throughout the collection, elegant combinations and a beautiful array of patterning is enhanced by variations in fiber, yarn type and surface texture - taking full advantage of the variety of techniques available in this hand crafted construction.

The serene floral of our *Plum Blossom* design marries perfectly with today's Asian inspired decorating esthetics. Branches in teak, pearl, and soft maize are silhouetted against the robin's egg blue loop pile ground. Surface texture and dimension are highlighted by the contrasts of low areas of loop pile and higher sheared pile, while careful hand carving accentuates every detail. Mixtures of wool and viscose yarns add luxurious softness, subtle shimmer and textural interest.

Our *Plum Blossom* pattern makes a delightful companion to our pattern 74200-218 *Zen Garden*.

STUDIO™  
*Karastan*



© Karastan

ARTWORKS™  
N° 74200-218 ZEN GARDEN

---

STUDIO *Karastan*

ARTWORKS™  
74200-218 ZEN GARDEN

*Size shown: 5' x 8'*

*Sizes Available: 3'6" x 5'6", 5' x 8', 8' x 10', and 8'6" x 11'6"*

Fresh and styled for today's new living, the Artworks collection of hand made rugs offers statement-making designs in richly composed colors. Throughout the collection, elegant combinations and a beautiful array of patterning is enhanced by variations in fiber, yarn type and surface texture - taking full advantage of the variety of techniques available in this hand crafted construction.

As tranquil as a Japanese garden, the orderly "stones" pattern and subtle colors reveal the delights of this design – executed in maize, pearl, robin's egg blue and soft mocha browns. The color palette adapts well to a multitude of neutral upholstery colors as well as rich wood tones. Surface texture and dimension are accentuated by the contrasts of low areas of loop pile and higher sheared pile, while careful hand carving accentuates every detail. Mixtures of wool and viscose yarns add luxurious softness, subtle shimmer and textural interest.

Our *Zen Garden* pattern is designed to coordinate with our pattern *74200-217 Plum Blossom*.

STUDIO™  
*Karastan*



© Karastan

ARTWORKS™  
N° 74200-221 PLUM BLOSSOM MOCHA

---

STUDIO *Karastan*

ARTWORKS™  
74200-221 PLUM BLOSSOM MOCHA

*Size shown: 5' x 8'*

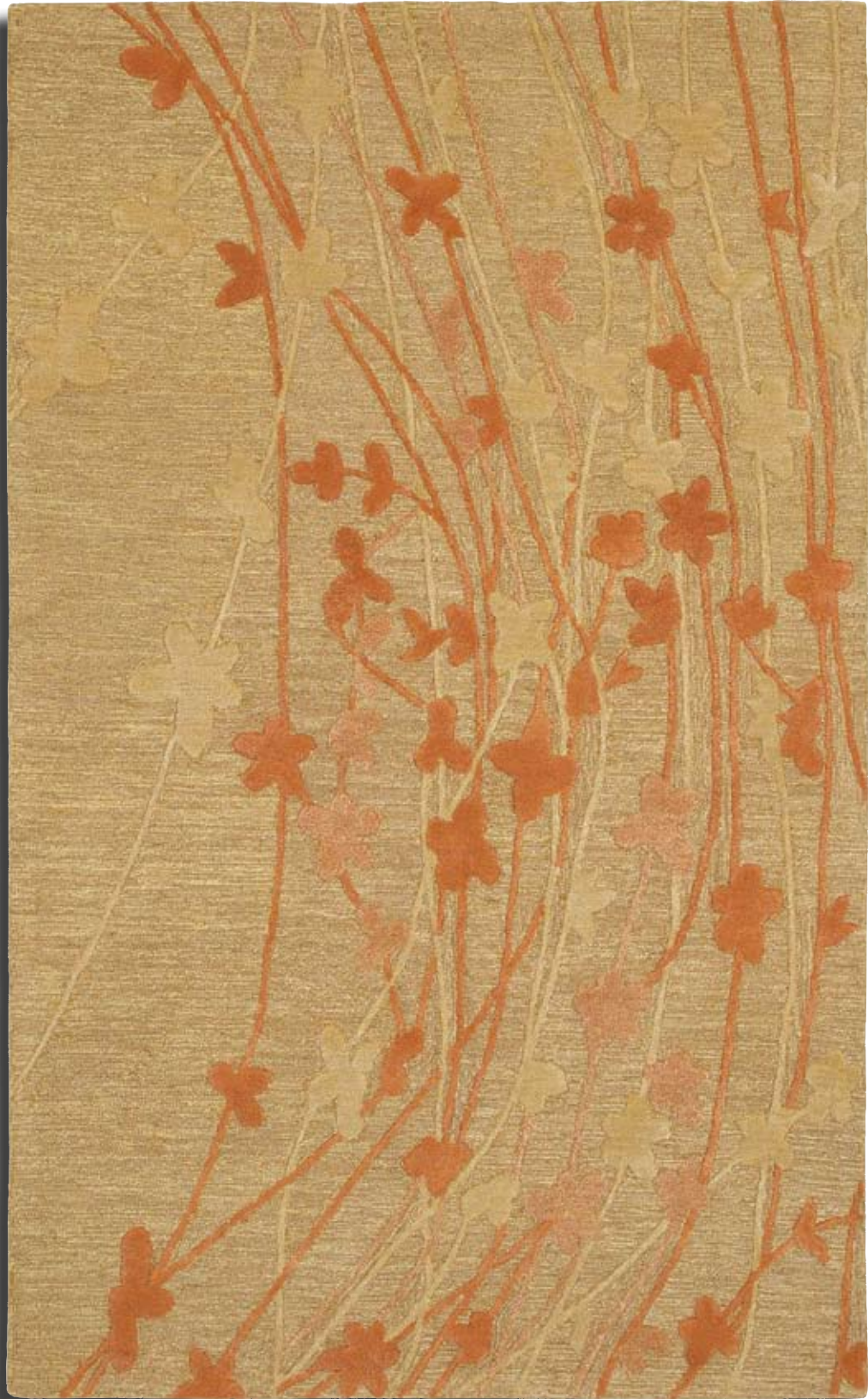
*Sizes Available: 3'6" x 5'6", 5' x 8', 8' x 10', and 8'6" x 11'6"*

Fresh and styled for today's new living, the Artworks collection of hand made rugs offers statement-making designs in richly composed colors. Throughout the collection, elegant combinations and a beautiful array of patterning is enhanced by variations in fiber, yarn type and surface texture - taking full advantage of the variety of techniques available in this hand crafted construction.

The serene floral of our *Plum Blossom Mocha* design marries perfectly with today's globally inspired decorating esthetics. Branches in straw, pearl, and robin's egg blue are silhouetted against the warm mocha loop pile ground. Surface texture and dimension are highlighted by the contrasts of low areas of loop pile and higher sheared pile, while careful hand carving accentuates every detail. Mixtures of wool and viscose yarns add luxurious softness, subtle shimmer and textural interest.

Our *Plum Blossom Mocha* pattern makes a striking companion to *74200-217 Plum Blossom*, and pattern *535-16004 Tiana Glacier Blue* from our 'Shapura' rug collection.

STUDIO™  
*Karastan*®



© Karastan

ARTWORKS™  
N° 74200-222 WILDFLOWERS

---

STUDIO *Karastan*

ARTWORKS™  
74200-222 WILDFLOWERS

*Size shown: 5' x 8'*

*Sizes Available: 3'6" x 5'6", 5' x 8', 8' x 10', and 8'6" x 11'6"*

Fresh and simple, our *Wildflowers* pattern is designed to lend a light and airy flavor to any room. The graceful pattern motifs evoke a windswept field of wild cosmos – rendered in a palette of soft terra cotta and hemp against a sand colored background. Surface texture and dimension are accentuated by the contrasting areas of low loop pile and higher sheared pile, while careful hand carving accentuates every detail. Mixtures of wool and viscose yarns add luxurious softness, subtle shimmer and textural interest.

Styled for today's relaxed living, the Artworks collection of hand made rugs offers statement-making designs in richly composed colors. Throughout the collection, elegant combinations and a beautiful array of patterning is enhanced by variations in fiber, yarn type and surface texture – taking full advantage of the variety of techniques available in this hand crafted construction.

STUDIO™  
*Karastan*®

## SCANDIA SHAG

The rich texture and organic look of our Scandia Shag collection softens the edges of modern design - adding casual comfort to any room. The lush, long pile is luxuriously soft underfoot and flatters floors with textural interest making these rugs a perfect counterpoint for contemporary furnishings. Cabled accent yarns and a sturdy woven construction add to both the aesthetics and the serviceability.

STUDIO<sup>™</sup>  
*Karastan*<sup>®</sup>



© Karastan

SCANDIA SHAG  
N° 74080-401 TWISTED STRIPE

---

STUDIO *Karastan*

# SCANDIA SHAG

## 74080-401 TWISTED STRIPE

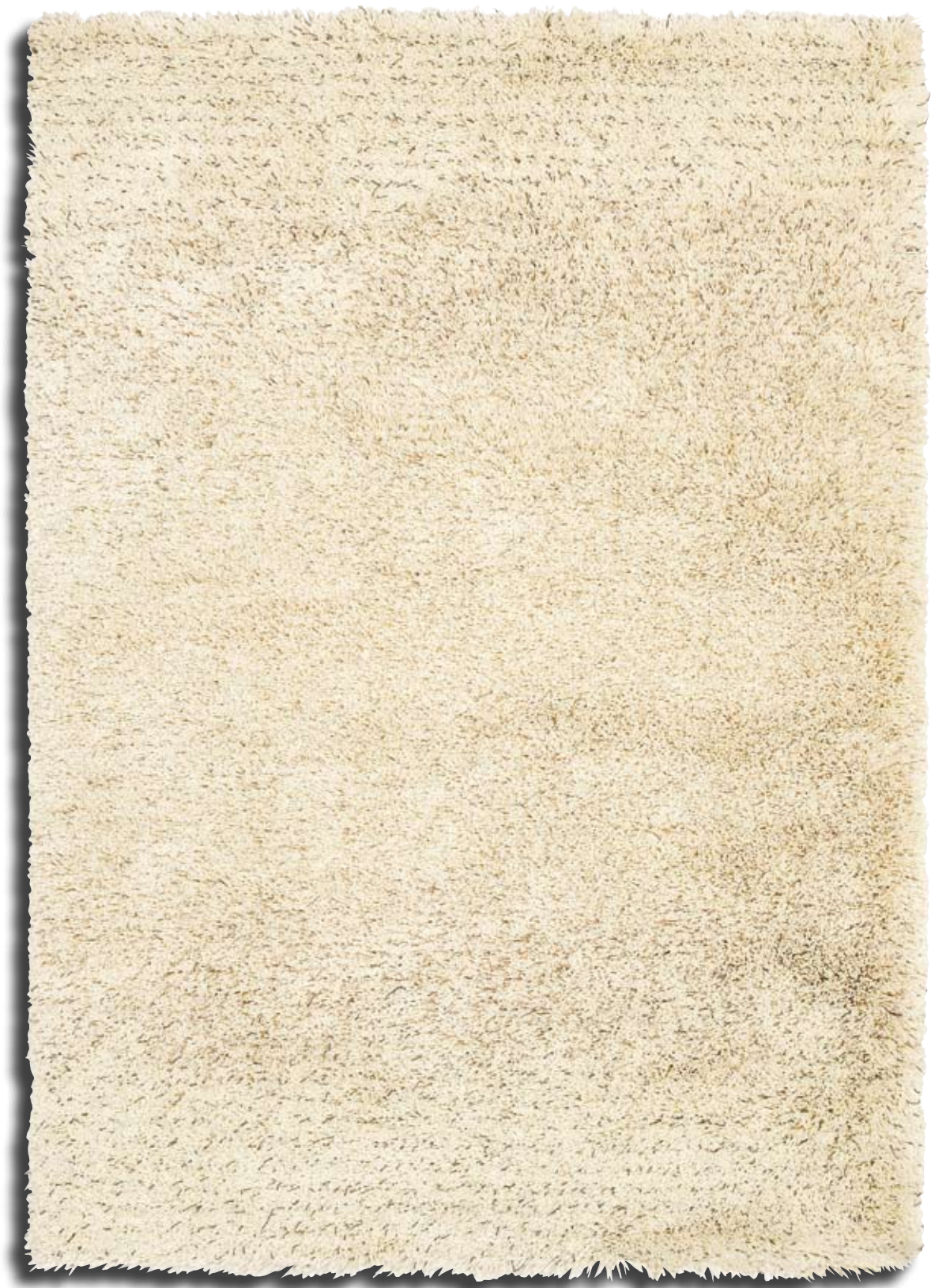
*Size shown: 5'5" x 7'8"*

*Sizes Available: 5'5" x 7'8", 6'7" x 9'6", and 7'8" x 11'*

The organic brown tones and curved lines of our *Twisted Stripe* pattern soften the edges of modern design in an easy to live with neutral palette. The two-tone effect of the cabled accent yarns adds wonderful textural interest that mixes beautifully with both light and dark woods making these rugs a perfect counterpoint for contemporary furnishings. The lush, long pile is soft underfoot lending casual comfort to any setting.

Our *Twisted Stripe* pattern coordinates beautifully with pattern *74080-402 Ombre*.





© Karastan

*SCANDIA SHAG*  
*N° 74080-402 OMBRE*

---

STUDIO *Karastan*

# SCANDIA SHAG

## 74080-402 OMBRE

*Size shown: 5'5" x 7'8"*

*Sizes Available: 5'5" x 7'8", 6'7" x 9'6", and 7'8" x 11'*

In our Ombre Pattern, a subtle effect of graduated dark to light accents is created with a 'salt and pepper' sprinkling of light medium and dark chocolate cabled yarns against a cloud white field. The lush, long pile is luxuriously soft underfoot, and softens the edges of modern design in an easy to live with neutral palette. The two-tone effect of the cabled accent yarns adds wonderful textural interest that mixes beautifully with both light and dark woods making these rugs a perfect counterpoint to contemporary and casual furnishings.

Our *Ombre* pattern coordinates beautifully with pattern *74080-401 Twisted Stripe*.

STUDIO™  
*Karastan*