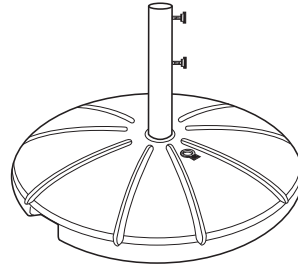




Resin Umbrella Base with Fill Cap



Stem Height: 13"
Diameter: 21"

Product Specifications

| Product Description | Reference Number | Color | UPC Code 014306 | Weight Each (lbs.) | Master Pack | Master Pack Volume (cu. ft) |
|-----------------------------------|------------------|--------|-----------------|--------------------|-------------|-----------------------------|
| Resin Umbrella Base with Fill Cap | US602104 | White | 912929 | 5.18 | 1 | 1.12 |
| | US602137 | Bronze | 912950 | 5.18 | 1 | 1.12 |
| | US602117 | Black | 912943 | 5.18 | 1 | 1.12 |
| | | | | | | |
| | | | | | | |
| | | | | | | |
| | | | | | | |
| | | | | | | |
| | | | | | | |
| | | | | | | |

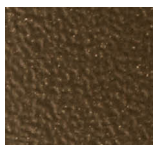
Features & Benefits Warranty: 1 yr.

- Specifically designed to fit under any Grosfillex® table.
- Must be filled with water or sand to weigh 35 to 40 lb. for stability.
- Made of 100% prime resin, material naturally impervious to moisture, salt air, and chlorine.
- Built in resin glides will not stain, nor mar your terrace or deck.
- Two thumb screws to anchor the umbrella pole.
- Will not peel or rust in the hot sun.
- Easy to clean with soap and water.

Our umbrella bases are available in a variety of sizes and materials to fit your needs. Be sure to measure where you will be using your base to ensure fit. Your Grosfillex representative can assist you in determining the best base for your needs.



White



Bronze



Black

