



| | |
|--------------|--------|
| Back Height: | 35" |
| Seat Height: | 17.25" |
| Arm Height: | 25" |
| Depth: | 18.5" |
| Width: | 22.5" |

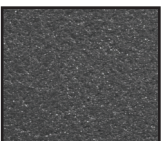
Savannah Stacking Armchair

Product Specifications

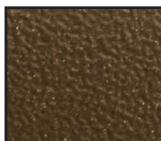
| Product Description | Reference Number | Color | UPC Code 014306 | Weight Each (lbs.) | Master Pack | Master Pack Volume (cu. ft) |
|----------------------------|------------------|-------------|-----------------|--------------------|-------------|-----------------------------|
| Savannah Stacking Armchair | US103102 | Charcoal | 131399 | 8.32 | 20 | 37.05 |
| | US413102 | Charcoal | 131399 | 9.30 | 4 | 14.11 |
| | US103137 | Bronze Mist | 131405 | 8.32 | 20 | 37.05 |
| | US413137 | Bronze Mist | 131405 | 9.30 | 4 | 14.11 |
| | | | | | | |
| | | | | | | |
| | | | | | | |
| | | | | | | |
| | | | | | | |
| | | | | | | |
| | | | | | | |
| | | | | | | |

Features & Benefits Warranty: 3 Yrs.

- Passes ASTM F 1561-96 Class B performance standard for commercial outdoor seating
- Specifically built for food service use.
- Open lattice back design to provide cool, yet positive support.
- Made of Kevring® cast synthetic resin, a proprietary resin composite specifically developed to allow the replication of cast metal without the maintenance and at a fraction of the cost.
- True metal texture and a satin finish.
- Will stay cool in the sun.
- Will retain its original color, texture, and finish with little maintenance and without rusting.
- Rated to 300 pounds for safe use in commercial environments.
- Stacks for easy storage.



Charcoal



Bronze Mist

