



20 My Lifestyle™ 23

TABLE OF CONTENTS

FACTORY 2	2
CABRIOLE BASES WITH HAMPTON TOPS	8
CRAWFORD	4
DAVIS	5
HAMPTON FIRE TABLE	10
THATCH FIRE TABLE	11
WILTSHIRE	8
FACTORY 7	12
ABBAY	14
FARMSTEAD	15
GATHERING	16
TAHOE FIRE TABLE	21
TAHOE LOUNGE	20
TAHOE SEATING	18
FABRICS AND FINISHES	22
PRICE LIST	24
WARRANTY AND CARE	32

Please note, LifeStyle is limited to two collections, two finishes and two fabrics per container.



CABRIOLE BASES WITH HAMPTON TOPS	8
CRAWFORD	4
DAVIS	5
HAMPTON FIRE TABLE	10
THATCH FIRE TABLE	11
WILTSHIRE	6

CRAWFORD
ALUMINUM
—
FACTORY 2



CRA-22
LOVE SEAT



CDT-2447
COFFEE TABLE

CRA-20
SWIVEL LOUNGE CHAIR





DAVIS
ALUMINUM
—
FACTORY 2



DAV-22
LOVE SEAT



CDT-2447
COFFEE TABLE

DAV-20
SWIVEL LOUNGE CHAIR

WILTSHIRE
ALUMINUM

—
FACTORY 2



DC-4Q0406
LOUNGE CHAIR





DC-4Q0465
SWIVEL ROCKER
LOUNGE CHAIR



DC-4Q0419
LOVE SEAT



DC-4Q0420
SOFA



DC-4Q0470
CHAISE LOUNGE



DC-4Q0417
DINING ARM CHAIR



DC-4Q0472
SWIVEL ROCKER
DINING CHAIR



DC-4Q0469
SWIVEL COUNTER STOOL

CABRIOLE BASES
WITH HAMPTON TOPS

—
FACTORY 2



HAM-3648
36" x 48" COFFEE TABLE



HAM-CO42
42" SQUARE COUNTER
HEIGHT TABLE



HAM-BA42
42" SQUARE BAR
HEIGHT TABLE



HAM-0022
22" END TABLE



HAM-4884
48" x 48" OVAL
UMBRELLA TABLE



HAM-0060
60" ROUND
UMBRELLA TABLE



HAM-0048
48" ROUND
UMBRELLA TABLE



HAMPTON FIRE TABLE

—
FACTORY 2



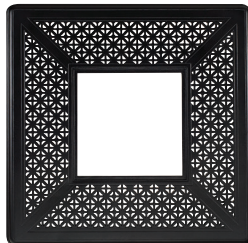
FP42-HCNT
42" SQUARE COUNTER HEIGHT
TABLE WITH SQUARE BURNER
AND SQUARE HAMPTON TOP



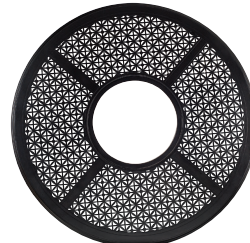
650742-HAM
42" SQUARE FIRE TABLE
WITH SQUARE BURNER AND
SQUARE HAMPTON TOP



650748-HAM
48" ROUND FIRE TABLE
WITH ROUND BURNER AND
ROUND HAMPTON TOP



TOP VIEW



TOP VIEW

THATCH FIRE TABLE

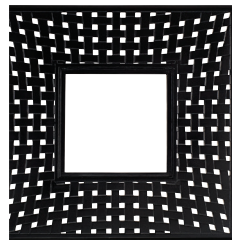
—
FACTORY 2



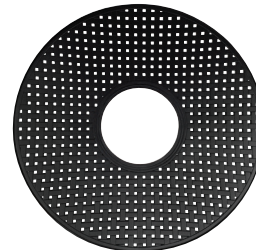
650742-THA
42" SQUARE FIRE TABLE
WITH SQUARE BURNER AND
SQUARE THATCH TOP



650748-THA
48" ROUND FIRE TABLE
WITH ROUND BURNER AND
ROUND THATCH TOP



TOP VIEW



TOP VIEW



FACTORY 7

ABBEY	14
FARMSTEAD	15
GATHERING	16
TAHOE	18

ABBEY
ALUMINUM
—
FACTORY 7



DC-ABB-1001
DINING ARM CHAIR



DC-ABB-1005
ARMLESS DINING CHAIR



DC-ABB-4200
44\"/>



DC-MKT-8036
80\"/>





FARMSTEAD

ALUMINUM

—

FACTORY 7



DC-FAR-01
DINING ARM CHAIR

DC-FAR-4086
RECTANGULAR DINING TABLE

GATHERING
ALUMINUM
—
FACTORY 7



DC-GAT-01
DINING ARM CHAIR



DC-GAT-05
DINING SIDE CHAIR



DC-GAT-17
BENCH

DC-GAT-4282
42" x 82" RECTANGULAR
DINING TABLE



TAHOE
ALUMINUM
—
FACTORY 7



DC-TAH-2001
DINING ARM CHAIR





DC-TAH-1063
SWIVEL GLIDER
LOUNGE CHAIR



DC-TAH-1031L
LEFT FACING
LOVE SEAT

DC-TAH-1021
CORNER UNIT

DC-TAH-1031R
RIGHT FACING
LOVE SEAT



DC-MKT-8036
80" x 36" DINING TABLE



DC-TAH-4200
44" DINING TABLE



DC-TAH-2127
COFFEE TABLE

TAHOE
ALUMINUM

—
FACTORY 7



DC-TAH-1024
CHAISE LOUNGE



DC-TAH-1212
"C" TABLE



TAHOE
FIRE TABLE
ALUMINUM
—
FACTORY 7



DC-TAH-1033
42" SQUARE FIRE TABLE BASE

DC-TAH-1044
42" SQUARE FIRE TABLE TOP



FABRICS

ITEM	FABRIC NAME
AS7	ASGARD EVENING
AS1	ASGARD HAZELNUT
AT1	ASGARD ROSE
AH7	ASGARD WALNUT
BH1	BERGEN BEIGE
BH3	BERGEN STONE
CN8	CANVAS WALNUT
PG5	PANAMA COBBLESTONE
PH1	PANAMA SMOKE GRAY
PG7	PANAMA WOOD
ITEM	SLING FABRICS
B13	DELBROOK
51D	SISAL
58E	WEYBURN COPPER



AS7 - ASGARD EVENING



AS1 - ASGARD HAZELNUT



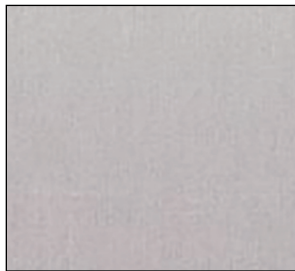
AT1 - ASGARD ROSE



AH7 - ASGARD WALNUT



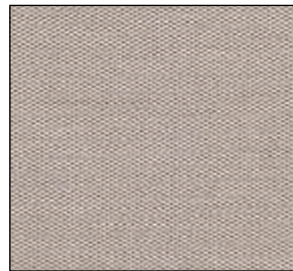
BH1 - BERGEN BEIGE



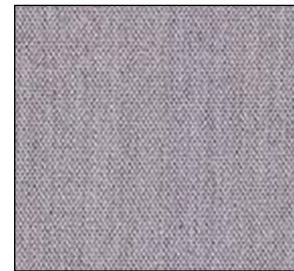
BH3 - BERGEN STONE



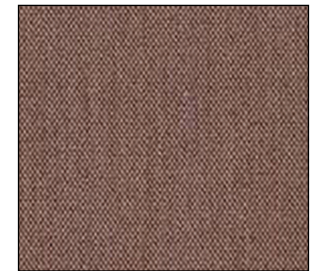
CN8 - CANVAS WALNUT



PG5 - PANAMA COBBLESTONE



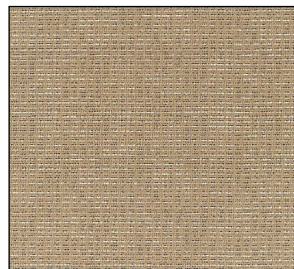
PH1 - PANAMA SMOKE GRAY



PG7 - PANAMA WOOD



B13 - DELBROOK



51D - SISAL



58E - WEYBURN COPPER

FINISHES



CHESTNUT BROWN



MATTE TEXTURED WHITE



TEXTURED BLACK



TEXTURED PEWTER

These finishes are only available for Factory 1 and 2

2023 Season - Factory 2

Port of discharge - Shanghai, China

Container Cubes*: 40 ft. = 1,950, 40 ft. HC = 2,150, 45 ft. HC = 2,400

*container cubes are + or - 10%

				Packed Dimension in inches				
Item Number	Description	2023 Season Price Each	Pack	Width	Length	Height	Weight	Cubic Feet

Crawford

CRA-20	Swivel Lounge Chair	\$352	2	35.43	29.53	31.50	38.06	19.07
CRA-22	Love Seat	\$550	2	44.09	51.97	41.73	92.40	55.34
CDT-2447	Coffee Table	\$106	1	48.03	25.20	3.94	25.08	2.76

				Packed Dimension in inches				
Item Number	Description		Pack	Width	Length	Height	Weight	Cubic Feet

Davis

DAV-20	Swivel Lounge Chair	\$345	2	35.43	29.53	31.50	38.06	19.07
DAV-22	Love Seat	\$532	2	53.15	41.34	41.34	80.52	52.56
CDT-2447	Coffee Table	\$106	1	48.03	25.20	3.94	25.08	2.76

2023 Season - Factory 2

Port of discharge - Shanghai, China

Container Cubes*: 40 ft. = 1,950, 40 ft. HC = 2,150, 45 ft. HC = 2,400

*container cubes are + or - 10%

				Packed Dimension in inches				
Item Number	Description		Pack	Width	Length	Height	Weight	Cubic Feet
Wiltshire								
DC-4Q0417	Dining Arm Chair	\$161	4	26.38	35.83	41.34	70.40	22.61
DC-4Q0472	Swivel Rocker Dining Chair	\$184	2	29.53	31.89	25.59	45.10	13.94
DC-4Q0469	Swivel Counter Stool	\$190	2	26.38	30.31	31.89	53.90	14.76
DC-4Q0406	Lounge Chair	\$316	2	31.10	38.98	38.19	50.60	26.79
DC-4Q0465	Swivel Rocking Lounge Chair	\$353	1	30.31	33.07	29.53	58.52	17.13
DC-4Q0419	Love Seat	\$585	2	38.98	55.51	38.19	73.04	47.82
DC-4Q0420	Sofa	\$1,023	2	38.98	78.74	38.19	95.04	67.83
DC-4Q0470	Chaise Lounge	\$561	2	35.04	72.44	27.56	92.40	40.48

2023 Season - Factory 2

Port of discharge - Shanghai, China

Container Cubes*: 40 ft. = 1,950, 40 ft. HC = 2,150, 45 ft. HC = 2,400

*container cubes are + or - 10%

				Packed Dimension in inches				
Item Number	Description		Pack	Width	Length	Height	Weight	Cubic Feet
Cabriole Bases with Hampton Tops - sold as individual items, master pack as minimums								
HAM-0022	22" End Table	\$102	1	23.62	23.62	22.05	20.46	7.12
HAM-3648	36" x 48" Coffee Table	\$285	1	38.19	50.20	4.72	57.20	5.24
HAM-CO42	42" Square Counter Height Umbrella Table	\$334	1	44.09	44.09	6.69	67.10	7.53
HAM-BA42	42" Square Bar Height Umbrella Table	\$344	1	44.09	48.43	7.09	69.30	8.76
HAM-0048	48" Round Umbrella Table	\$348	1	50.00	50.00	6.69	69.30	9.68
HAM-0060	60" Round Umbrella Table	\$458	1	63.39	63.39	6.69	91.30	15.56
HAM-4884	48" x 84" Oval Umbrella Table	\$580	1	51.18	87.01	6.69	119.90	17.25

				Packed Dimension in inches				
Item Number	Description		Pack	Width	Length	Height	Weight	Cubic Feet
Hampton Fire Tables								
650742-HAM	42" Square Fire Table with Square Burner and Square Hampton Top	\$649	Top	44.09	44.09	2.95	48.62	3.32
			Base Burner	27.95	27.95	26.77	60.50	12.11
650748-HAM	48" Round Fire Table with Round Burner and Round Hampton Top	\$650	Top	50.00	50.00	2.95	48.62	4.27
			Base Burner	27.95	27.95	26.77	60.50	12.11
FP42-HCNT	42" Square Counter Height Fire Table with Square Burner and Square Hampton Top	\$718	Top	44.09	44.09	2.95	48.62	3.32
			Base Burner	27.95	27.95	35.43	64.90	16.02

2023 Season - Factory 2

Port of discharge - Shanghai, China

Container Cubes*: 40 ft. = 1,950, 40 ft. HC = 2,150, 45 ft. HC = 2,400

*container cubes are + or - 10%

Item Number	Description		Pack	Packed Dimension in inches			Weight	Cubic Feet
				Width	Length	Height		

Thatch Fire Tables

650742-THA	42" Square Fire Table with Square Burner and Square Thatch Top	\$639	Top	44.09	44.09	2.95	48.62	3.32
			Base Burner	27.95	27.95	26.77	60.50	12.11
650748-THA	48" Round Fire Table with Round Burner and Round Thatch Top	\$647	Top	50.00	50.00	2.95	48.62	3.32
			Base Burner	27.95	27.95	26.77	53.90	12.11

Item Number	Description		Pack	Packed Dimension in inches			Weight	Cubic Feet
				Width	Length	Height		

Throw Pillows

TP-18	18" x 18" Throw Pillows	\$22	4	18.90	18.90	29.53	10.00	6.10
TP-22	22" x 22" Throw Pillows	\$32	4	23.23	23.23	29.53	14.00	9.22

Please note: Throw Pillows are sold in cartons of 4. Only one fabric can be specified per carton.

2023 Season - Factory 7

Port of discharge - Shenzhen, China

Container Cubes*: 40 ft. = 1,950, 40 ft. HC = 2,150, 45 ft. HC = 2,400

*container cubes are + or - 10%

Item Number	Description	Price Each	Pack	Packed Dimension in inches			Cubic Feet	Finish
				Width	Length	Height		

Abbey

DC-ABB-4200	Dining Table 44"	\$269	1	43.50	43.50	7.50	7.67	Truffle
DC-ABB-1001	Dining Arm Chair	\$66	2	27.17	25.20	44.49	17.63	Truffle
DC-MKT-8036	80" X 36" Dining Table	\$391	1	82.00	38.00	7.00	12.62	Truffle
DC-ABB-1005	Armless Dining Chair	\$61	4	41.00	24.00	37.00	21.07	Truffle
DC-ABB-1001	Dining Arm Chair	\$66	2	21.00	24.00	37.00	10.79	Truffle

Item Number	Description	Price Each	Pack	Packed Dimension in inches			Cubic Feet	Finish Weave
				Width	Length	Height		

Farmstead

DC-FAR-4086	Rectangular Dining Table	\$467	1	87.45	41.75	7.45	15.74	Brown Oak
DC-FAR-01	Dining Arm Chair	\$227	1	52.25	35.50	26.34	28.34	Spice

2023 Season - Factory 7

Port of discharge - Shenzhen, China

Container Cubes*: 40 ft. = 1,950, 40 ft. HC = 2,150, 45 ft. HC = 2,400

*container cubes are + or - 10%

				Packed Dimension in inches				
Item Number	Description	Price Each	Pack	Width	Length	Height	Cubic Feet	Finish Weave
Gathering								
DC-GAT-4282	42" x 82" Rectangular Dining Table	\$448	1	85.00	44.50	7.60	16.64	Island Maple
DC-GAT-17	Bench	\$188	1	85.00	18.75	6.50	6.03	Island Maple
DC-GAT-01	Dining Arm Chair	\$198	2	52.35	35.50	26.35	28.34	English Gray
DC-GAT-05	Dining Side Chair	\$155	2	37.10	33.45	22.45	16.12	English Gray

2023 Season - Factory 7

Port of discharge - Shenzhen, China

Container Cubes*: 40 ft. = 1,950, 40 ft. HC = 2,150, 45 ft. HC = 2,400

*container cubes are + or - 10%

				Packed Dimension in inches				
Item Number	Description	Price Each	Pack	Width	Length	Height	Cubic Feet	Finish Weave
Tahoe								
DC-TAH-4200	Dining Table 44" X 44"	\$786	1	43.50	43.50	7.00	7.67	Truffle
DC-MKT-8036	80" X 36" Dining Table	\$391	1	82.00	38.00	7.00	12.62	Truffle
DC-TAH-2001	Dining Arm Chair	\$160	2	50.00	32.00	38.00	35.19	Truffle Mica
DC-TAH-1031L	LAF Love Seat	\$851	1	61.82	44.49	29.53	47.00	Truffle Mica
DC-TAH-1031R	RAF Love Seat							
DC-TAH-1021	Corner Unit	\$365	1	37.80	37.80	28.74	23.76	Truffle Mica
DC-TAH-2127	Coffee Table							
DC-TAH-1063	Swivel Glider Lounge Chair	\$321	1	38.25	35.00	35.00	27.12	Truffle Mica
DC-TAH-1024	Chaise Lounge	\$317	2	82.00	29.50	24.00	33.60	Truffle Mica
DC-TAH-1212	"C" Table							
DC-TAH-1033	42" Square Fire Pit - Base	\$626	1	34.65	34.64	27.17	18.88	Truffle
DC-TAH-1044	42" Square Fire Pit - Top			46.85	46.85	4.73	6.01	

Limited Furniture Warranty

WHAT IS COVERED

We warrant to you, the original purchaser, that with the exceptions stated below, the furniture you have selected is free from defects in material and workmanship. Straps, slings, and cushions are warranted based on quality of workmanship, not fading, discoloration, mildew resistance or stretching.

HOW LONG DOES COVERAGE LAST

This limited warranty lasts for the stated warranty period from the date of delivery of the furniture to you ("Warranty Period"). Coverage terminates if you sell or otherwise transfer the furniture.

WHAT WOODARD DIRECT WILL DO

If within the Warranty Period, your furniture fails structurally or if the finish cracks, peels or blisters, Woodard Direct will, at our option, credit, repair or replace the frame in the original color and style. In the event that a frame color, style or fabric is no longer available, we reserve the right to substitute the defective frame, sling or cushion in a similar style or color at our option. Please note, because wrought iron is made from steel, small amounts of rust seepage may appear when used outdoors, mainly in the joints and crevices. This seepage is normal and is not covered under warranty. Regular maintenance (e. g., washing the furniture and touching up nicks and scrapes must be exercised.

TO OBTAIN SERVICE

Any claim under this warranty should be initiated within the Warranty Period by contacting one of the following; any authorized Woodard Direct dealer; or Woodard Direct Customer Service online at www.retail3@woodard-furniture.com or phone at: 800-877-2290. Woodard Direct reserves the right to examine all merchandise claimed to be defective. Upon arrival of the claim, Woodard Direct will authorize either repair or replacement of the defective furniture, strap or sling. No returns shall be accepted without a return authorization from Woodard Direct.

WHAT IS NOT COVERED

This warranty does not cover and is void if damage is a result of freight/shipping, a failure caused by unreasonable or abusive use, acts of God, improper care, freeze damage, mildew, normal wear, stretching of fabrics and vinyl straps, glass breakage, glides, if the furniture is used for commercial purposes or if the customer fails to provide reasonable and necessary care as outlined in the product information brochures.

DISCLAIMER

This warranty is valid only in the 50 United States and Canada. This warranty is in lieu of any implied or other expressed warranties. Implied warranties, including any warranty of merchantability imposed on the sale of the furniture under State law, are limited to the stated warranty period. Some states do not allow limitations on how long an implied warranty lasts, so the above limitation may not apply to you.

Limited Furniture Warranty

Wrought iron and steel frames

Warranty period- 3 year warranty

Cleaning and maintenance- Clean with warm, soapy water. Damage to the paint finish may cause corrosion, touch up with paint immediately. To maintain the gloss on non-textured finishes, protect with a fine automotive wax. On textured finishes, periodically apply mineral oil or baby oil.

Removing stains, mildew, etc.- Woodard Direct multi-step finishing process results in a stain-resistant finish. Severe stains may require light sanding and touch-up painting.

Insect repellents and suntan lotions- The finish on Woodard Direct furniture is formulated and baked on to make it highly resistant to repellent and lotions. However, to avoid discoloration, clean metal parts of these products frequently.

Special instructions- Frame finish touch-up instructions: When covering small spots of surface metal, clean area by sanding lightly and wipe immediately to prevent rust. When preparing scratched areas for touch-up painting, rub lightly with steel wool to smooth the surface and improve paint adhesion. Apply a thin coat of touch-up paint and allow ample drying time between coats.

Aluminum and cast aluminum frames

Warranty period- 3 year warranty

Cleaning and maintenance- Clean with warm, soapy water. To maintain the gloss on non-textured finishes, protect with a fine automotive wax. On Textured finishes, periodically apply mineral oil or baby oil.

Removing stains, mildew, etc.- Woodard Direct multi-step finishing process results in a stain-resistant finish. Severe stains may require light sanding and touch-up painting.

Insect repellents and suntan lotions- The finish on Woodard Direct furniture is formulated and baked on to make it highly resistant to repellents and lotions. However, to avoid discoloration, clean the frame as soon as possible after the exposure.

Special instructions- Frame finish touch-up instructions: When using touch-up paints, please follow instructions and cautions on product labels. If covering scratches, rub lightly with steel wool to smooth the surface and improve paint adhesion. Apply a thin coat of touch-up paint and allow ample drying time between coats.

Woven

Warranty period- 3 year warranty

Cleaning and maintenance- For best results, clean regularly with mild detergent and warm water.

Removing stains, mildew, etc.- Clean with a solution of warm water, mild laundry detergent, and chlorine bleach (no more than 1/4 cup to three gallons of water). Never use a solvent-type solution. Use X-14 Instant Mildew Stain Remover for more severe growth.

Insect repellents and suntan lotions- Not recommended. Insect repellents and suntan lotions can reduce the life of PVC, accelerate fading and stain fabrics. To avoid damage, wipe clean with mild laundry detergent and warm water.

Special instructions- DO NOT USE solvents, scouring agents, carbon tetrachloride, undiluted bleach, janitorial cleansers or gasoline. If in doubt about using a detergent, choose an inconspicuous area and test the cleaner.

Limited Furniture Warranty

All table tops (including tempered glass, faux stone, stone and granite tops)

Cleaning and maintenance- Clean regularly with a soft cloth, a mild detergent and warm water. Buff dry with a clean, lint-free cloth.

Removing stains, mildew, etc.- See cleaning and maintenance instructions.

Insect repellents and suntan lotions- See cleaning and maintenance instructions.

Special instructions- DO NOT USE solvents, scouring agents, carbon tetrachloride, undiluted bleach, janitorial cleansers or gasoline.

PVC, PVC wicker weaves, and straps

Cleaning and maintenance- For best results, clean regularly with mild detergent and warm water. Cleaning will help prevent mildew by washing out dirt particles that may become trapped. Shake out excess moisture after rinsing and allow to dry thoroughly before storing.

Removing stains, mildew, etc.- Clean with a solution of warm water, mild laundry detergent, and chlorine bleach (no more than 1/4 cup to three gallons of water). Never use a solvent-type solution. Use X-14 Instant Mildew Stain Remover for more severe growth.

Insect repellents and suntan lotions- Not recommended. Insect repellents and suntan lotions can reduce the life of PVC, accelerate fading and stain fabrics. To avoid damage, wipe clean with mild laundry detergent and warm water.

Special instructions- DO NOT USE solvents, scouring agents, carbon tetrachloride, undiluted bleach, janitorial cleansers or gasoline. If in doubt about using a detergent, choose an inconspicuous area and test the cleaner.

Acrylic, acrylicolefin, polyolefin, and PVC acrylic

Cleaning and maintenance- Spot wash by sponging briskly with a soapy solution of Ivory Liquid® or Joy® in lukewarm water (do not exceed 100 ° F). Thoroughly rinse with clean water to remove soap. Allow to air dry completely before storing.

Removing stains, mildew, etc.- See cleaning and maintenance instructions.

Insect repellents and suntan lotions- Not recommended. Insect repellents and suntan lotions can reduce the life of fabrics, accelerate fading and stain fabrics. To avoid damage, wipe clean with mild laundry detergent and warm water. DO NOT USE bleach or harsh detergents under any circumstances.

Special instructions- DO NOT USE STEAM. Acrylic fibers are made of 100% acrylic fiber and are thermoplastic or heat sensitive. When spot washing, use lukewarm water (under 100 ° F) Allow to air dry. DO NOT USE solvents, scouring agents, carbon tetrachloride, scouring agents, janitorial cleansers, gasoline or brushes.

CORPORATE HEADQUARTERS

3901 S. 20th Ave.

DFW AIRPORT, TX 75261

800.877.2290

retail2@woodard-furniture.com

woodard-furniture.com

My Lifestyle™
