

botanistTM

Socially responsible modern products

botanistTM

Socially responsible modern products



Botanist strives to tackle problems far beyond the challenges of traditional design dilemmas. Problems like cancer, education, AIDS, and the deterioration of the environment. It aims to do this through global collaboration, eco-manufacturing, and smart business.

Launched in 2008 by Orange22, Botanist products begin life as a blank-canvas made from recycled aluminum. Leveraging just-in-time manufacturing and hydro-jet technology these blank-canvas take on the unique vision of their collaborating designer. In true companionship, Orange22 matches each designers royalty to a social cause or charity of their choice. The end result is not only a fabulous looking line of modern products, but a ground breaking initiative, that empowers the design community to make a difference.

collaborate, create, and give back







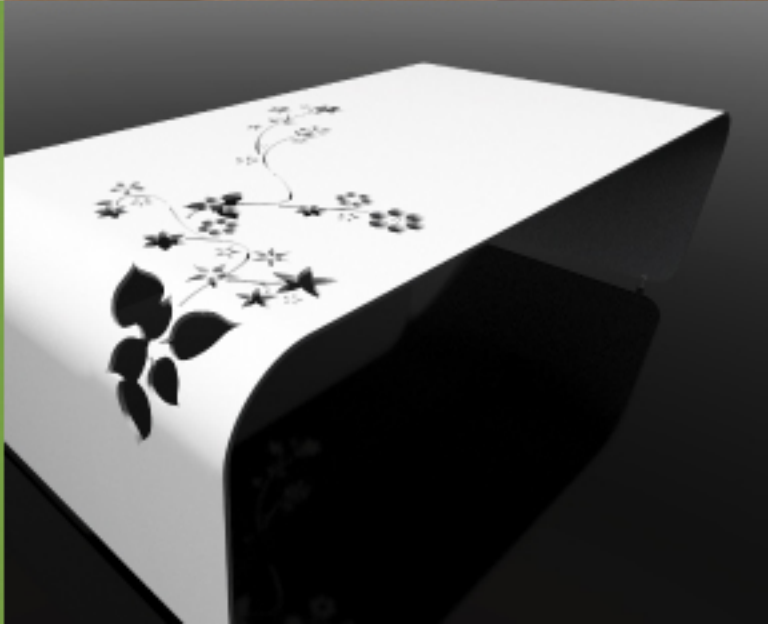










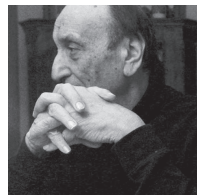




Yves Behar



Margo Chase



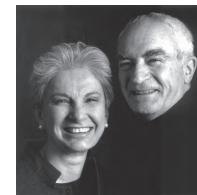
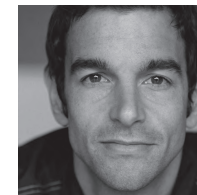
Milton Glaser



Kahi Lee



Karim Rashid

Joseph Ricchio
with Kara LarsenMassimo & Lella
Vignelli

Claude Zellweger



BOT-END-YB-BNM



BOT-END-MC-GRM



BOT-END-MG-CM2



BOT-END-KL-CHR



BOT-END-KR-AM1



BOT-END-JR-SFG



BOT-END-MV-SYW



BOT-END-CZ-BKM

end table
26 L x 20 D x 19 H in



BOT-CKT-YB-WTM



BOT-CKT-MC-ORM



BOT-CKT-MG-CM3



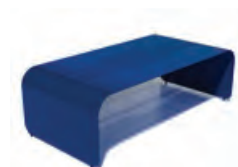
BOT-CKT-KL-CHR



BOT-CKT-KR-CM4



BOT-CKT-JR-SFG



BOT-CKT-MV-RYB



BOT-CKT-CZ-BKM

cocktail
50 L x 25 D x 16 H in



BOT-BEN-YB-BGM



BOT-BEN-MC-BNM



BOT-BEN-MG-PDG



BOT-BEN-KL-CHR



BOT-BEN-KR-AM7



BOT-BEN-JR-SFG



BOT-BEN-MV-POR



BOT-BEN-CZ-BKM

bench
60 L x 18 D x 18 H in

The Natural series is exactly what it claims to be. Composed of a solid wood core without a trace of aluminum, these benches are Mother Nature's way of combining organic material with modern design. The end result? Nothing short of stunning ... naturally.



natural series bench BOT_BEN_NAT_WALN

materials Walnut

designer Dario Antonioni

dimensions 60 L x 18 D x 18 H in



natural series bench BOT_BEN_NAT_RIFT

materials Rift Oak

designer Dario Antonioni

dimensions 60 L x 18 D x 18 H in



Yves Behar Pixel Burst

pixel burst **end**


BOT-END-YB-BNM

materials	Aluminum, Powder Coating
designers	Yves Behar
dimensions	26 L x 20 D x 19 H in

 earth brown
pixel burst **bench**

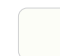
BOT-BEN-YB-BGM

materials	Aluminum, Powder Coating
designers	Yves Behar
dimensions	60 L x 18 D x 18 H in

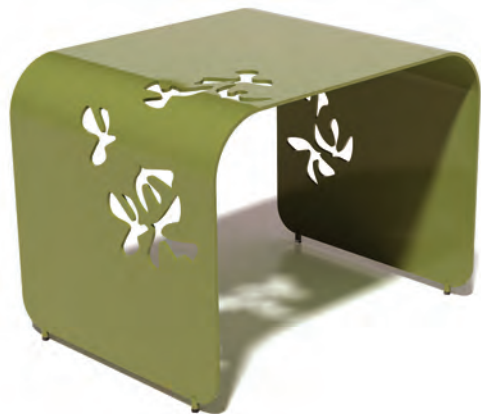
 mega beige
pixel burst **cocktail**

BOT-CKT-YB-WTM

materials	Aluminum, Powder Coating
designers	Yves Behar
dimensions	50 L x 25 D x 16 H in

 bright white


Margo Chase Flight



flight end

BOT-END-MC-GRM

materials	Aluminum, Powder Coating
-----------	--------------------------

designers	Margo Chase
-----------	-------------

dimensions	26 L x 20 D x 19 H in
------------	-----------------------



leaf green



flight bench

BOT-BEN-MC-BNM

materials	Aluminum, Powder Coating
-----------	--------------------------

designers	Margo Chase
-----------	-------------

dimensions	60 L x 18 D x 18 H in
------------	-----------------------



earth brown



flight cocktail

BOT-CKT-MC-ORM

materials	Aluminum, Powder Coating
-----------	--------------------------

designers	Margo Chase
-----------	-------------

dimensions	50 L x 25 D x 16 H in
------------	-----------------------



orange glow



Milton Glaser Epigram



epigram end

BOT-END-MG-CM2

materials	Aluminum, Powder Coating
designers	Milton Glaser
dimensions	26 L x 20 D x 19 H in



cream soda



epigram bench

BOT-BEN-MG-PDG

materials	Aluminum, Powder Coating
designers	Milton Glaser
dimensions	60 L x 18 D x 18 H in



gun grey



epigram cocktail

BOT-CKT-MG-CM3

materials	Aluminum, Powder Coating
designers	Milton Glaser
dimensions	50 L x 25 D x 16 H in



cream soda



Kahi Lee Unlock the Cure

unlock the cure **end**

BOT-END-KL-CHR

materials	Aluminum, Powder Coating
designers	Kahi Lee
dimensions	26 L x 20 D x 19 H in



key chrome

unlock the cure **bench**

BOT-BEN-KL-CHR

materials	Aluminum, Powder Coating
designers	Kahi Lee
dimensions	60 L x 18 D x 18 H in



key chrome

unlock the cure **cocktail**

BOT-CKT-KL-CHR

materials	Aluminum, Powder Coating
designers	Kahi Lee
dimensions	50 L x 25 D x 16 H in



key chrome



Karim Rashid Orikami



orikami end

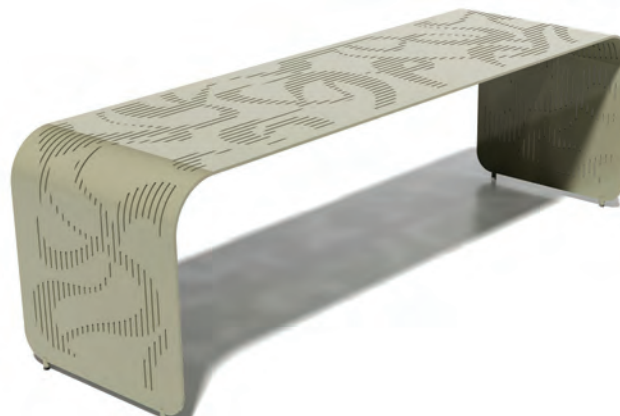
BOT-END-KR-AM1

materials	Aluminum, Powder Coating
-----------	--------------------------

designers	Karim Rashid
-----------	--------------

dimensions	26 L x 20 D x 19 H in
------------	-----------------------

digital white



orikami bench

BOT-BEN-KR-AM7

materials	Aluminum, Powder Coating
-----------	--------------------------

designers	Karim Rashid
-----------	--------------

dimensions	60 L x 18 D x 18 H in
------------	-----------------------

metallic



orikami cocktail

BOT-CKT-KR-CM4

materials	Aluminum, Powder Coating
-----------	--------------------------

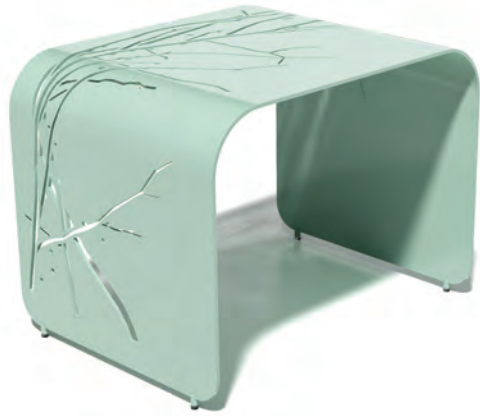
designers	Karim Rashid
-----------	--------------

dimensions	50 L x 25 D x 16 H in
------------	-----------------------

champagne



Joseph Ricchio with Kara Larsen Albero



albero end

BOT-END-JR-SFG

materials	Aluminum, Powder Coating
designers	Joseph Ricchio with Kara Larsen
dimensions	26 L x 20 D x 19 H in

 inspiration green


albero bench

BOT-BEN-JR-SFG

materials	Aluminum, Powder Coating
designers	Joseph Ricchio with Kara Larsen
dimensions	60 L x 18 D x 18 H in

 inspiration green

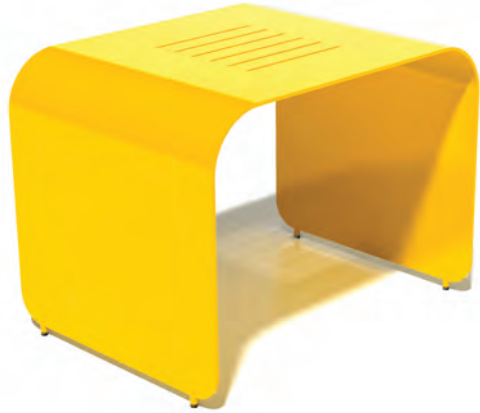

albero cocktail

BOT-CKT-JR-SFG

materials	Aluminum, Powder Coating
designers	Joseph Ricchio with Kara Larsen
dimensions	50 L x 25 D x 16 H in

 inspiration green


Massimo & Lella Vignelli Lines

lines **end**

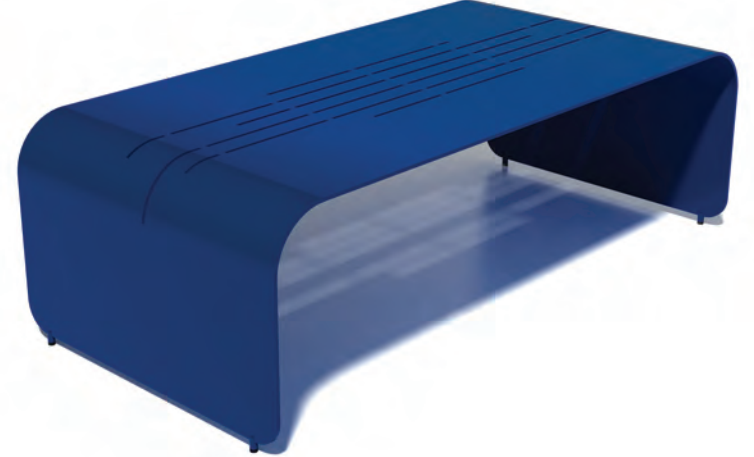
BOT-END-MV-SYW

materials	Aluminum, Powder Coating
designers	Massimo & Lella Vignelli
dimensions	26 L x 20 D x 19 H in

 yellow right
lines **bench**

BOT-BEN-MV-POR

materials	Aluminum, Powder Coating
designers	Massimo & Lella Vignelli
dimensions	60 L x 18 D x 18 H in

 orange left
lines **cocktail**

BOT-CKT-MV-RYB

materials	Aluminum, Powder Coating
designers	Massimo & Lella Vignelli
dimensions	50 L x 25 D x 16 H in

 blue center



Claude Zellweger no ornamentation



no ornamentation end

BOT-END-CZ-BKM

materials	Aluminum, Powder Coating
designers	Claude Zellweger
dimensions	26 L x 20 D x 19 H in

 just black


no ornamentation bench

BOT-BEN-CZ-BKM


materials	Aluminum, Powder Coating
designers	Claude Zellweger
dimensions	60 L x 18 D x 18 H in

 just black


no ornamentation cocktail

BOT-CKT-CZ-BKM

materials	Aluminum, Powder Coating
designers	Claude Zellweger
dimensions	50 L x 25 D x 16 H in

 just black


indoor/outdoor powder coat
floral graphic cut-out

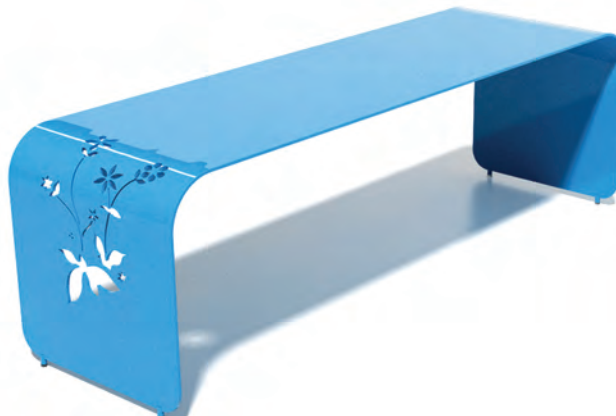
The Flora series utilizes computer controlled precision water jet cutting technology and finally a durable power coating is applied. Just like Flow, Flora feels at home indoors and out.

Flora Series



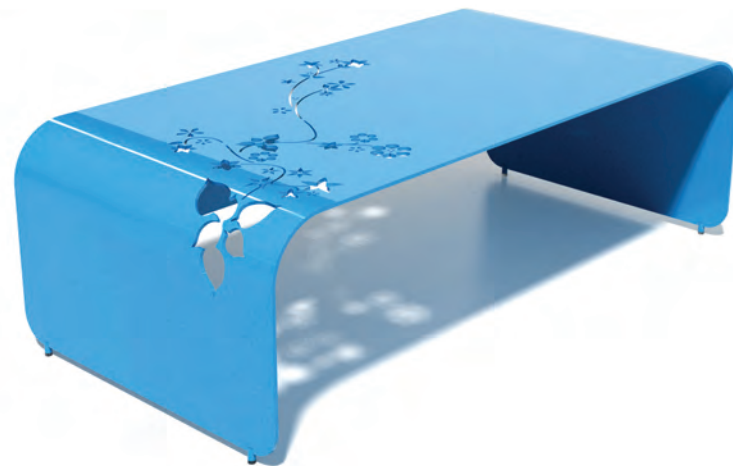
flora series **end**

materials	Aluminum, Powder Coating
designers	Dario Antonioni Brandon Lynne
dimensions	26 L x 20 D x 19 H



flora series **bench**

materials	Aluminum, Powder Coating
designers	Dario Antonioni Brandon Lynne
dimensions	60 L x 18 D x 18 H in



flora series **cocktail**

materials	Aluminum, Powder Coating
designers	Dario Antonioni Brandon Lynne
dimensions	50 L x 25 D x 16 H in



iconic form
indoor/outdoor powder coat

The Flow series starts with a minimalist aluminum form followed by an oven baked powder coat that is highly durable and UV stable. Flow feels at home indoors and out.

Flow Series



flow series **end**

materials	Aluminum, Powder Coating
designers	Dario Antonioni Brandon Lynne
dimensions	26 L x 20 D x 19 H in



flow series **bench**

materials	Aluminum, Powder Coating
designers	Dario Antonioni Brandon Lynne
dimensions	60 L x 18 D x 18 H in



flow series **cocktail**

materials	Aluminum, Powder Coating
designers	Dario Antonioni Brandon Lynne
dimensions	50 L x 25 D x 16 H in





happy indoors and out

The Flow, Flora, and Designer series are ready for outdoor use; they employ an industrial grade powder coating on the aluminum structure, which naturally resists corrosion. The optional bench pad is made from marine grade vinyl and can withstand the sun and rain with ease



nesting end tables

Our end tables are made to nest over the cocktail table, combining to create a layered look that highlights the complimentary surfaces and materials. A small storage area is created that can be used to conceal magazines, remotes, and incidentals.



mix & match

Having a hard time choosing which finish is best for you? No problem. Mix and match different materials and colors to create a set that is perfect for your environment. For the designer series, you can mix an end table from one designer, with the cocktail table of another.



modern environment

Need a perfect place for your entertainment in mind? The bench can be used to hold your Plasma TV and audio/visual equipment without the bulk to accommodate older technology. The structural brace has holes that can be used for cable management to keep pesky wires off the floor.



sleek and subtle

The sleek forms and intricate details of the botanist series communicate a sophistication of design and space. At home in a modern setting, as well as in the outdoors, the botanist pieces elevate the character of their surroundings.



contract ready

Botanist pieces feature the durability, quality, and style that you expect from contract grade furniture.



tough powder coat

Our powder coating is tougher than any paint. The process applies plastic resin particles to each piece, which is then baked in an oven, creating a durable layer of plastic on the surface. The colors are UV and weather resistant intended to be used outdoors. It's the toughest stuff that we could find, and we think it looks great too.



want to try your own graphic?

We are happy to apply your designs, including logos, patterns, and type, to our Botanist pieces. We can work with your designers to develop a product that fits your project. (Minimum order and setup fees apply).



want a custom color?

We use the TIGER Drylac® Series 38 coating system, and can create custom Botanist pieces using any of their available colors. Contact us to receive a color specification chart (Minimum order and setup fees apply)



add on security feet

Want to use these pieces in a public space? Our available surface mount security feet securely anchor these to the ground.



add on bench pad

Worried about a hot seat outdoors? Our available bench pads are not only soft enough to keep you comfortable, but they also are made to stand up to the weather. We offer them in marine grade vinyl, or in a durable Sunbrella Material, all made to withstand the rigors of outdoor use.



worried about water & rust?

Don't be. All Botanist pieces are made from aluminum alloy that is highly corrosion resistant and powder-coated for extreme durability. They are happy to live in a damp environment and look great in a garden or around the pool.

materials	Marine grade vinyl Sunbrella
dimensions	44 x 18 x 1 in



naturally beautiful

The Botanist Natural series is available in a wide range of woods, from dramatic ebony to the lightest maple. The engineered, eco-friendly veneer gives the character and warmth of wood in an impossibly thin form.



our veneers

We use engineered veneers which are grown in a controlled poplar forest and dyed to look like exotics. The finished veneer is still real wood but this process keeps the exotics in the forest where they belong.



powder-coating

TIGER Drylac® Powder Coatings are solvent-free and comprised of various synthetic resins, pigments and special additives for a high quality surface finish. Economic and ecological powder coatings represent the future of paint technology.



our factory

Our 215,000 square foot facility and distribution center is located in Santa Ana, CA. The 17,000 sf state-of-the-art coating facility has been in operation for over 32 years and is completely self contained and ISO 9002 certified.



impossibly thin

The thin profile cleverly conceals the true strength and durability of each Botanist piece.



water-jet

Water is expelled from a small nozzle at a high velocity to create intricate designs in the aluminum. There is no heat involved in the process so the material maintains its integrity.



worried about strength?

Each piece is formed from a quarter-inch aluminum alloy sheet, making it durable, yet lighter than you might expect. In addition, the cocktail table and bench are reinforced further with a structural brace that is welded in place. Even the cocktail table can be used as occasional seating during an outdoor soiree or a loft party.



our boxes

Our cardboard is a blend of 40% to 80% recycled materials. Additionally we designed our boxes to ensure damage-free delivery and ease of handling by including cutout handholds.

applications

Airports	Mud Rooms
Athletic Environments	Museums & Galleries
Bar & Restaurants	Nightclub
Bathrooms	Nurseries
Beath Houses	Outdoor Landscaping
Casinos	Parks
Civic Spaces	Playrooms
Commercial Use	Pool Side Areas
Corporate Lobbies	Public Indoor and Outdoor Spaces
Cruise Liners	Reception Areas
Education	Residential
Entry Halls	Retail Environments
Events	Schools
Gardens	Spas
Gymnasiums	Studies
Hospitality	Train Stations
Institutional	TV Rooms
Lecture Halls	Waiting Rooms
Libraries	Waterfronts
Living Rooms	Weddings & Receptions
Malls	Yachts
Medical Environments	...did we miss anything?